



Rosecroft, Whitechapel Street, Didsbury

Offers In Region Of £269,950

🛏️ 2 🚿 2 🚗 1

- Ground Floor Apartment
- No Onward Vendor Chain
- Ideal Investment Opportunity or First Time Buy
- Two Bedrooms
- Master Bedroom with En Suite
- Central Didsbury Village Location
- Allocated Undercroft Parking
- Stylish Kitchen
- Three Piece Bathroom
- Council Tax Band - D / EPC - C / Tenure - Leasehold

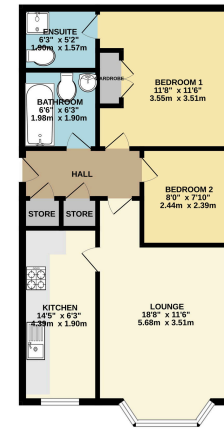


VIDEO TOUR AVAILABLE - OFFERED FOR SALE WITH NO CHAIN, A stylish TWO BEDROOM APARTMENT, occupying a GROUND FLOOR POSITION within this contemporary development within the HEART OF FASHIONABLE DIDSBURY VILLAGE. The accommodation comprises of an entrance hallway with storage and intercom, an open plan lounge/diner with bay window, modern kitchen with integrated appliances and two excellent bedroom served by an en suite shower room and three piece bathroom suite. Externally, there is allocated off road parking for one vehicle with additional visitor parking.

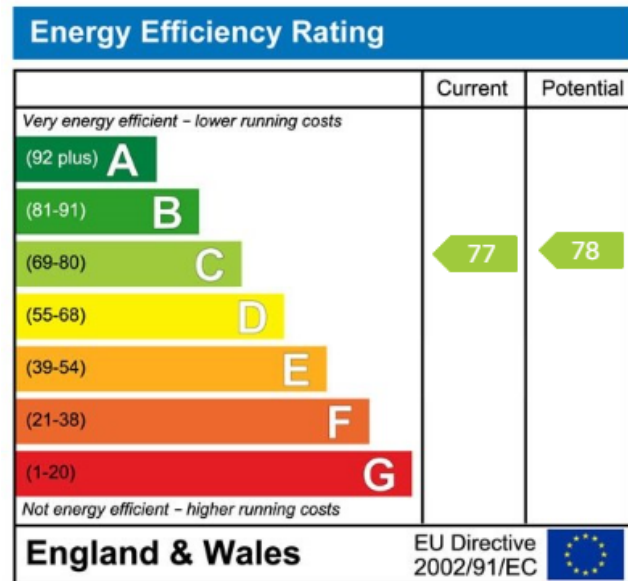




GROUND FLOOR
581 sq.ft. (54.9 sq.m.) approx.



TOTAL FLOOR AREA: 581 sq.ft. (54.9 sq.m.) approx.
 While every effort has been made to ensure the accuracy of the floorplan contained herein, responsibility for errors, omissions and/or inaccuracies remains with the advertiser. The advertiser warrants that the floorplan is a true and correct representation of the property. The advertiser warrants that the floorplan is a true and correct representation of the property. The advertiser warrants that the floorplan is a true and correct representation of the property.



9 Gatley Road, Cheadle, Cheshire SK8 1LY Tel. 0161 428 1488 Fax. 0161 428 1479
 Email. mail@andrewdawson.co.uk