



## Laurieston Court, 33 Chadvil Road, Cheadle

Offers Over £170,000

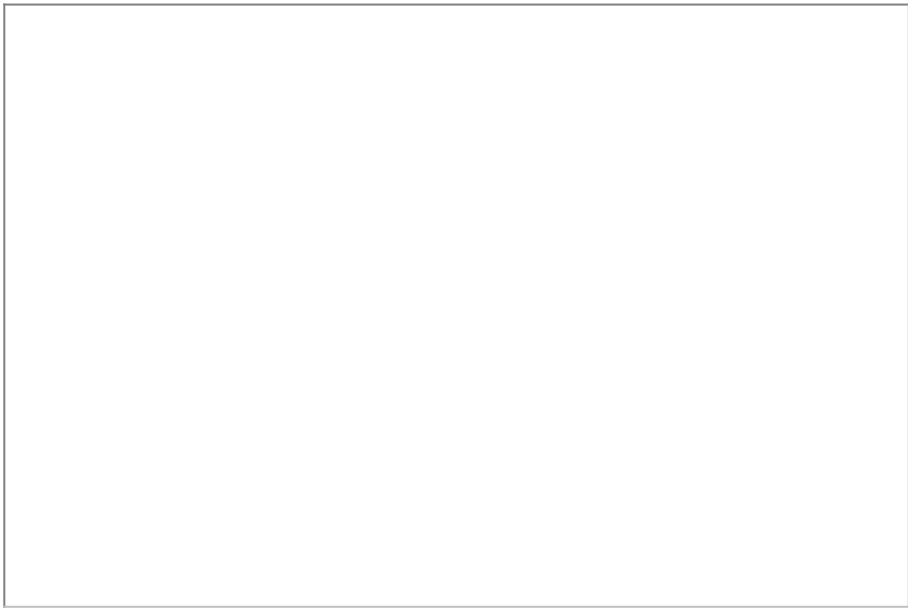
🛏️ 2 🚿 1 🚗 1

- Excellent ground floor apartment
- Walking distance to Cheadle Village
- Superb access to motorway network and Gatley railway station
- Bathroom with shower facility
- Lovely communal gardens
- Two Bedrooms
- Off road parking
- Fitted kitchen with integrated appliances
- Electric heating and double glazing throughout
- Ideal opportunity to get on the property ladder or as a buy to let investment

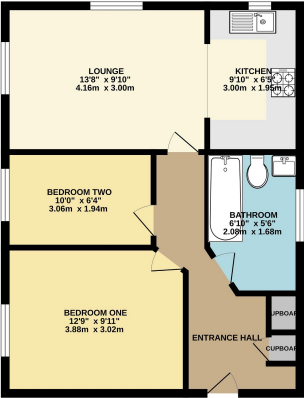


An excellent 2 bed ground floor apartment situated in popular location close to Cheadle Village with good access to motorway network and Gatley railway station. In brief the accommodation comprises hall, lounge, fitted kitchen with integrated appliances, two bedrooms, and bathroom with overbath shower. Outside the property stands in attractive communal gardens, with allocated parking space.





GROUND FLOOR



We warrant that the information provided in this document is true and correct to the best of our knowledge and belief at the time of preparation. The information is provided for your information only and does not constitute an offer of any financial product. The information is provided on an "as is" basis and we do not warrant its accuracy or completeness.

