



Andrew J.
Dawson
Independent Estate Agents

Jesmond Grove, Cheadle Hulme

Guide Price £525,000

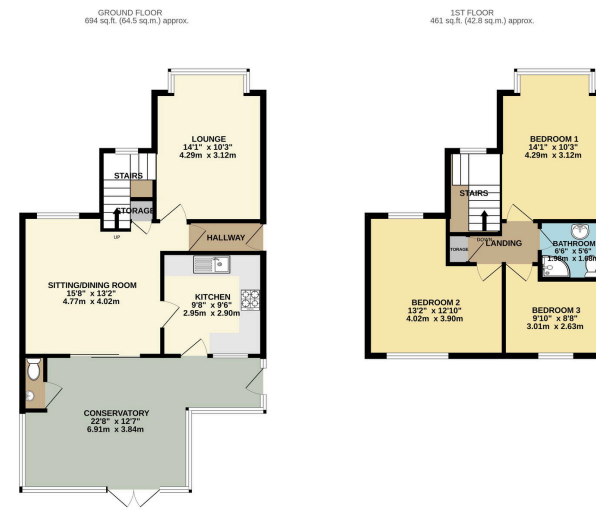
3 1 2

- A truly individual home of great character
- Two reception rooms plus superb sun room
- Large garden store/workshop
- Convenient residential position.
- Council tax- D
- Delightful gardens
- 3 Bedrooms
- Ample off road parking
- Freehold
- EPC- TBA



Standing in delightful gardens we are pleased to offer for sale this individual home, exuding a rare atmosphere of great charm and character. The property is approached via a large driveway leading to a carport with lovely rear gardens beyond. The accommodation in brief features , entrance hall, Lounge, dining room, fitted kitchen, impressive sun room, ground floor wc, 3 bedrooms and shower room with wc. Outside there is a BBQ area, green house and large garden store/workshop. A truly individual home well worth an early viewing .





Energy Efficiency Rating

	Current	Potential
Very energy efficient - lower running costs		
(92 plus) A		
(81-91) B		
(69-80) C		74
(55-68) D	55	
(39-54) E		
(21-38) F		
(1-20) G		
Not energy efficient - higher running costs		
England & Wales	EU Directive 2002/91/EC	

9 Gatley Road, Cheadle, Cheshire SK8 1LY Tel. 0161 428 1488 Fax. 0161 428 1479
 Email. mail@andrewdawson.co.uk