



Daylesford Crescent, Cheadle, SK8 1LH

Offers Over £450,000

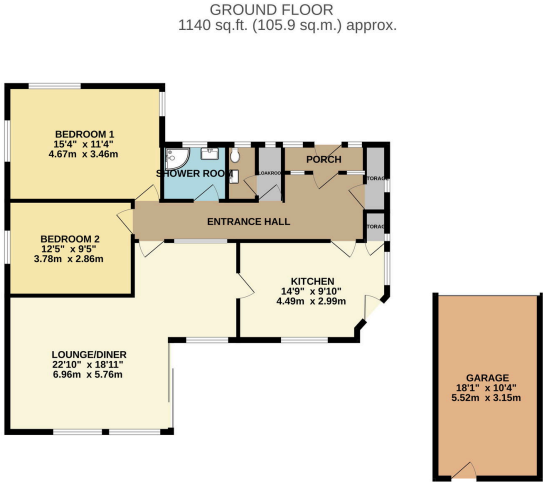
2 1 1

- Detached Bungalow
- Two Double Bedrooms
- No Onward Vendor Chain
- Beautiful Gardens
- EPC - D
- Popular Cheadle Enclave
- Open Plan Living / Dining Room
- Off Road Parking and Garage
- Council Tax Band - E
- Tenure - Freehold (Restrictive Covenants Apply)



OFFERED FOR SALE WITH NO CHAIN, this excellent DETACHED BUNGALOW situated on the EVER POPULAR DAYLESFORD CRESCENT, situated within a SHORT STROLL OF BRUNTWOOD PARK AND CHEADLE VILLAGE. The accommodation comprises an entrance porch, hallway with cloaks storage, a large lounge/ dining room with dual aspect, a fitted kitchen with storage and two double bedrooms served by a shower room and a separate W.C. Externally, the property occupies a large plot with a well-established frontage and driveway leading to a garage and garden store. To the rear a great rear garden with patio area, established lawn with borders.





TOTAL FLOOR AREA: 1140 sq.ft. (105.9 sq.m.) approx.
While every effort has been made to ensure the accuracy of the floorplan, the floorplan is not intended to be used as a substitute for a professional survey. The floorplan is not intended to be used as a substitute for a professional survey. The floorplan is not intended to be used as a substitute for a professional survey. The floorplan is not intended to be used as a substitute for a professional survey.

