



Heathfield Avenue, Gatley

Offers In Region Of £395,000

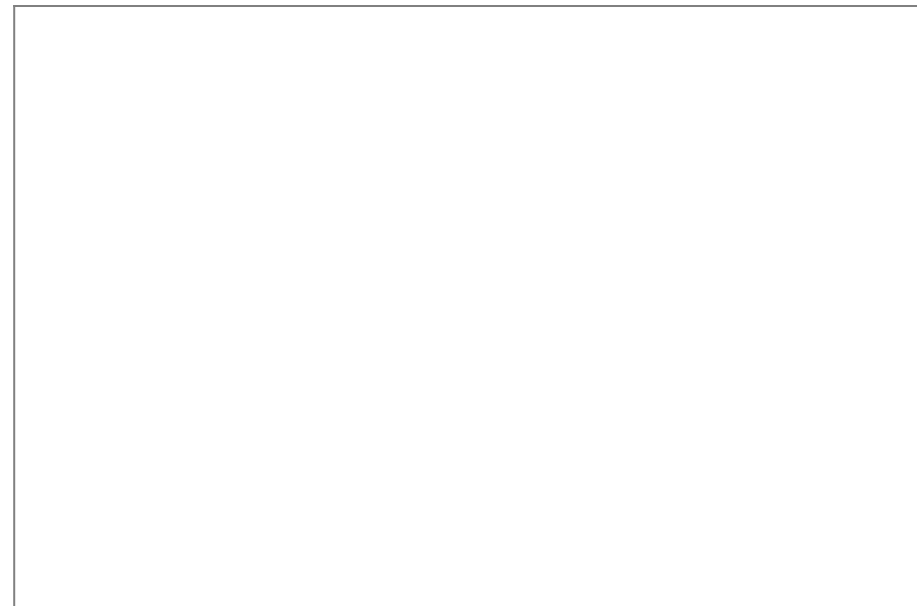
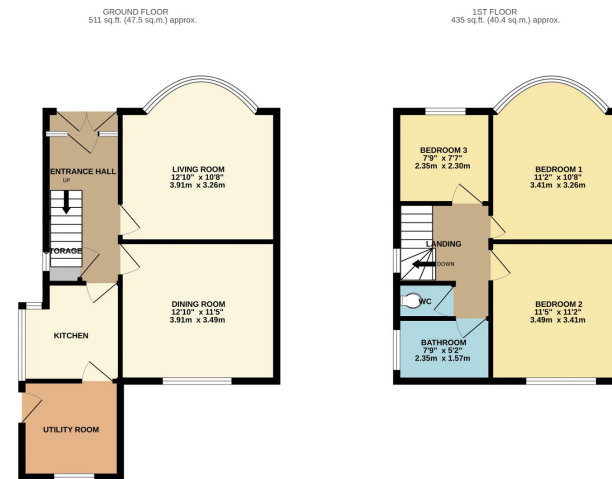
3 1 2

- Semi Detached Home.
- Excellent Landscaped Garden.
- Fitted Kitchen with Pantry/ Utility Room.
- Central Gatley Location.
- Garage.
- Three Bedrooms.
- Two Reception Rooms.
- Off Road Parking.
- Potential to Extend Subject to Planning.
- Viewing by Appointment Only.



A WELL PRESENTED SEMI DETACHED family home situated within a POPULAR ENCLAVE OF GATLEY VILLAGE and boasting a SUPERB SOUTH FACING REAR GARDEN. The accommodation comprises of an entrance hallway, living room with bay window, dining room with patio doors and a fitted kitchen with pantry. The first floor reveals three bedrooms served by a modern bathroom with separate W.C. Externally, there is ample off road parking leading to a garage and a delightful south facing rear garden.





9 Gatley Road, Cheadle, Cheshire SK8 1LY Tel. 0161 428 1488 Fax. 0161 428 1479
Email. mail@andrewdawson.co.uk