



Eskdale, Gatley

Guide Price £350,000

🛏 3 🚗 1 🚗 1

- Stylish Semi Detached
- Spacious Lounge
- Decked Sun Terrace
- Car Port
- Popular Quiet Cul De Sac
- Three Bedrooms
- Superb Dining Kitchen with Patio Doors
- Landscaped Rear Garden
- Driveway with Off Road Parking
- Superb Finish Throughout

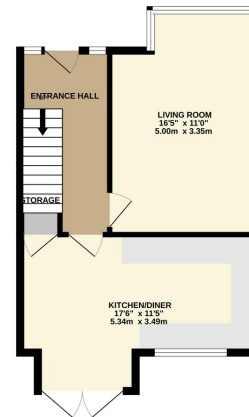


A stylishly presented SEMI DETACHED FAMILY HOME, situated on a popular QUIET CUL DE SAC, located within EASY REACH OF GATLEY AND HEALD GREEN VILLAGES. The accommodation comprises of a welcoming entrance hallway, spacious lounge with bay window opening though to a wonderful kitchen diner with double glazed patio doors and understairs storage. The first floor reveals three well proportioned bedrooms served by a four piece family bathroom suite. Externally, there is a large driveway leading to a car port and an excellent rear garden with decked terrace area and large lawn.

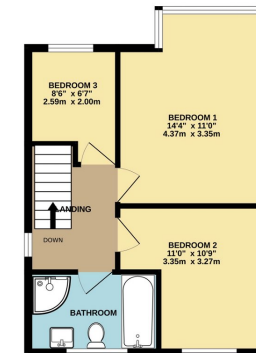




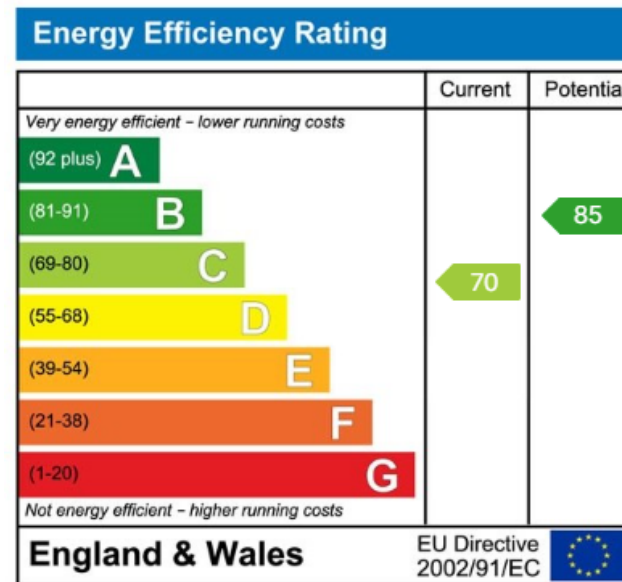
GROUND FLOOR
433 sq.ft. (40.0 sq.m.) approx.



1ST FLOOR
413 sq.ft. (38.3 sq.m.) approx.



TOTAL FLOOR AREA: 844 sq.ft. (78.4 sq.m.) approx.
Whilst every effort has been made to ensure the accuracy of the floorplan contained herein, measurements of doors, windows, rooms and any other items are approximate and no responsibility is taken for any error, omission or misstatement. This plan is for illustrative purposes only and should be used as a guide for any prospective purchaser. The services, fixtures and fittings shown hereon are not guaranteed and no guarantee as to their operability or efficiency can be given.
Made with Metreplan ©2004



9 Gatley Road, Cheadle, Cheshire SK8 1LY Tel. 0161 428 1488 Fax. 0161 428 1479
Email. mail@andrewdawson.co.uk