



5 Torkington Road, Gatley

£525,000

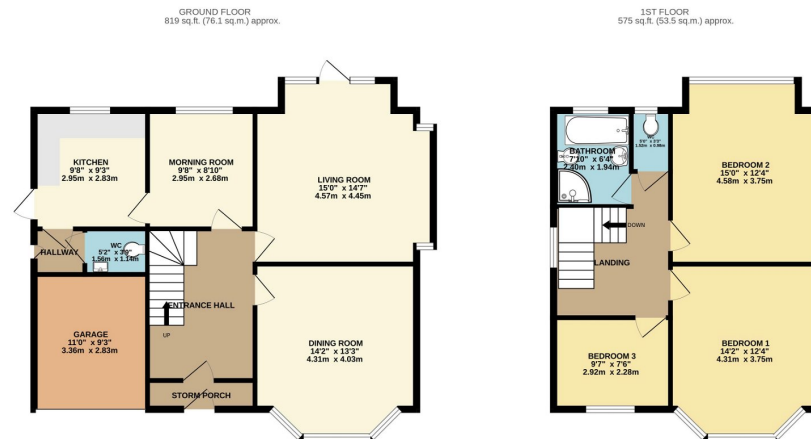
 3  1  2

- TRADITIONAL DETACHED HOME.
- RETAINING A HOST OF IT'S ORIGINAL CHARM AND CHARACTER.
- WONDERFUL LOUNGE WITH INGLENOOK FIREPLACE.
- GROUND FLOOR W.C.
- EXCELLENT REAR SUN TERRACE.
- THREE BEDROOMS.
- BAY FRONTED DINING ROOM.
- MORNING ROOM OPENING TO KITCHEN.
- LANDSCAPED REAR GARDEN.
- VIEWING BY APPOINTMENT ONLY.

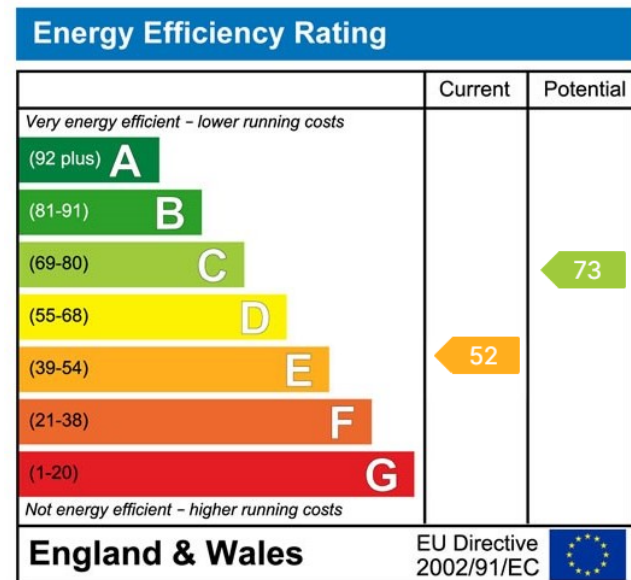


A beautiful THREE BEDROOM TRADITIONAL DETACHED HOME, retaining a host of it ORIGINAL CHARACTER & CHARM situated on a popular leafy tree lined road WITHIN THE HEART OF GATLEY VILLAGE. The accommodation comprises of a storm porch, entrance hallway, dining room with bay window, lounge with inglenook fireplace, morning room opening to the kitchen, ground floor W.C and Integral Garage. The first floor accommodation comprises of three bedrooms a stylishly presented bathroom with separate W.C. Externally, there is off road parking with a delightful rear garden with sun terrace.





TOTAL FLOOR AREA: 1395 sq ft. (129.6 sq m.) approx.
 While every attempt has been made to ensure the accuracy of the floorplan contained here, measurements of doors, windows, rooms and any other items are approximate and no responsibility is taken for any error, omission or mis-statement. This plan is for illustrative purposes only and should be used as such by any prospective purchaser. The services, systems and appliances shown have not been tested and no guarantee as to their operability or efficiency can be given.
 Made with Metropix ©2024



9 Gatley Road, Cheadle, Cheshire SK8 1LY Tel. 0161 428 1488 Fax. 0161 428 1479
 Email. mail@andrewdawson.co.uk