



Daylesford Road, Cheadle

Guide Price £900,000

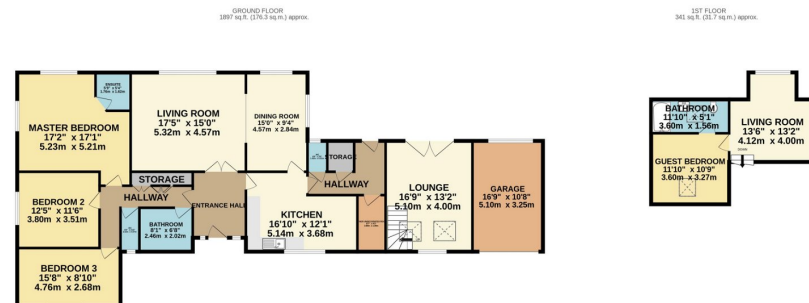
🛏️ 4 🚗 3 🛋️ 3

- Detached Bungalow.
- Large Family Bathroom & Two En suite's.
- Openplan Principle Reception Room.
- Two Decked Terrace Area.
- Cheadle Village and Bruntwood Park within a Short Walk.
- Four Bedooms.
- Extenside Off Road Parking with Integral Garage.
- Extensive Storage and Utility Room.
- Highly Sought After Daylesford Road.
- Offered for Sale with No Onward Chain.



A large DETACHED BUNGALOW offered for sale with NO ONWARD VENDOR CHAIN, situated on the highly desired DAYLESFORD ROAD within easy reach of CHEADLE VILLAGE AND BRUNTWOOD PARK. The accommodation comprises of an entrance hallway, a spacious open lounge / diner, breakfast kitchen opening through to a utility, W.C walk in storage and a further large lounge with vaulted ceiling, mezzanine level with a double bedroom and en suite shower room. There are three further double bedrooms served by a further en suite shower room and family bathroom with separate W.C. Externally, there is extensive off road parking behind double gates and leads to the integral garage. To the side and rear is a generous garden with two decked terrace area providing a fantastic outdoor entertaining space.

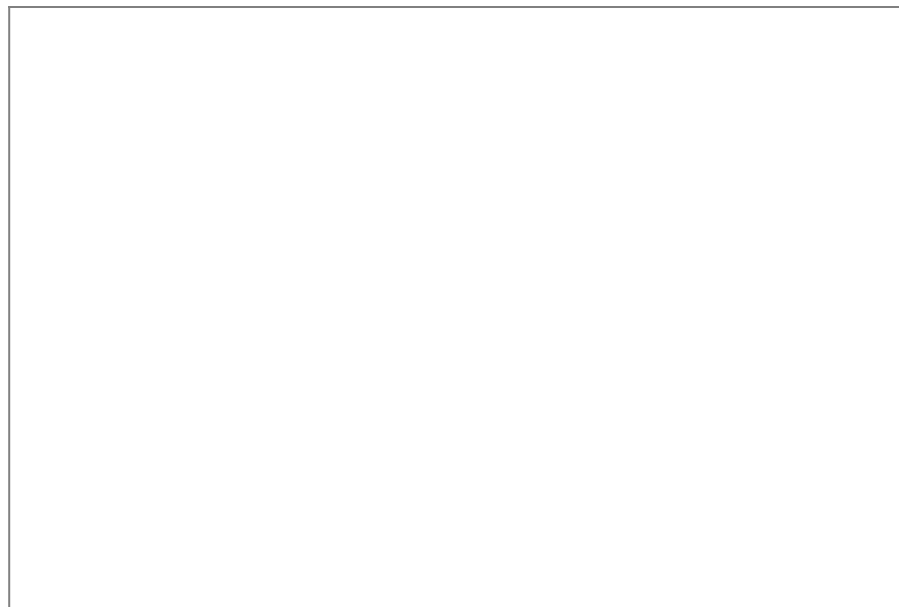




TOTAL FLOOR AREA: 2238 sq. ft. (208.0 sq.m.) approx.

Whilst every attempt has been made to ensure the accuracy of the floorplan contained here, measurements of blocks, windows, rooms and any other items are approximate and no responsibility is taken for any error, omission or mis-statement. This plan is for illustrative purposes only and should be used as such by any prospective purchaser. The services, systems and appliances shown have not been tested and no guarantee as to their operability or efficiency can be given.

Made with hertape ©2021



9 Gatley Road, Cheadle, Cheshire SK8 1LY Tel. 0161 428 1488 Fax. 0161 428 1479
 Email. mail@andrewdawson.co.uk