



## Turnfield Road, Cheadle

Guide Price £520,000

🛏 4 🚿 3 🛋 3

- Impressive Detached Family Home
- En Suite Shower Room to Master
- Ground Floor Shower Room
- Substantial Off Road Parking Space
- Stylish & Spacious Kitchen
- Four Bedrooms
- Extended Lounge
- Superb Well Connected Cheadle Location
- Excellent Presentation & Finish Throughout
- Tiered Landscaped Rear Garden to the Rear.

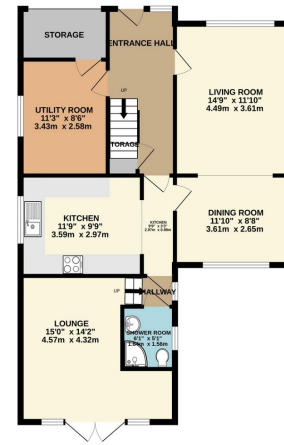


A most impressive DETACHED FAMILY HOME, with an exceptional REAR GROUND FLOOR EXTENSION, situated within a popular WELL CONNECTED ENCLAVE WITHIN CHEADLE VILLAGE. The accommodation comprises of an entrance hallway, large living room with wood burner opening through to the rear dining room, there is a well fitted kitchen and opens through to the large rear extensions comprising a shower room and large lounge with patio doors, utility room/partially converted garage, four bedrooms, family bathroom, en suite shower room and a separate W.C. Externally, there is off road parking and to the rear a tiered landscaped rear garden.

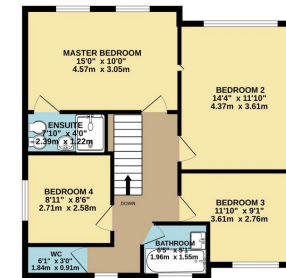




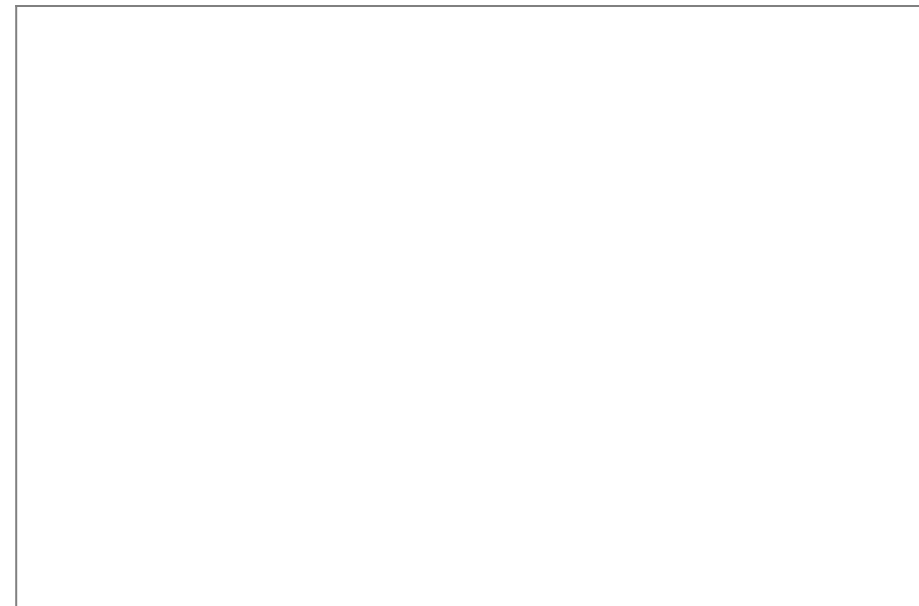
GROUND FLOOR  
878 sq.ft. (81.6 sq.m.) approx.



1ST FLOOR  
669 sq.ft. (62.1 sq.m.) approx.



TOTAL FLOOR AREA: 1547 sq.ft. (143.7 sq.m.) approx.  
 Whilst every attempt has been made to ensure the accuracy of the figures contained herein, measurements of doors, windows, rooms and any other items are approximate and no responsibility is taken for any error, omission or misstatement. This plan is for illustrative purposes only and should be used as a guide for any prospective purchaser. The services, fixtures and fittings are shown here for illustrative and not guaranteed as to their operability or efficiency can be given.  
 Made with Metaphor CDS



9 Gatley Road, Cheadle, Cheshire SK8 1LY Tel. 0161 428 1488 Fax. 0161 428 1479  
 Email. [mail@andrewdawson.co.uk](mailto:mail@andrewdawson.co.uk)