



*Andrew J.*  
**Dawson**  
Independent Estate Agents

## Birchfield Road, Stockport, SK3 0SY

Guide Price £260,000

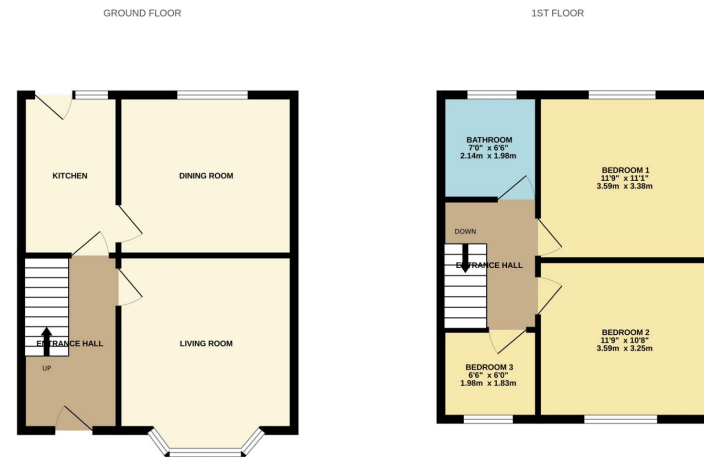
3 1 2

- Bay fronted semi
- Great scope and potential
- Lovely gardens
- Garage
- Gas central heating
- Double glazed windows
- 3 bedrooms
- Lounge and dining room
- Viewing a must!

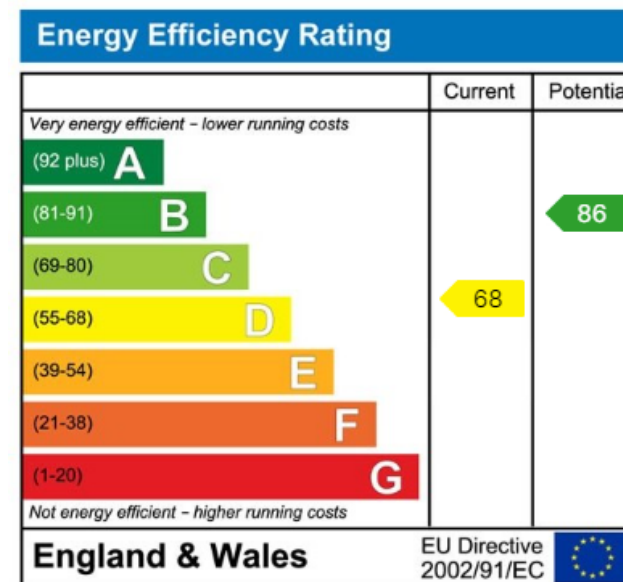


Fantastic opportunity! An attractive bay fronted, 3 bed semi standing in lovely gardens with off road parking and garage to the rear. The gas centrally heated accommodation is in need of some cosmetic improvement but offers great potential. Viewing a must!





Whilst every attempt has been made to ensure the accuracy of the floorplan contained here, measurements of doors, windows, stairs and any other areas are approximate and no responsibility is taken for any error, omission or mis-statement. This plan is for illustrative purposes only and should be used as such by any prospective purchaser. The services, systems and appliances shown have not been tested and no guarantee as to their operability or efficiency can be given.  
Made with Metron 2024



9 Gatley Road, Cheadle, Cheshire SK8 1LY Tel. 0161 428 1488 Fax. 0161 428 1479  
Email. [mail@andrewdawson.co.uk](mailto:mail@andrewdawson.co.uk)