





Tudor Drive

Kingston Upon Thames, Kingston Upon Thames

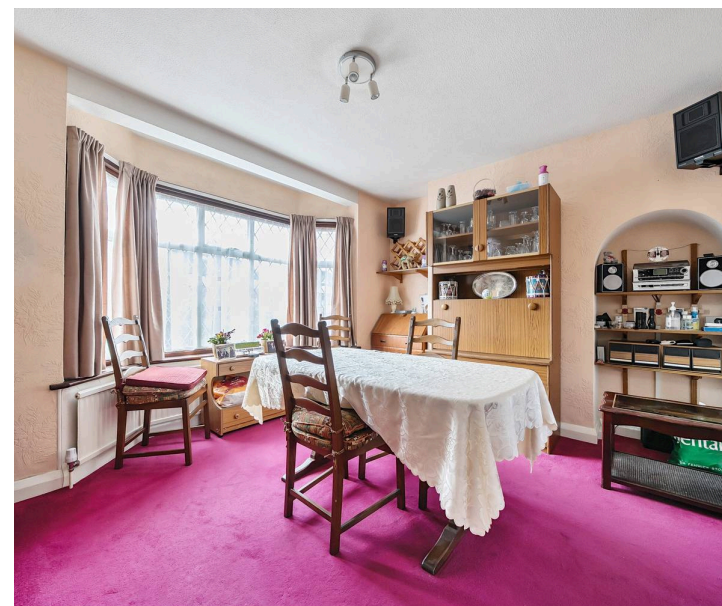
Charming 3-bed 1930s semi in N. Kingston with large driveway, garage & generous garden. Spacious living with character, ideal for a family. Council Tax band: E

Tenure: Freehold

EPC Energy Efficiency Rating: D

EPC Environmental Impact Rating:

- 3-Bedroom 1930s Semi-Detached House with character features
- Large private driveway with off-street parking for multiple vehicles
- Within easy reach of popular schools, including Latchmere, St Agatha's, St Paul's, and Alexandra
- Close to Richmond Park, Ham Lands, and local green spaces
- Moments from bus routes to Norbiton, Kingston, and Richmond, with local shops, a Post Office, and a library nearby



Tudor Drive, Kingston Upon Thames, KT2

Approximate Area = 926 sq ft / 86 sq m

Garage = 146 sq ft / 13.5 sq m

Total = 1072 sq ft / 99.5 sq m

For identification only - Not to scale

