



6 Locksmeade Road, Richmond

Offers Over **£425,000**

6 Locksmeade Road

Richmond, Richmond

NEW! Rarely Available One Bedroom Semi Detached Freehold House with its own private garden and parking space! Quietly located near Ham Riverside Lands. VACANT/NO CHAIN.
Council Tax band: C

Tenure: Freehold

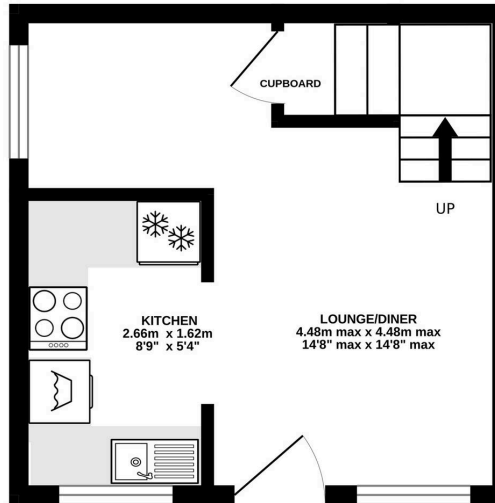
EPC Energy Efficiency Rating: D

EPC Environmental Impact Rating: D

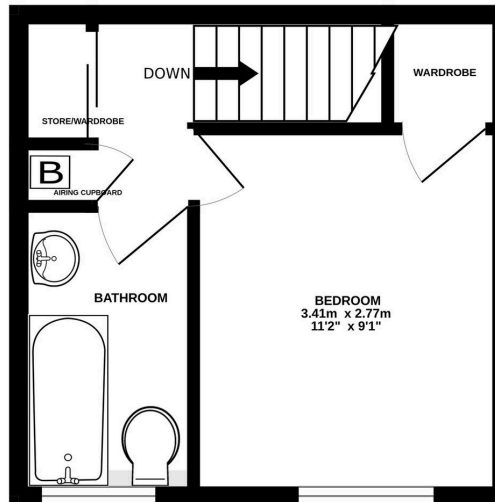




GROUND FLOOR
20.0 sq.m. (216 sq.ft.) approx.



1ST FLOOR
20.0 sq.m. (216 sq.ft.) approx.



TOTAL FLOOR AREA : 40.1 sq.m. (431 sq.ft.) approx.

Whilst every attempt has been made to ensure the accuracy of the floorplan contained here, measurements of doors, windows, rooms and any other items are approximate and no responsibility is taken for any error, omission or mis-statement. This plan is for illustrative purposes only and should be used as such by any prospective purchaser. The services, systems and appliances shown have not been tested and no guarantee as to their operability or efficiency can be given.

6 Locksmeade Road

Richmond, Richmond

- NEW! Rarely Available One Bedroom Semi Detached Freehold House with its own private garden and parking space! Quietly located near Ham Riverside Lands. VACANT/NO CHAIN!
- Quietly located on a small private development to the side of the protected open spaces of Ham Riverside Lands.
- L shaped double aspect lounge/diner and separate kitchen : 1st floor double bedroom and bathroom : Useful loft storage.
- Gas central heating system with a condensing combi boiler : Double glazed windows.
- The private garden is secluded by high fencing and includes a storage shed.
- Parking space to the right front of the property.
- Within close reach of the Thames towpath, riverside walks, and the pedestrian and cycle bridge over the river at Teddington Lock.
- Near of a choice of schools, shops and buses into central Richmond and Kingston.

Quietly located on a small private development to the side of the protected open space of Ham Riverside Lands. The property is within close reach of the Thames towpath, riverside walks, and the pedestrian and cycle bridge over the river at Teddington Lock. Near of a choice of schools, shops and buses into central Richmond and Kingston.

