



Ashburnham Road, Richmond

£780,000



# Ashburnham Road

Richmond, Richmond

Sought after 'Chalet' style 3 DOUBLE BEDROOM 2 RECEPTION HOUSE OVER 1100 SQ FT with garage and sunny SW garden. Grd fl WC, lounge and dining areas with parquet floor, kitchen/breakfast + utility area, super 18 ft master bedroom + 2 other doubles.

NO CHAIN!

Council Tax band: E

Tenure: Freehold







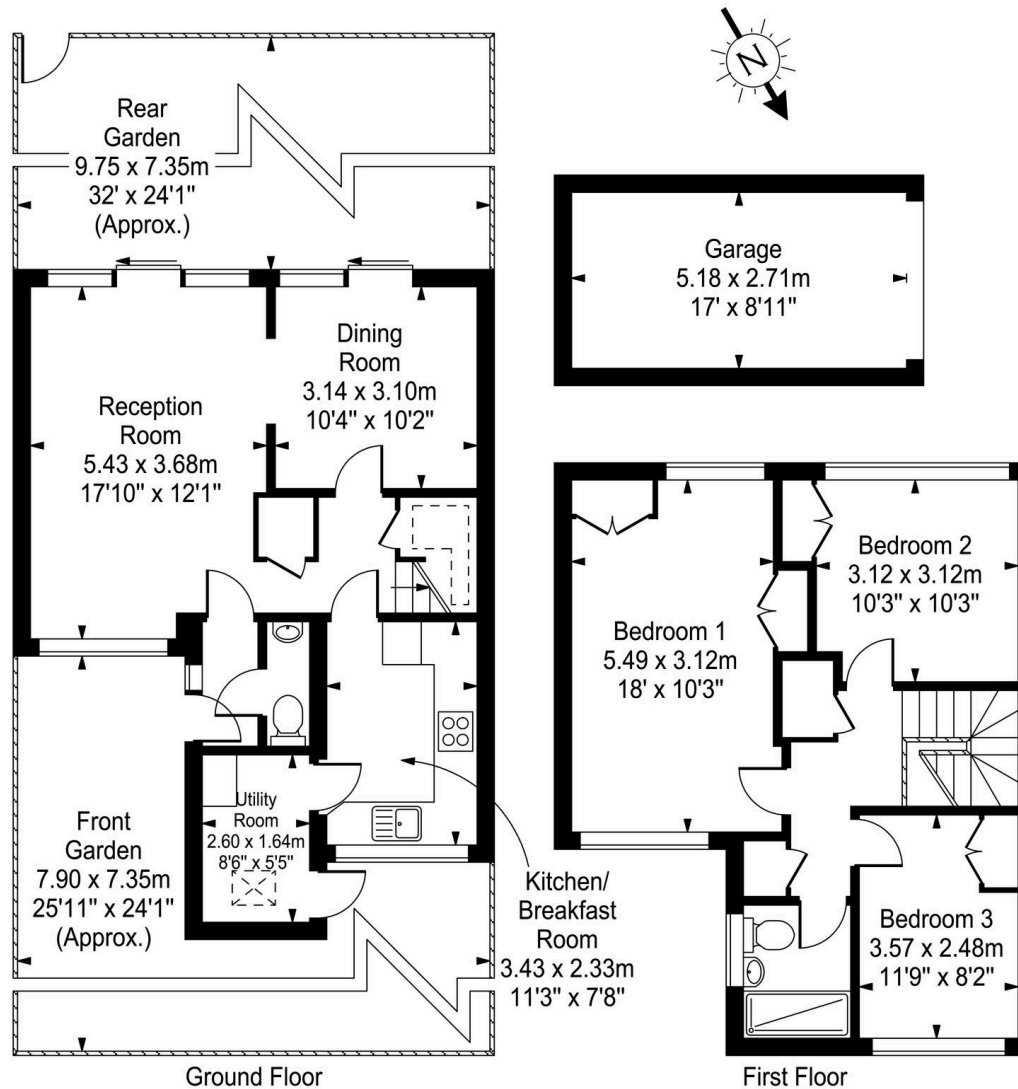


# Ashburnham Road

Approx. Gross Internal Area

105 Sq M - 1130 Sq Ft

(Excluding Garage)



Every attempt is made to assure accuracy, however measurements are approximate and for illustrative purposes only. Not to scale.

Floor plan by [www.frameworkphotos.co.uk](http://www.frameworkphotos.co.uk)



# Ashburnham Road

Richmond, Richmond

- Rarely available larger Chalet style 3 DOUBLE BEDROOM 2 RECEPTION HOUSE OVER 1100 SQ FT with GARAGE and sunny SW garden. VACANT/NO CHAIN!
- GROUND FLOOR CLOAKROOM : REFURBISHED 1st FLOOR BATHROOM. Kitchen/breakfast room and additional utility area.
- Bright and roomy double aspect main reception over 17 ft x 12 ft with patio doors to the garden, plus a further dining area over 10 ft square. Both with lovely parquet flooring.
- Double glazed throughout. Further potential to expand– the adjoining house has extended to the rear.
- Impressive 18 ft double aspect master bedroom with inbuilt wardrobe cupboards.
- This well maintained and cherished owner-occupied property has never been rented out and is offered to the market for the first time since 1972!
- Within reach of Ofsted 'Outstanding' Grey Court School plus the German School and a choice of nurseries and primaries.
- Located in the quiet end of Ashburnham Road near the protected open spaces of Ham Riverside Lands leading to the Thames towpath and riverside walks to Richmond, Kew and Kingston.

Located in the quiet end of Ashburnham Road near the protected open spaces of Ham Riverside Lands leading to the Thames towpath and riverside walks to Richmond, Kew and Kingston. Close to shops including Tesco Express, Post Office, Swiss bakery and Pharmacy. Nearby buses to Richmond and Kingston. Within reach of Ofsted Outstanding Grey Court School plus the German School and a choice of nurseries and primaries.

