



Flat 2, 24a Beeches Lane, Shrewsbury, SY1 1TZ
£900 Per Month



Flat 2, 24a Beeches Lane, Shrewsbury, SY1 1TZ

£900 Per Month

VIRTUAL TOUR AVAILABLE - Refurbished spacious three bedroom two storey maisonette in the heart of Shrewsbury town centre, just off Wyle Cop. Located in an historic building, this very spacious property offers updated accommodation over two floors with views out over Wyle Cop.

Available: IMMEDIATELY

Description

Comprising: Communal entrance hall shared with one other residential property, stairs to second floor, private entrance hall, large bedroom including walk in store cupboard, modern shower room, new kitchen including oven & hob, large living room with views over Wyle Cop, stairs to third floor, two further double bedrooms. Partial double glazing, new gas central heating system. EPC D

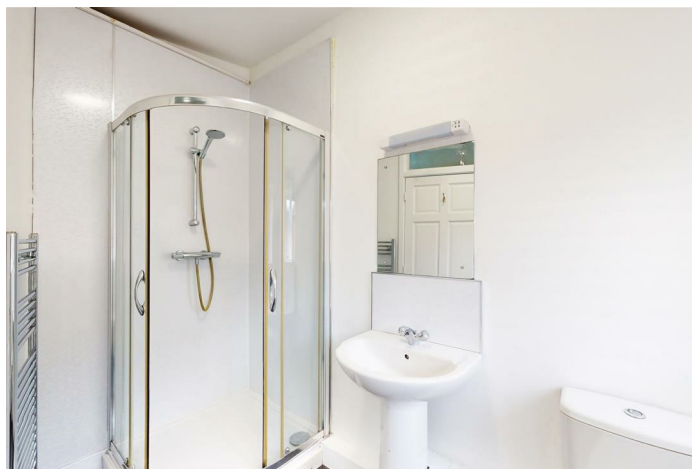


Unfurnished

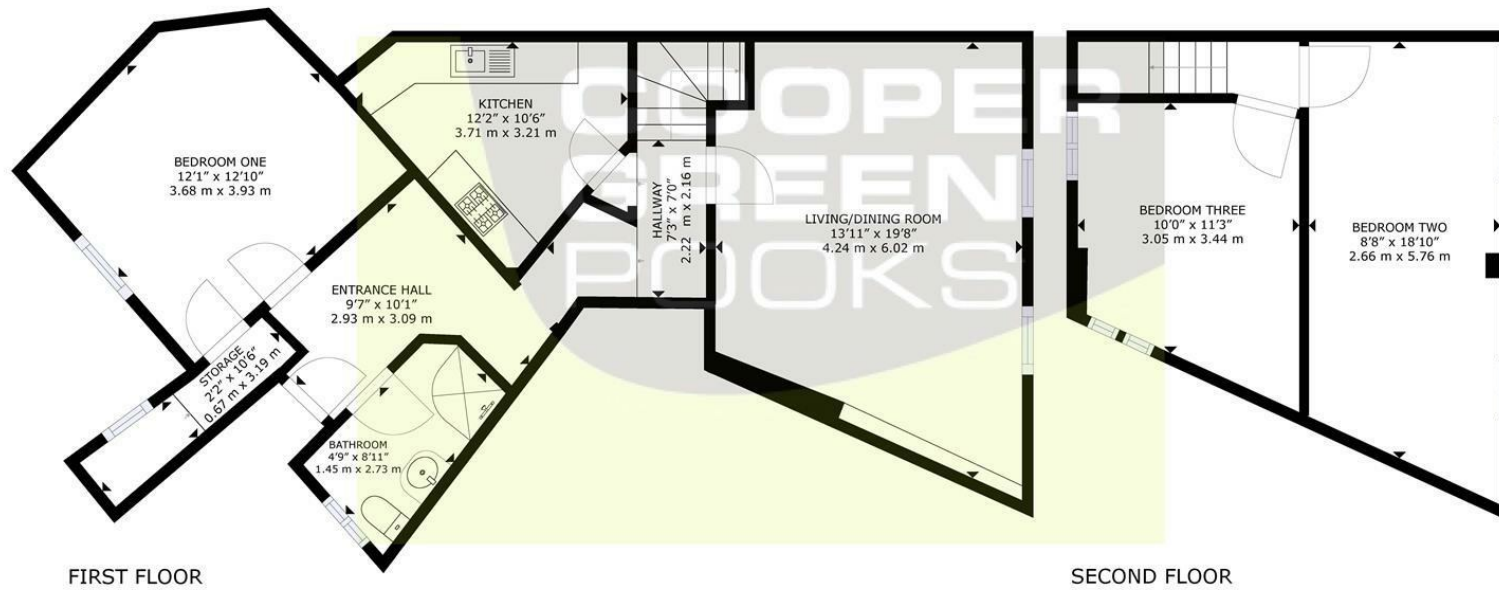
Council Tax Band: B

Available: 21st October 2024

EPC: D



Floor Plans



GROSS INTERNAL AREA
FIRST FLOOR: 698 sq. ft, 65 m², SECOND FLOOR: 317 sq. ft, 29 m²
TOTAL: 1,015 sq. ft, 94 m²
SIZES AND DIMENSIONS ARE APPROXIMATE, ACTUAL MAY VARY.

These particulars, whilst believed to be accurate are set out as a general outline only for guidance and do not constitute any part of an offer or contract. Intending purchasers should not rely on them as statements of representation of fact, but must satisfy themselves by inspection or otherwise as to their accuracy. No person in this firm's employment has the authority to make or give any representation or warranty in respect of the property.