



The Haughmond, Pelham Road, Upton Magna, Shrewsbury, SY4 4TZ
£1,295,000



The Haughmond, Pelham Road, Upton Magna, Shrewsbury, SY4 4TZ

£1,295,000

VIRTUAL TOURS AVAILABLE - A 6 bedroom detached property currently arranged as a fine dining restaurant with the upper floors already converted to immaculate en-suite double rooms. In addition there are two converted self contained barns, currently operating as three and four bed holiday lets. There is also a shop / café to the front and side of the plot with two further double en-suite rooms to let. An income profile for the property can be provided to interested parties upon application.

Description



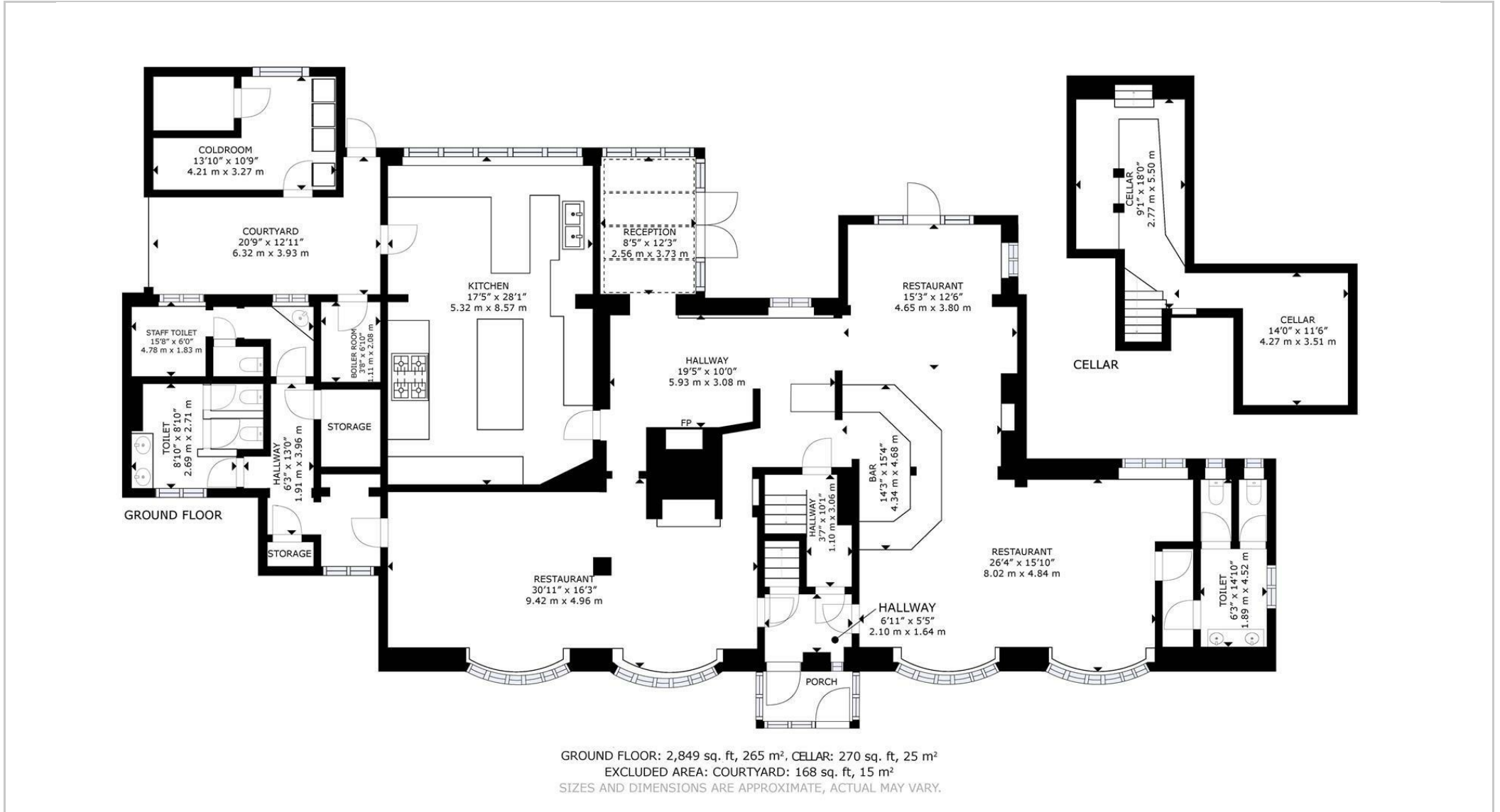
null

Council Tax Band:

Available:

EPC:

Floor Plans



These particulars, whilst believed to be accurate are set out as a general outline only for guidance and do not constitute any part of an offer or contract. Intending purchasers should not rely on them as statements of representation of fact, but must satisfy themselves by inspection or otherwise as to their accuracy. No person in this firm's employment has the authority to make or give any representation or warranty in respect of the property.