



## 18 Betton Strange Hall, Shrewsbury SY5 6JA

2 bedroom second floor apartment — £165,000 Leasehold



# 18 Betton Strange Hall, Shrewsbury SY5 6JA

Coopergreenpooks.co.uk

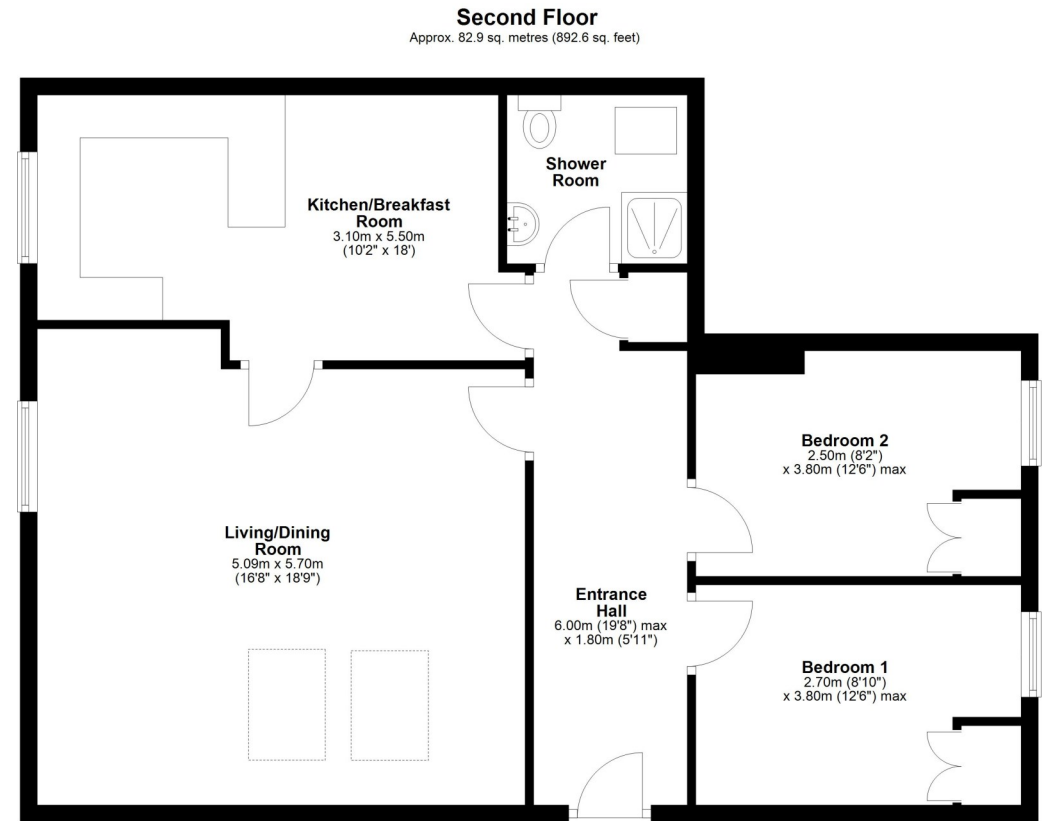
£165,000 Leasehold — 2 bedroom second floor apartment

sales@cgpooks.co.uk

Occupying an elevated position within a stunning former mansion house, this two-bedroom apartment offers spacious and well-designed accommodation, benefitting from beautiful views over landscaped communal gardens, surrounding countryside and The Wrekin. The property has recently been stripped back and re-plastered, creating a blank canvas for someone to finish off and make their own.

## KEY FEATURES

- Impressive communal entrance hall with a lovely turning staircase to a galleried landing
- Good sized private inner hallway with useful storage
- Large living/dining room with views to rear and two velux windows allowing plenty of natural light
- Open plan kitchen/breakfast room with a range of fitted units and breakfast bar
- Two double bedrooms, both with built in wardrobes and views to front, and a separate family shower room
- The property has recently had all carpets lifted, most walls re-plastered, and is now ready for someone to finish it off to their own personal taste
- Attractively landscaped communal grounds and woodland leading to a range of rural walks
- Extensive gravelled driveway and parking area for residents and guests
- Located just a few miles south of Shrewsbury, within easy access of the bypass as well as a range of excellent amenities
- Sold with no upward chain



Total area: approx. 82.9 sq. metres (892.6 sq. feet)

















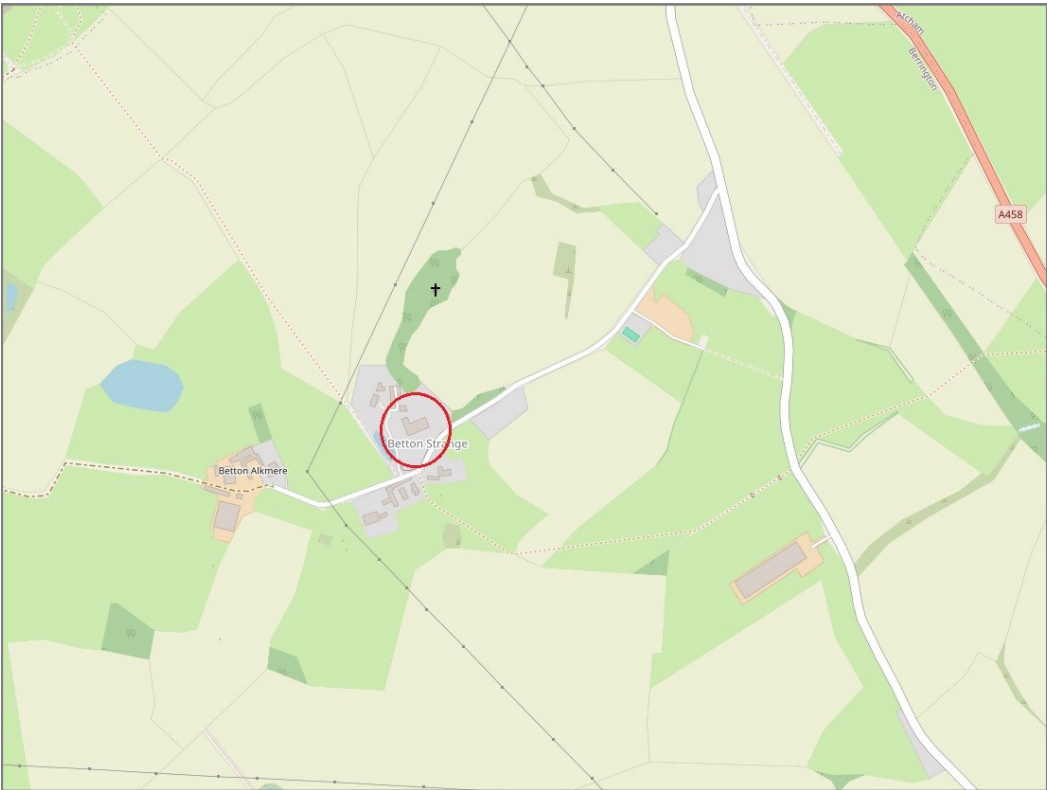


# 18 Betton Strange Hall, Shrewsbury SY5 6JA

£165,000 Leasehold — 2 bedroom second floor apartment  
sales@cgpooks.co.uk



**BOUNDARIES NOT CONFIRMED**



Tenure	<b>Leasehold</b>
Lease Length	<b>999 years from 1985</b>
Service Charge	<b>£1,440 per annum</b>
Ground Rent	<b>£10 per annum included in the service charge</b>

Local Authority	<b>Shropshire Council</b>
Council Tax	<b>Band B</b>
EPC Band	<b>Band D</b>
Services	<b>Mains services water, electricity and drainage are connected</b>
	<b>Heating is electric</b>

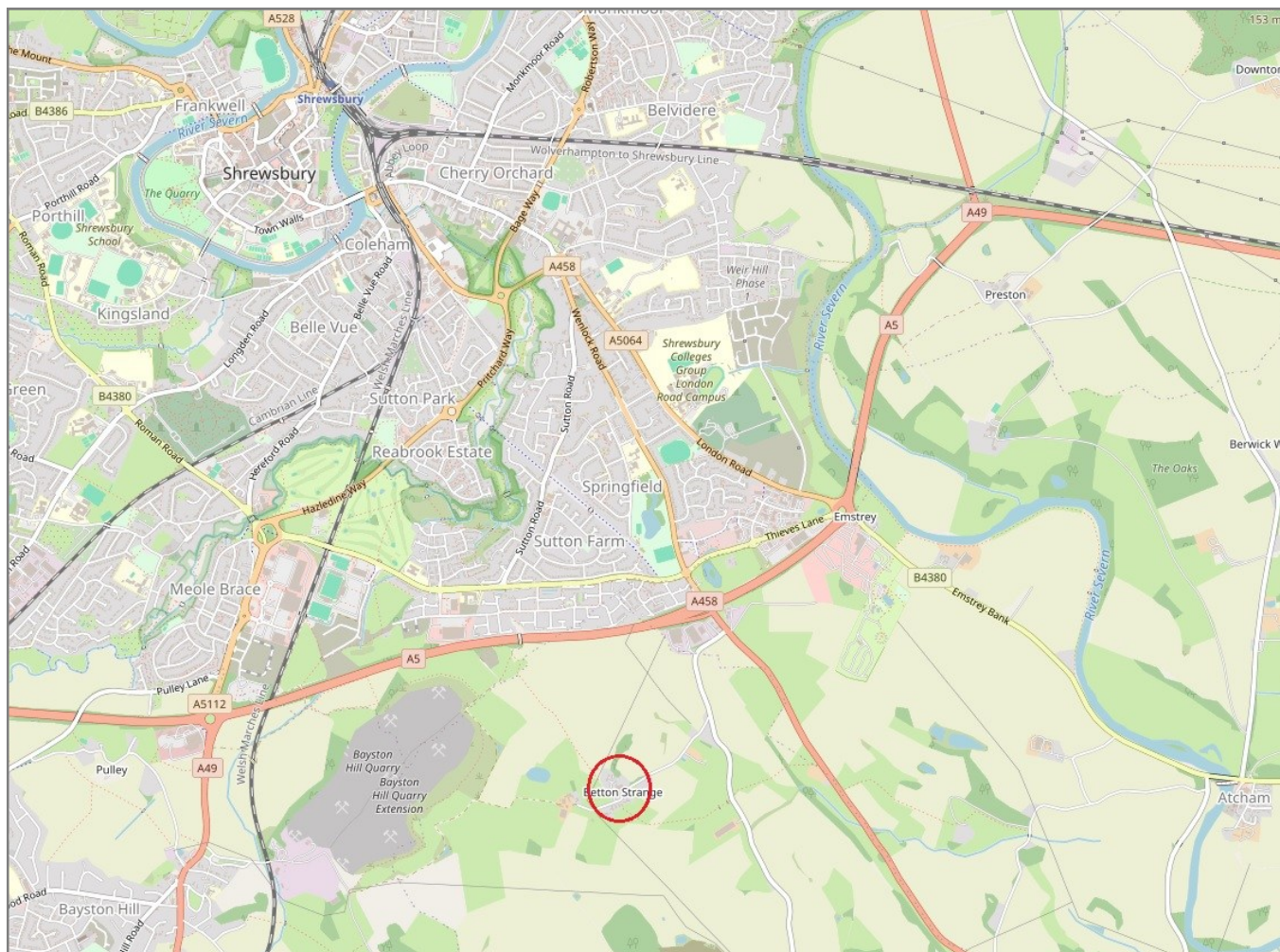


# 18 Betton Strange Hall, Shrewsbury SY5 6JA

Coopergreenpooks.co.uk

£165,000 Leasehold — 2 bedroom second floor apartment

sales@cgpooks.co.uk



**IMPORTANT NOTICE:** Cooper Green Pooks for themselves and for the lessors or vendors of this property whose agents they are give notice that: 1 No appliances, services or service installations have been tested and no warranty as to suitability or serviceability is implied. Any prospective purchaser or lessee is advised to obtain verification from their surveyor or solicitor. 2. The particulars are set out as a general outline only for the guidance of the intended purchasers or lessees and do not constitute, nor constitute part of, an offer or contract. 3. All descriptions, reference to condition and necessary permissions for use and occupation and other details are given in good faith and are believed to be correct but any intending purchasers or lessees should not rely on them as statements or representation of fact but satisfy themselves by inspection or otherwise as to the correctness of each of them. 4. No person in the employment of Cooper Green Pooks has any authority to make or give any representation or warranty whatsoever in relation to this property. 5. All rentals and prices are quoted exclusive of Stamp Duty, legal and surveyors fees and any other associated purchasers or lessees costs. 6. Floor plans are indicative only and should not be relied on. 7. The plan showing the boundary of the property is indicative only and has not been checked against the legal title so should not be relied on. 8. All dimensions, floor areas and site areas are only approximate and should not be relied on. Dimensions are generally maximum room dimension.