



14, Leedham Close, Bicton Heath, Shrewsbury, SY3 5FP
£950 Per Month



14, Leedham Close, Bicton Heath, Shrewsbury, SY3 5FP

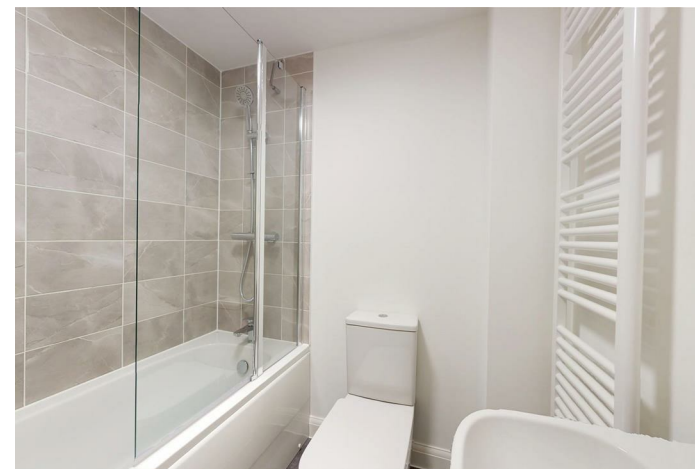
£950 Per Month

VIRTUAL TOUR AVAILABLE: New build two double bedroom end-terraced house on the attractive Rose Place development, to the west of Shrewsbury town centre. Includes south facing rear garden and side by side driveway parking for 2 cars. Includes EV charging point and solar panels on the roof.

Available: Immediately

Description

Comprising: Entrance hall, downstairs cloakroom, kitchen including oven, hob, fridge/freezer, washer/dryer and dishwasher, living room including double doors to rear garden and understairs storage cupboard. Stairs to first floor landing, two double bedrooms, bathroom including shower over. Gas central heating, double glazing. Solar panels on the south facing roof, south facing rear garden including shed, side by side driveway parking for two cars including EV charging point. Curtain poles and bathroom mirrors being installed prior to tenancy commencing. EPC B



Unfurnished

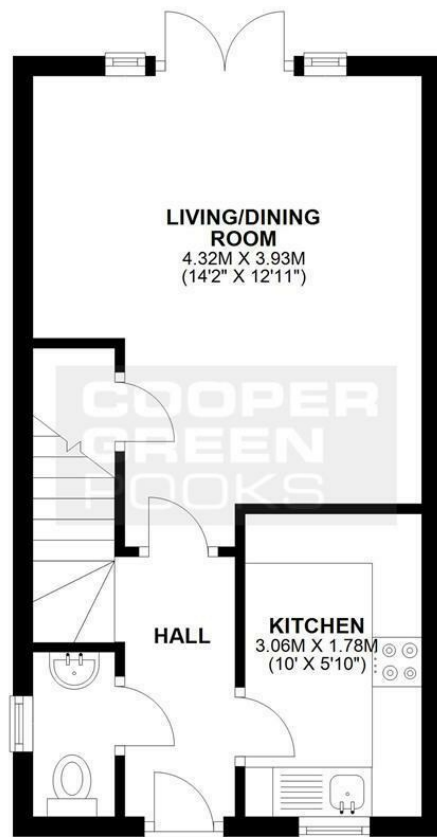
Council Tax Band: New Build

Available: 2nd January 2026

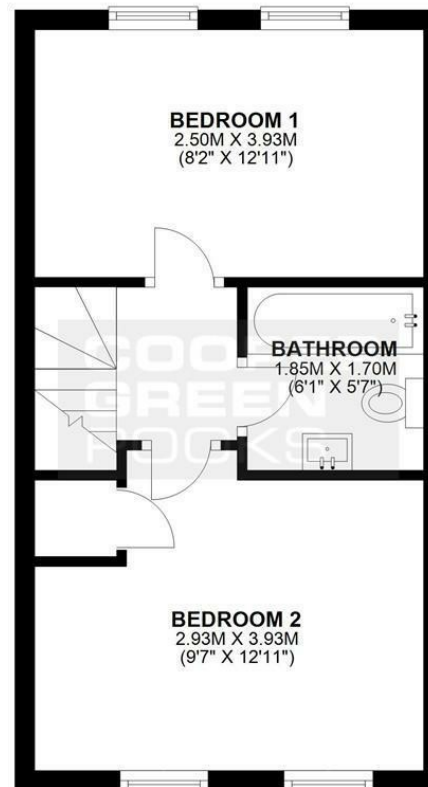
EPC: B

Floor Plans

APPROX. 29.3 SQ. METRES (315.6 SQ. FEET)



APPROX. 29.5 SQ. METRES (317.2 SQ. FEET)



We accept no responsibility for any mistake or inaccuracy contained within the floorplan. The floorplan is provided as a guide only and should be taken as an illustration only. The measurements, contents and positioning are approximations only and provided as a guidance tool and not an exact replication of the property.
Plan produced using PlanUp.

These particulars, whilst believed to be accurate are set out as a general outline only for guidance and do not constitute any part of an offer or contract. Intending purchasers should not rely on them as statements of representation of fact, but must satisfy themselves by inspection or otherwise as to their accuracy. No person in this firm's employment has the authority to make or give any representation or warranty in respect of the property.