

The Coach House, The Fields, Kingsland Road, Kingsland, Shrewsbury, SY3 7AF
£1,500 Per Month



The Coach House, The Fields, Kingsland Road, Kingsland, Shrewsbury, SY3 7AF

£1,500 Per Month

VIRTUAL TOUR AVAILABLE - A spacious and unique two bedroom FULLY FURNISHED property tucked away off Kingsland Road, one of the most prestigious residential areas, a short walk from the centre of Shrewsbury and the Quarry.

Available: 07/01/2026

Description

Comprising: Entrance hallway with utility including free standing washing machine and tumble dryer, separate WC, open plan living area with floor to ceiling window with views over gardens and electric log burner, kitchen including integrated appliances and breakfast bar. Stairs to first floor landing and mezzanine style sitting area, large double bedroom with built in storage, second bedroom/study and bathroom with separate shower and bath. Secure driveway parking. Double glazing. Gas Central Heating. EPC C.



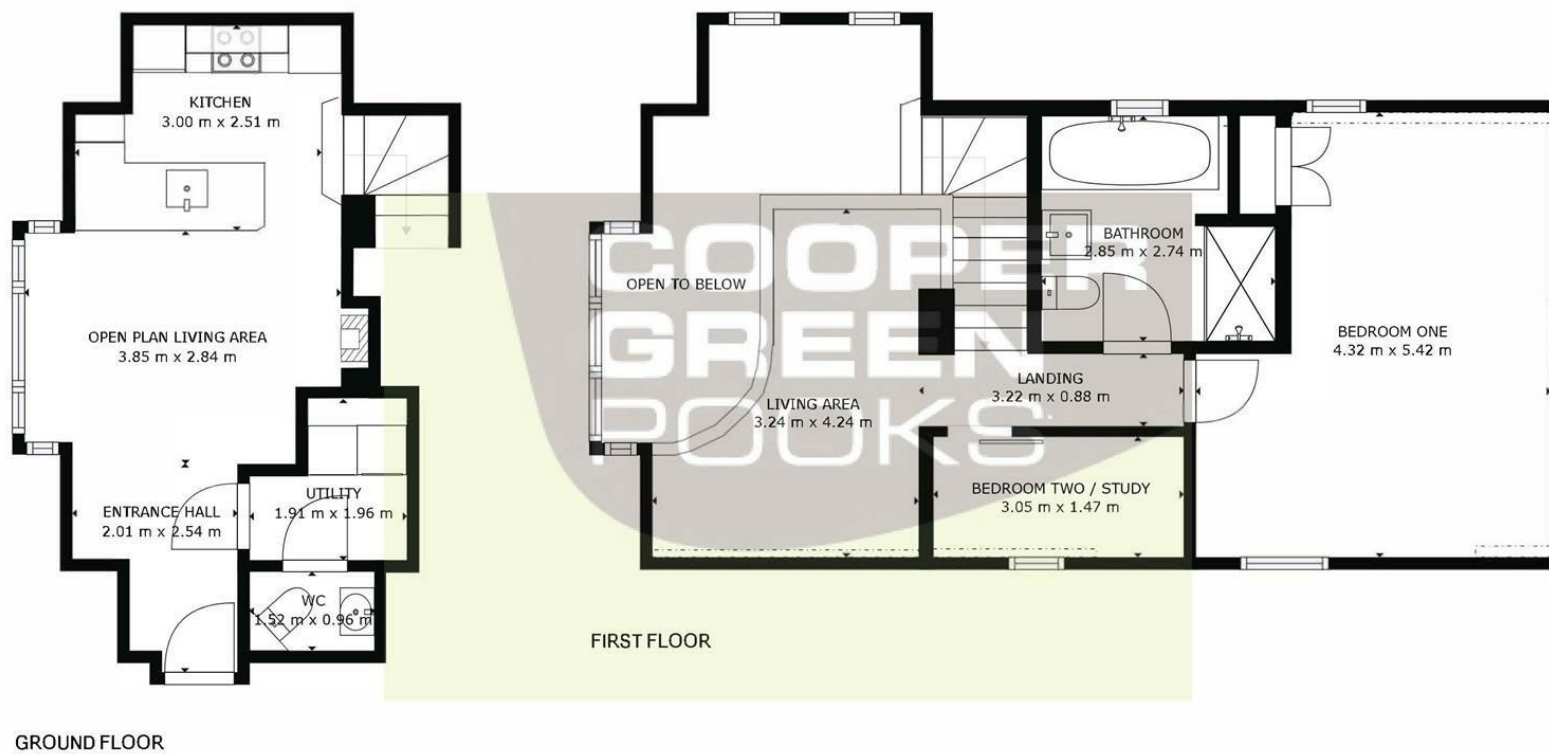
Furnished

Council Tax Band: B

Available: 7th January 2025

EPC: C

Floor Plans



GROSS INTERNAL AREA
GROUND FLOOR: 29 m², FIRST FLOOR: 51 m²
REDUCED HEADROOM BELOW 1.5M: 1 m² TOTAL: 80 m²
SIZES AND DIMENSIONS ARE APPROXIMATE, ACTUAL MAY VARY.

These particulars, whilst believed to be accurate are set out as a general outline only for guidance and do not constitute any part of an offer or contract. Intending purchasers should not rely on them as statements of representation of fact, but must satisfy themselves by inspection or otherwise as to their accuracy. No person in this firm's employment has the authority to make or give any representation or warranty in respect of the property.