



146, Gains Avenue, Bicton Heath, Shrewsbury, SY3 5BA

£750 Per Month



146, Gains Avenue, Bicton Heath, Shrewsbury, SY3 5BA

£750 Per Month

Well presented two bedroom semi detached bungalow in a quiet residential area close to RSH, bus routes and a range of other useful amenities. Includes driveway parking for one car.

Available: 16/12/25

Description

Comprising: Entrance hall including airing cupboard, kitchen including freestanding electric cooker, good sized living room including electric fire, master bedroom including fitted wardrobes and cupboards, further double bedroom, walk in shower room. Rear porch leading to easy to maintain rear garden including shed. Existing curtains and blinds included. Driveway parking for one car. Gas central heating, double glazing. EPC D.



Unfurnished

Council Tax Band: B

Available: 16th December 2025

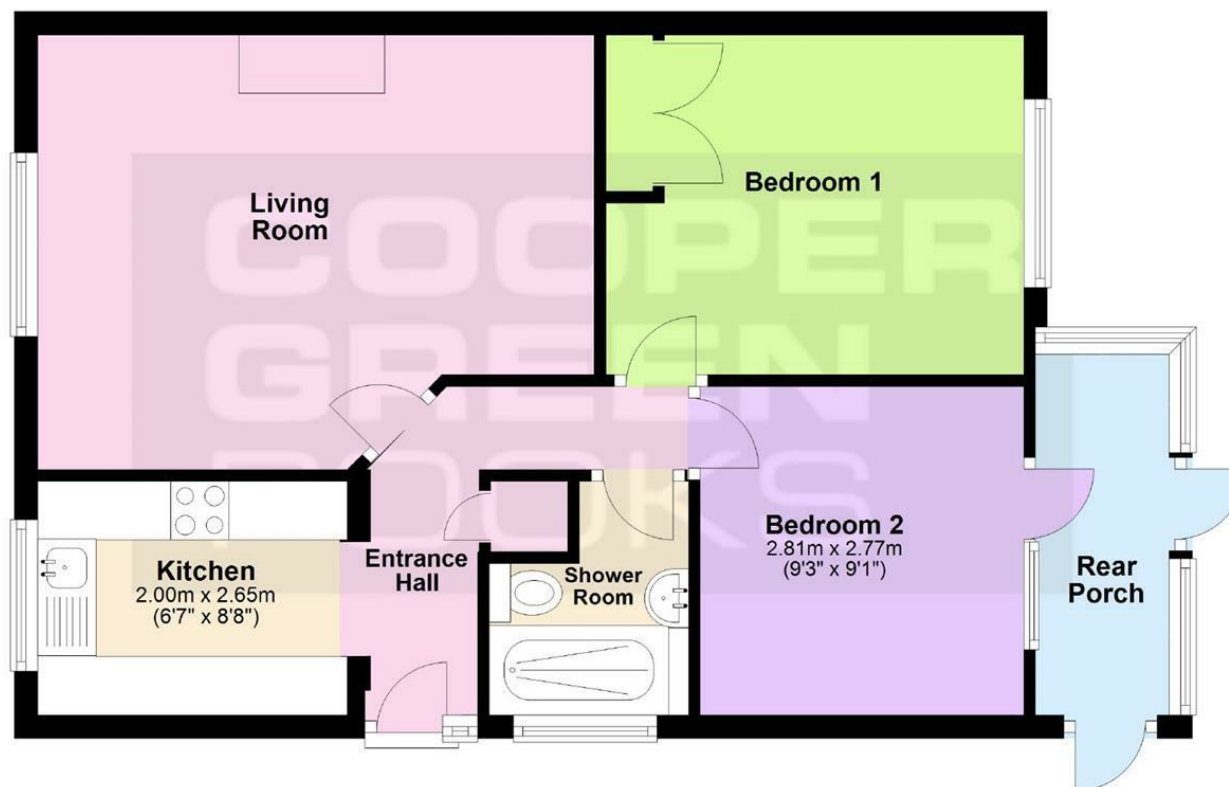
EPC: D



Floor Plans

Ground Floor

Approx. 52.7 sq. metres (567.0 sq. feet)



Total area: approx. 52.7 sq. metres (567.0 sq. feet)

We accept no responsibility for any mistake or inaccuracy contained within the floorplan. The floorplan is provided as a guide only and should be taken as an illustration only. The measurements, contents and positioning are approximations only and provided as a guidance tool and not an exact replication of the property.

Plan produced using PlanUp.

These particulars, whilst believed to be accurate are set out as a general outline only for guidance and do not constitute any part of an offer or contract. Intending purchasers should not rely on them as statements of representation of fact, but must satisfy themselves by inspection or otherwise as to their accuracy. No person in this firm's employment has the authority to make or give any representation or warranty in respect of the property.