



**12, Lanesfield, Radbrook, Shrewsbury, SY3 6DA**  
£800 Per Month





12, Lanesfield, Radbrook, Shrewsbury, SY3 6DA

**£800 Per Month**

VIRTUAL TOUR AVAILABLE - A well presented two bedroom semi-detached house occupying a cul-de-sac position within this popular development to the south west of Shrewsbury and within walking distance of shops and schools.

Available: 14/11/25



## Description

Comprising: Entrance lobby, living room with feature wall and fire place, modern breakfast kitchen with white goods, under-stairs storage cupboard, master bedroom with built in wardrobes, double bedroom, bathroom with shower, gas central heating, full double glazing, driveway parking, rear garden with large shed and patio. EPC D

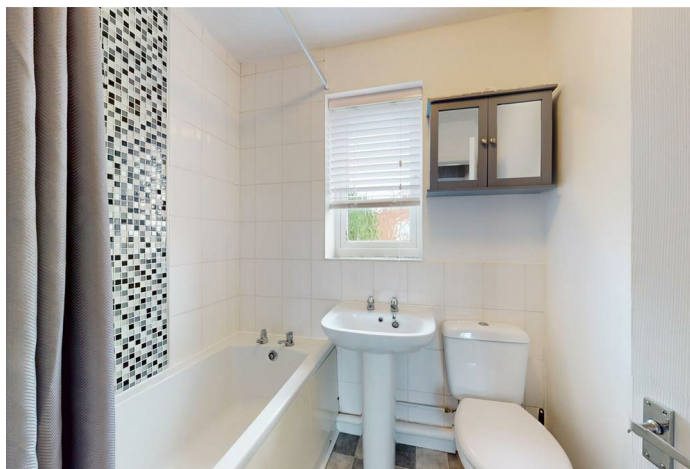


Unfurnished

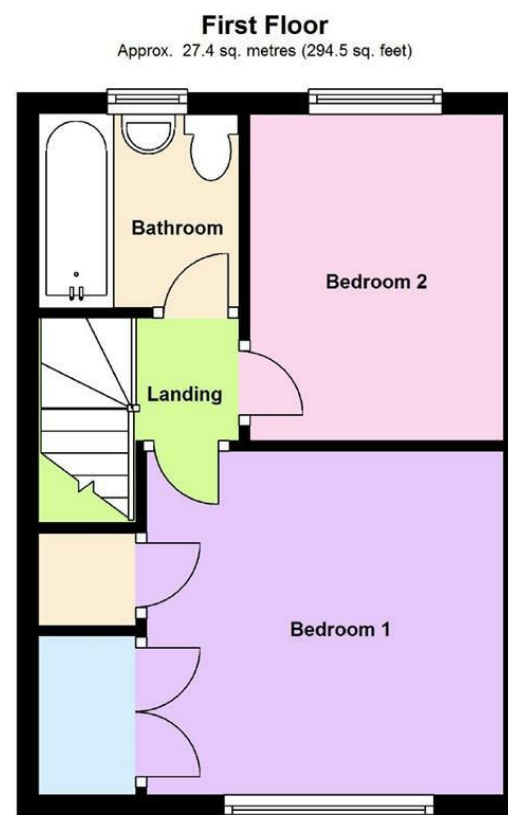
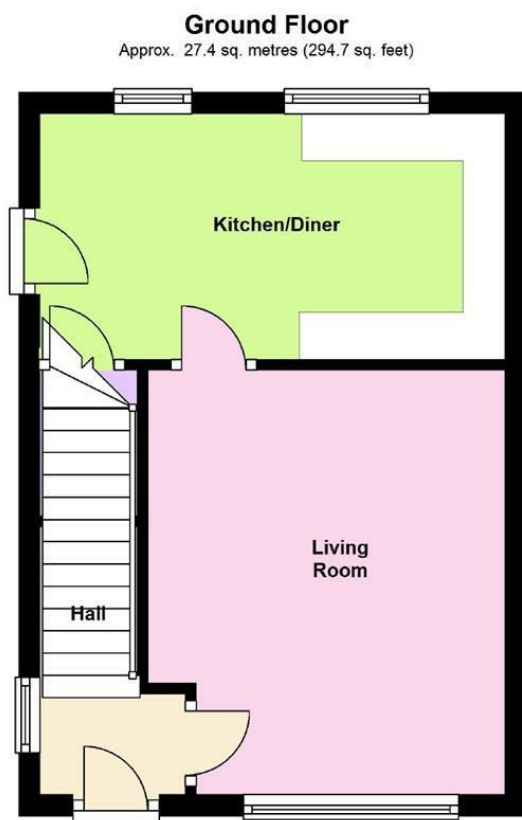
Council Tax Band: B

Available: 14th November 2025

EPC: D



## Floor Plans



Total area: approx. 54.7 sq. metres (589.2 sq. feet)

We accept no responsibility for any mistake or inaccuracy contained within the floorplan. The floorplan is provided as a guide only and should be taken as an illustration only. The measurements, contents and positioning are approximations only and provided as a guidance tool and not an exact replication of the property.  
Plan produced using PlanUp.

These particulars, whilst believed to be accurate are set out as a general outline only for guidance and do not constitute any part of an offer or contract. Intending purchasers should not rely on them as statements of representation of fact, but must satisfy themselves by inspection or otherwise as to their accuracy. No person in this firm's employment has the authority to make or give any representation or warranty in respect of the property.