

Flat B, 14, St Alkmunds Square, Shrewsbury, SY1 1UH  
£800 Per Month





Flat B, 14, St Alkmunds Square, Shrewsbury, SY1 1UH

**£800 Per Month**

VIRTUAL TOUR AVAILABLE - A lovely two bedroom ground floor apartment of character, located within this attractive Grade II listed former school, tucked away in a superb town centre location, a stones throw from all the main shopping areas of Shrewsbury.

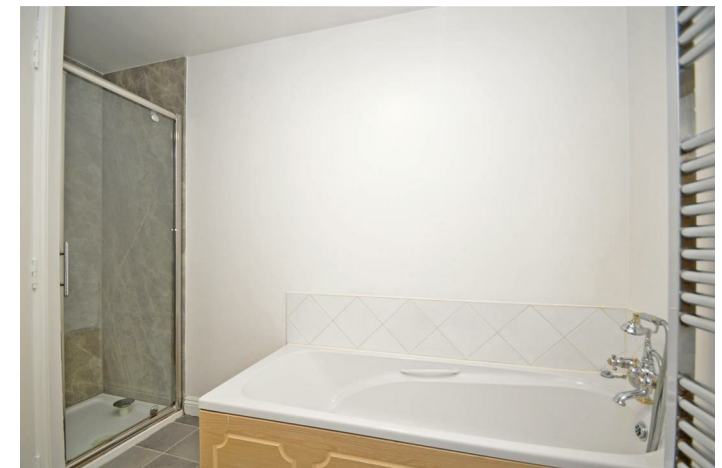
Available: 31/10/2025

## Description

Entrance hall, living room, kitchen/breakfast room including oven & gas hob, two bedrooms, bathroom including separate shower. Gas fired central heating, EPC C.



Unfurnished  
Council Tax Band: C  
Available: 31st October 2025  
EPC: C



## Floor Plans

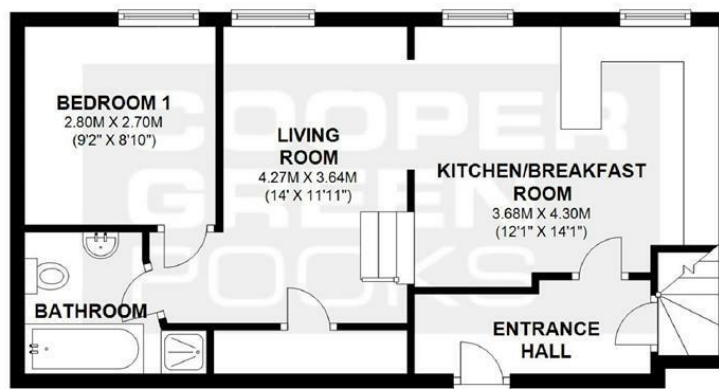
### BASEMENT

APPROX. 17.2 SQ. METRES (185.4 SQ. FEET)



### GROUND FLOOR

APPROX. 48.4 SQ. METRES (520.8 SQ. FEET)



**TOTAL AREA: APPROX. 65.6 SQ. METRES (706.2 SQ. FEET)**

We accept no responsibility for any mistake or inaccuracy contained within the floorplan. The floorplan is provided as a guide only and should be taken as an illustration only. The measurements, contents and positioning are approximations only and provided as a guidance tool and not an exact replication of the property.

Plan produced using PlanUp.

These particulars, whilst believed to be accurate are set out as a general outline only for guidance and do not constitute any part of an offer or contract. Intending purchasers should not rely on them as statements of representation of fact, but must satisfy themselves by inspection or otherwise as to their accuracy. No person in this firm's employment has the authority to make or give any representation or warranty in respect of the property.