



10, Griffiths Close, The Spinney, Shrewsbury, SY2 6FZ
£1,200 Per Month



10, Griffiths Close, The Spinney, Shrewsbury, SY2 6FZ

£1,200 Per Month

Occupying a lovely position with a pleasant outlook, this recently built semi-detached three bedroom house offers well-designed accommodation, while benefitting from a larger than standard private rear garden and driveway parking for two cars. A very quiet and convenient location, just a short distance from some excellent amenities, road links via the bypass, and less than two miles from the town centre

Available from: 31/10/2025

Description

Comprising: Entrance hall with cloakroom, opening to a good-sized living room with views to front, impressive open plan kitchen/dining room complete with integrated slimline dishwasher, fridge/freezer, oven, hob and space for a washing machine, glazed double doors to the rear garden, master bedroom with built in storage and en-suite shower room, two further bedrooms and a well-appointed family bathroom. Views from the first floor over the play area and green open space, uPVC double glazed windows and gas fired central heating, private rear garden, laid to lawn with paved sun terrace and gated access to side. Driveway parking for two cars. EPC B.



Unfurnished

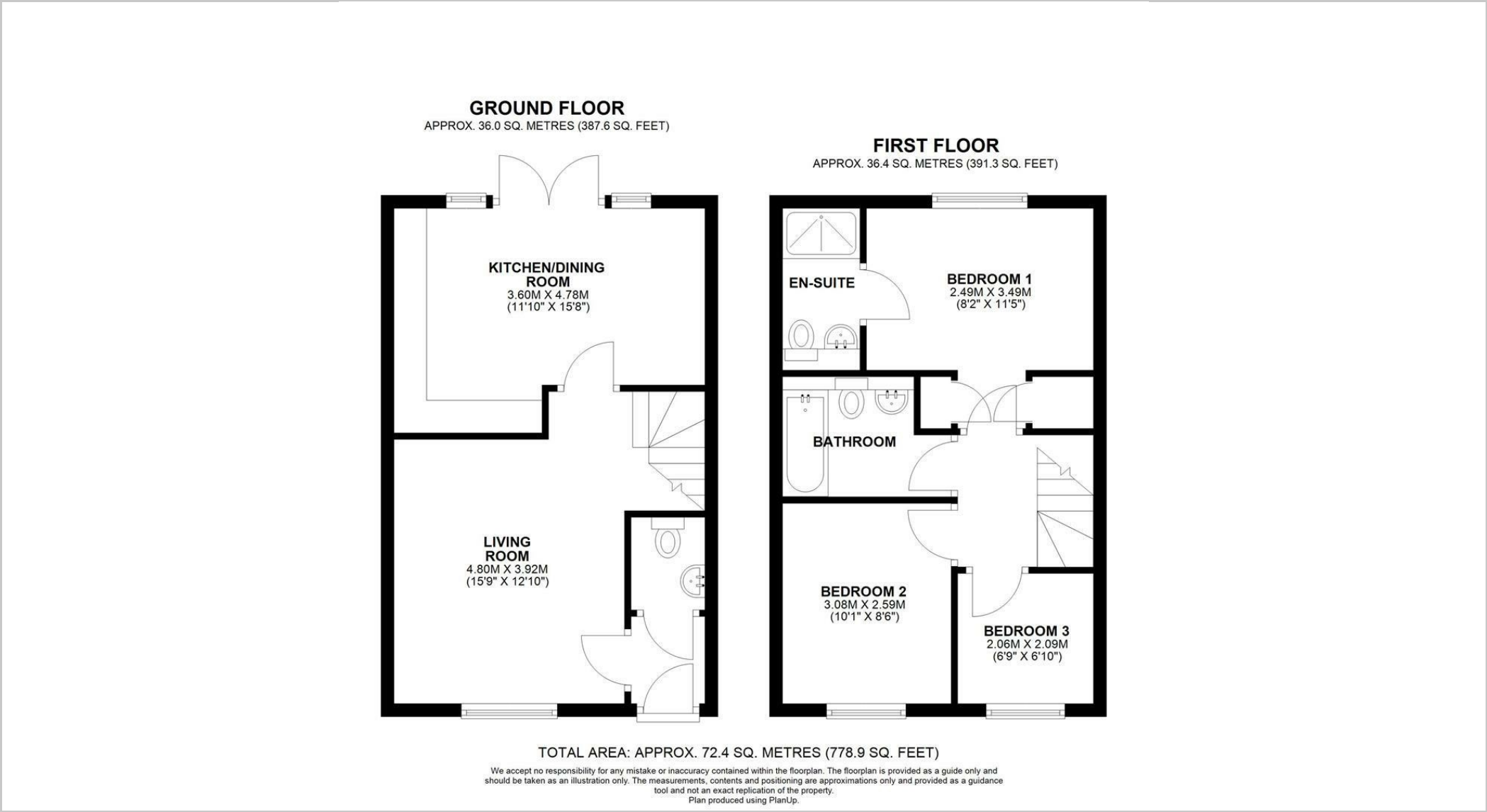
Council Tax Band: C

Available: 31st October 2025

EPC: B



Floor Plans



These particulars, whilst believed to be accurate are set out as a general outline only for guidance and do not constitute any part of an offer or contract. Intending purchasers should not rely on them as statements of representation of fact, but must satisfy themselves by inspection or otherwise as to their accuracy. No person in this firms employment has the authority to make or give any representation or warranty in respect of the property.