



24, Manor Crest, Ford, Shrewsbury, SY5 9NZ
£895 Per Month



24, Manor Crest, Ford, Shrewsbury, SY5 9NZ

£895 Per Month

VIRTUAL TOUR AVAILABLE - An attractive and spacious three bedroom semi-detached house situated in the popular village of Ford a short distance to the west of Shrewsbury town centre.

Available: 13/12/2025

Description

Comprising: Entrance vestibule, living room with electric fire, kitchen/dining room with cooker and spaces for appliances, conservatory, shower room, family room. Stairs to first floor landing, bedroom one with integrated wardrobe, further double bedroom, further single bedroom, bathroom with shower over bath. Front and rear gardens. Driveway parking. Shed. Double Glazing. Electric heating. EPC D.



Unfurnished

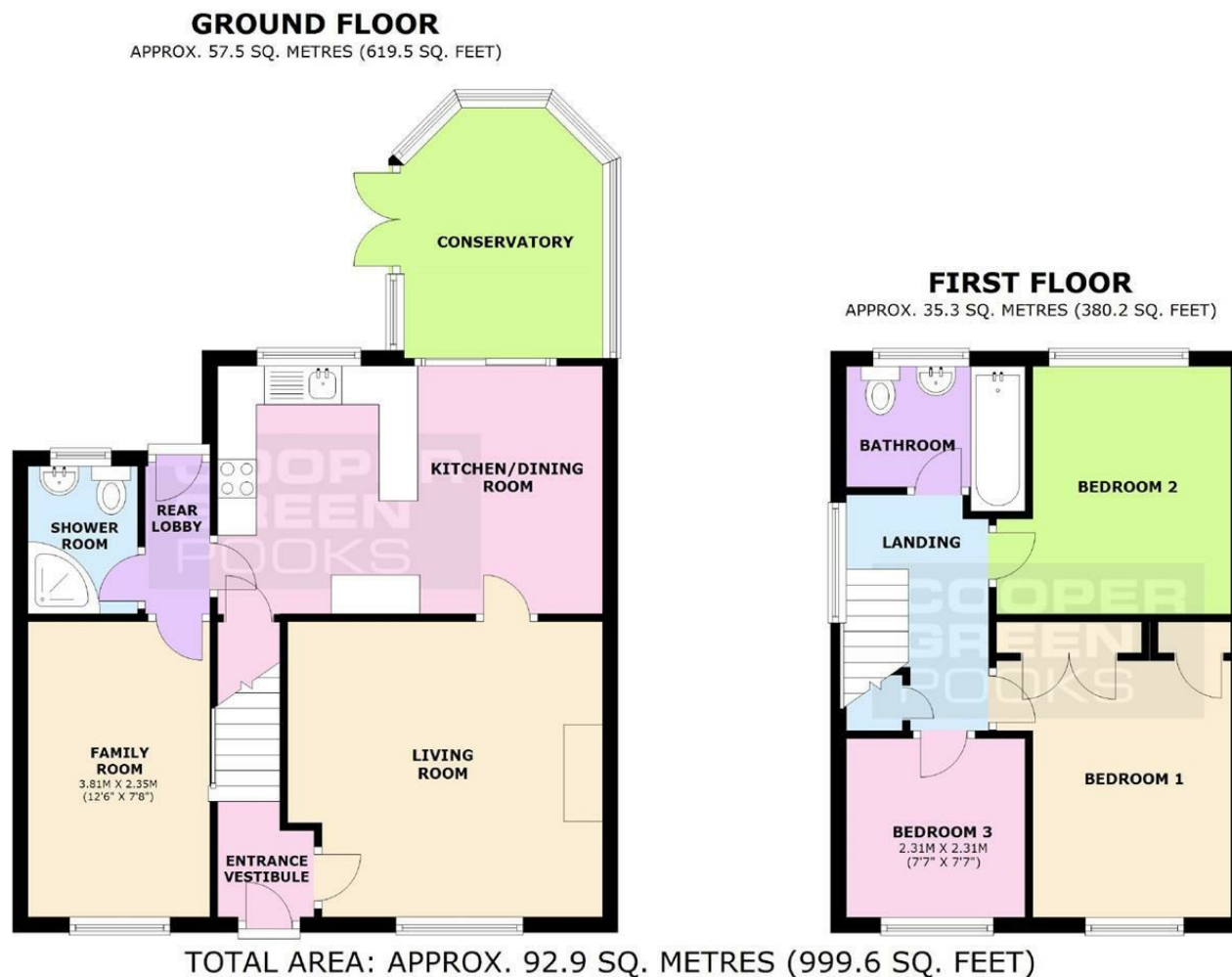
Council Tax Band: B

Available: 13th December 2025

EPC: D



Floor Plans



We accept no responsibility for any mistake or inaccuracy contained within the floorplan. The floorplan is provided as a guide only and should be taken as an illustration only. The measurements, contents and positioning are approximations only and provided as a guidance tool and not an exact replication of the property.

Plan produced using PlanUp.

These particulars, whilst believed to be accurate are set out as a general outline only for guidance and do not constitute any part of an offer or contract. Intending purchasers should not rely on them as statements of representation of fact, but must satisfy themselves by inspection or otherwise as to their accuracy. No person in this firm's employment has the authority to make or give any representation or warranty in respect of the property.