



## 64 Redwing Fields, Shrewsbury SY2 5SZ

3 bedroom semi-detached house—£285,000 Freehold



## 64 Redwing Fields, Shrewsbury SY2 5SZ

£285,000 Freehold—3 bedroom semi-detached house

[sales@cgpooks.co.uk](mailto:sales@cgpooks.co.uk)

Occupying a lovely position with fantastic views over green open space, this beautifully presented semi-detached house has been improved to provide thoughtfully designed accommodation, while benefitting from an attractively landscaped garden, driveway parking and purpose-built garden office/workshop.

### KEY FEATURES

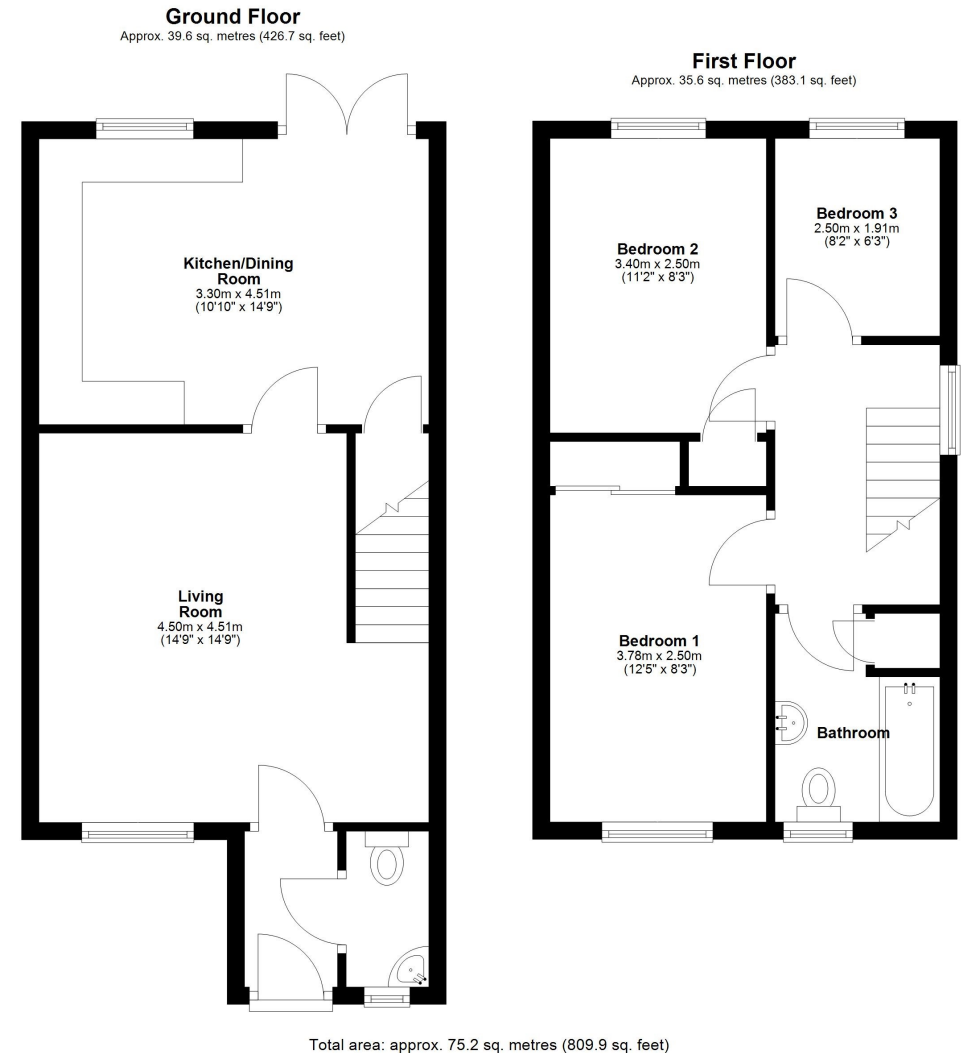
- Entrance hall with cloakroom, opening to a good-sized living room with views to front
- Open plan kitchen/dining room with glazed double doors onto the rear garden
- Two double bedrooms with built in wardrobes, a further single bedroom and well-appointed family bathroom with shower
- Impressive views from the first floor over open fields and countryside
- uPVC double glazed windows and gas fired central heating
- Landscaped private rear garden, laid to lawn with paved sun terrace and canopy, useful store and access to side
- A recently built garden office/workshop is also included in the sale, which has power and lighting, creating the perfect home office, play room, summer house or excellent storage
- To the front of the property is driveway parking for two cars
- A very quiet and convenient location, close to some lovely walks including the Shropshire Way and along the River Severn. The property is also just a short distance from various schools, including Belvidere secondary, and lots of amenities, as well as road links via the bypass and the town centre

Cooper Green Pooks  
3 Barker Street  
Shrewsbury  
SY1 1QF

[www.cgpooks.co.uk](http://www.cgpooks.co.uk)  
[sales@cgpooks.co.uk](mailto:sales@cgpooks.co.uk)



[Coopergreenpooks.co.uk](http://Coopergreenpooks.co.uk)























## 64 Redwing Fields, Shrewsbury SY2 5SZ

£285,000 Freehold—3 bedroom semi-detached house

[sales@cgpooks.co.uk](mailto:sales@cgpooks.co.uk)

rightmove

onTheMarket.com



**BOUNDARIES NOT CONFIRMED**



Tenure	<b>Freehold</b>
Local Authority	<b>Shropshire Council</b>
Council Tax	<b>Band C</b>
EPC Band	<b>Band B</b>
Services	<b>All mains services are connected</b>

**Expert mortgage advice available**

3 Barker St, Shrewsbury SY1 1QF

**Cooper Green Pooks**  
**01743 276666**



Your home may be repossessed if you do not keep up repayments on your mortgage.

There may be a fee for mortgage advice. The actual amount you pay will depend upon your circumstances. The fee is up to 1% but a typical fee is 0.3% of the amount borrowed.

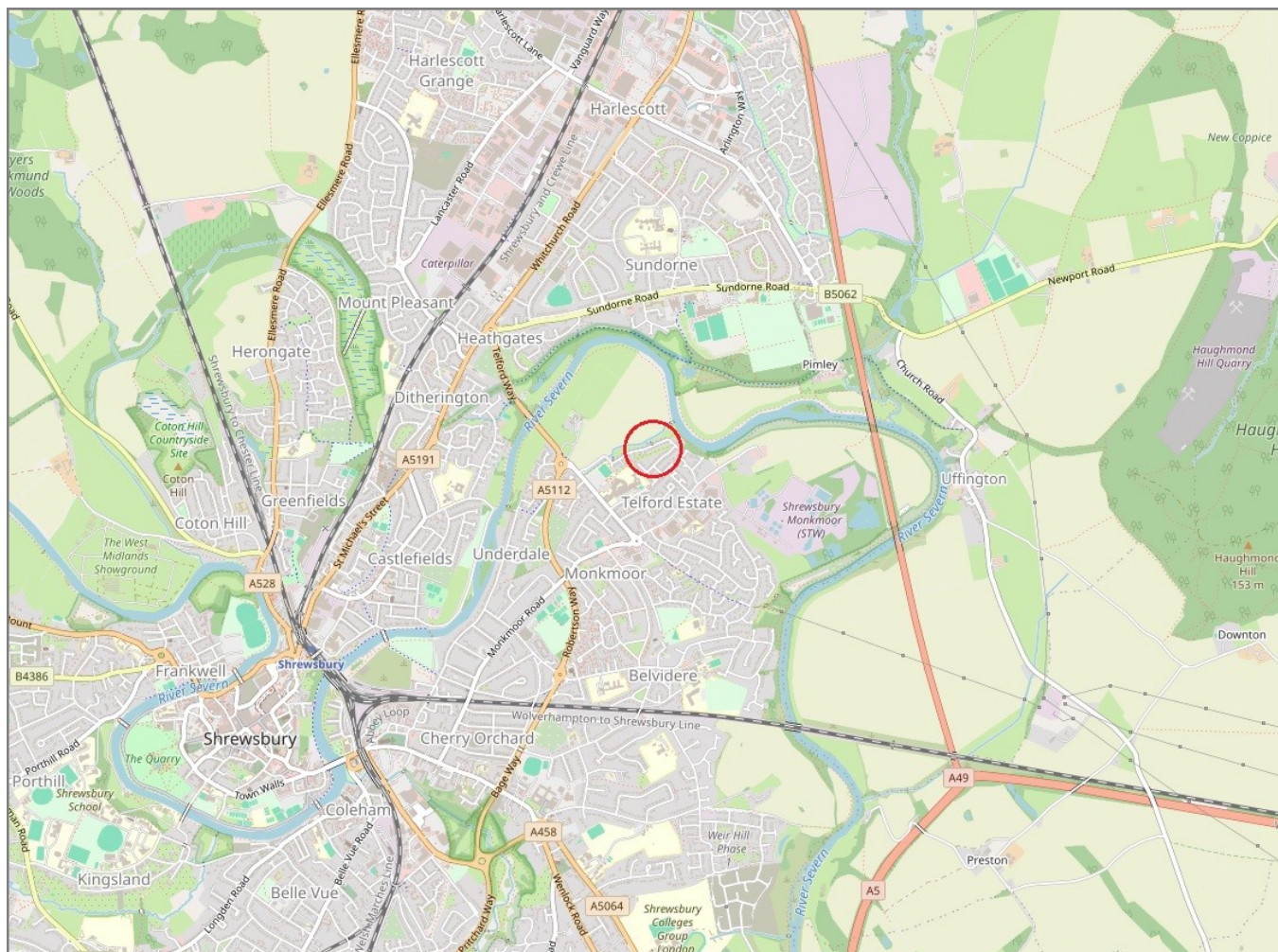


## 64 Redwing Fields, Shrewsbury SY2 5SZ

Coopergreenpooks.co.uk

£285,000 Freehold—3 bedroom semi-detached house

sales@cgpooks.co.uk



**IMPORTANT NOTICE:** Cooper Green Pooks for themselves and for the lessors or vendors of this property whose agents they are give notice that: 1. No appliances, services or service installations have been tested and no warranty as to suitability or serviceability is implied. Any prospective purchaser or lessee is advised to obtain verification from their surveyor or solicitor. 2. The particulars are set out as a general outline only for the guidance of the intended purchasers or lessees and do not constitute, nor constitute part of, an offer or contract. 3. All descriptions, reference to condition and necessary permissions for use and occupation and other details are given in good faith and are believed to be correct but any intending purchasers or lessees should not rely on them as statements or representation of fact but satisfy themselves by inspection or otherwise as to the correctness of each of them. 4. No person in the employment of Cooper Green Pooks has any authority to make or give any representation or warranty whatsoever in relation to this property. 5. All rentals and prices are quoted exclusive of Stamp Duty, legal and surveyors fees and any other associated purchasers or lessees costs. 6. Floor plans are indicative only and should not be relied on. 7. The plan showing the boundary of the property is indicative only and has not been checked against the legal title so should not be relied on. 8. All dimensions, floor areas and site areas are only approximate and should not be relied on. Dimensions are generally maximum room dimension.