



## 9 Meadow View, Yockleton, Shrewsbury, SY5 9PA

4 bedroom detached house—Offers in the region of £392,000 Freehold



## 9 Meadow View, Yockleton, Shrewsbury, SY5 9PA

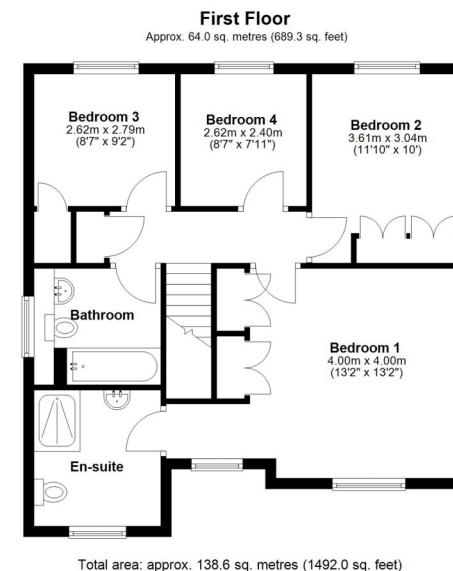
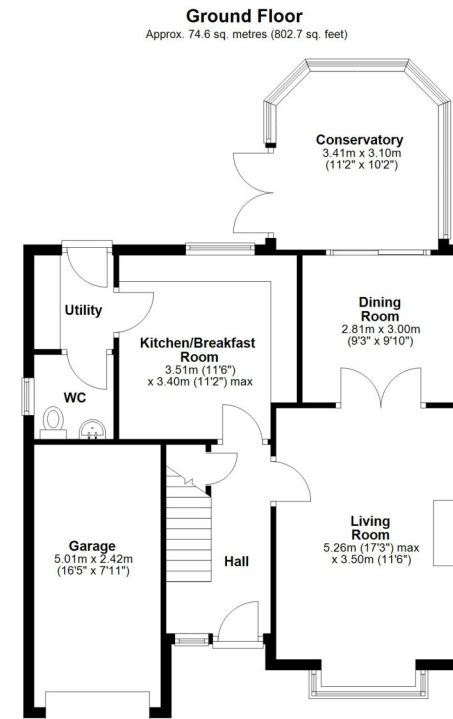
Coopergreenpooks.co.uk

Offers in the region of £392,000 Freehold—4 bedroom detached house  
sales@cgpooks.co.uk

Occupying a lovely setting, tucked away within a quiet cul-de-sac overlooking woodland, this neatly presented detached family house offers practical and well-designed accommodation, while benefitting from a private rear garden, plenty of driveway parking and integral single garage.

### KEY FEATURES

- Covered entrance and good-sized hallway with useful under stairs storage
- Living room with feature fireplace and bay window to front
- Separate dining room opening onto the conservatory, which has glazed doors to the rear garden
- Kitchen/breakfast room a range of fitted units and access to the utility, connecting to both the cloakroom and garden
- Large master bedroom, complete with built-in wardrobes and en-suite shower room
- Three further bedrooms, two of which also have built-in storage, and a well-appointed family bathroom
- uPVC double glazed windows and gas fired central heating
- Private rear garden, laid to lawn with paved terraces, planted borders and gated access to side
- To the front of the property is a block paved driveway providing parking for at least four cars
- A fantastic position with a beautiful outlook over woodland, situated within a 5-minute drive of the bypass and just over ten minutes from Shrewsbury town centre





















## 9 Meadow View, Yockleton, Shrewsbury, SY5 9PA

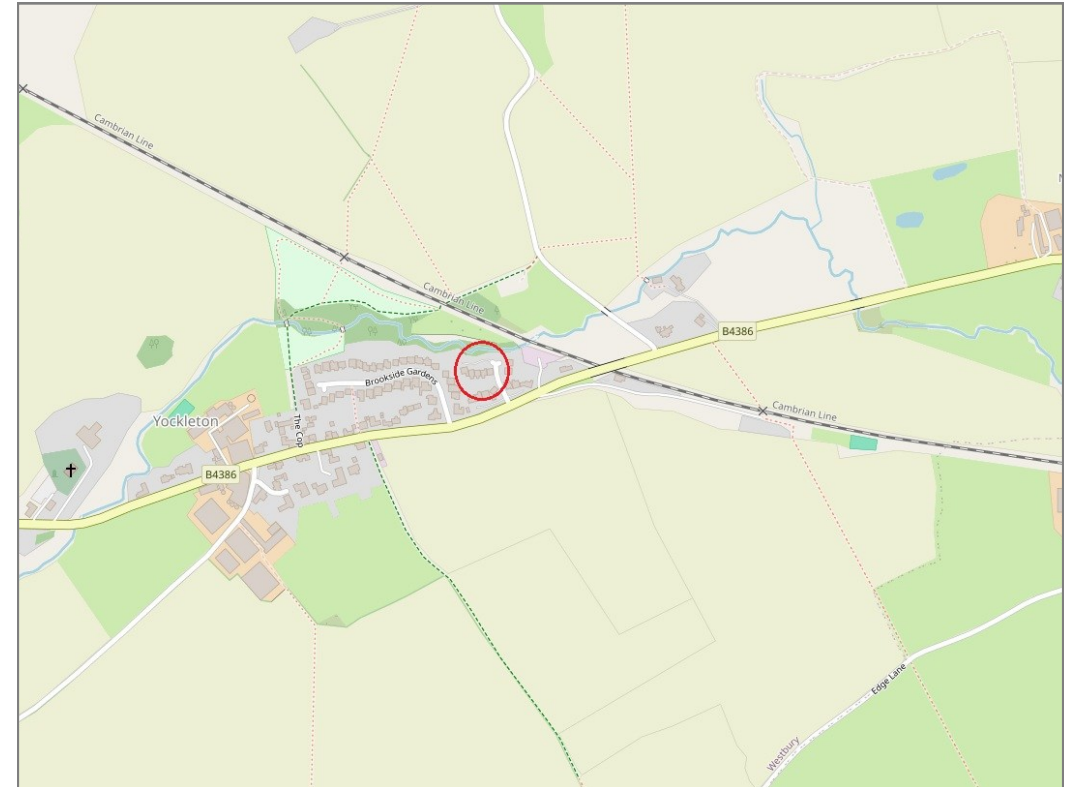
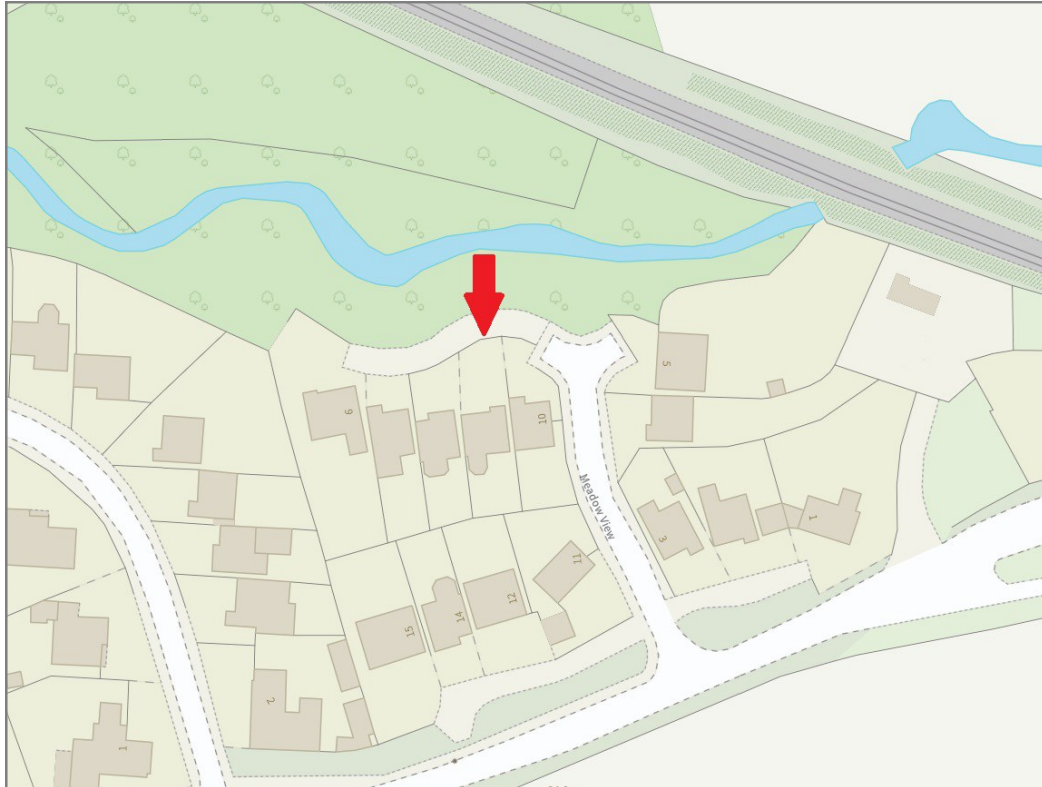
Offers in the region of £392,000 Freehold—4 bedroom detached house

[sales@cgpooks.co.uk](mailto:sales@cgpooks.co.uk)

rightmove 

 onTheMarket.com

 **RICS**  
Regulated by RICS



**BOUNDARIES NOT CONFIRMED**

Tenure	<b>Freehold</b>
Local Authority	<b>Shropshire Council</b>
Council Tax	<b>Band E</b>
EPC Band	<b>Band C</b>
Services	<b>All mains services are connected</b>

 **Expert mortgage advice available**

3 Barker St, Shrewsbury SY1 1QF

**Cooper Green Pooks**  
**01743 276666**



Your home may be repossessed if you do not keep up repayments on your mortgage.

There may be a fee for mortgage advice. The actual amount you pay will depend upon your circumstances. The fee is up to 1% but a typical fee is 0.3% of the amount borrowed.

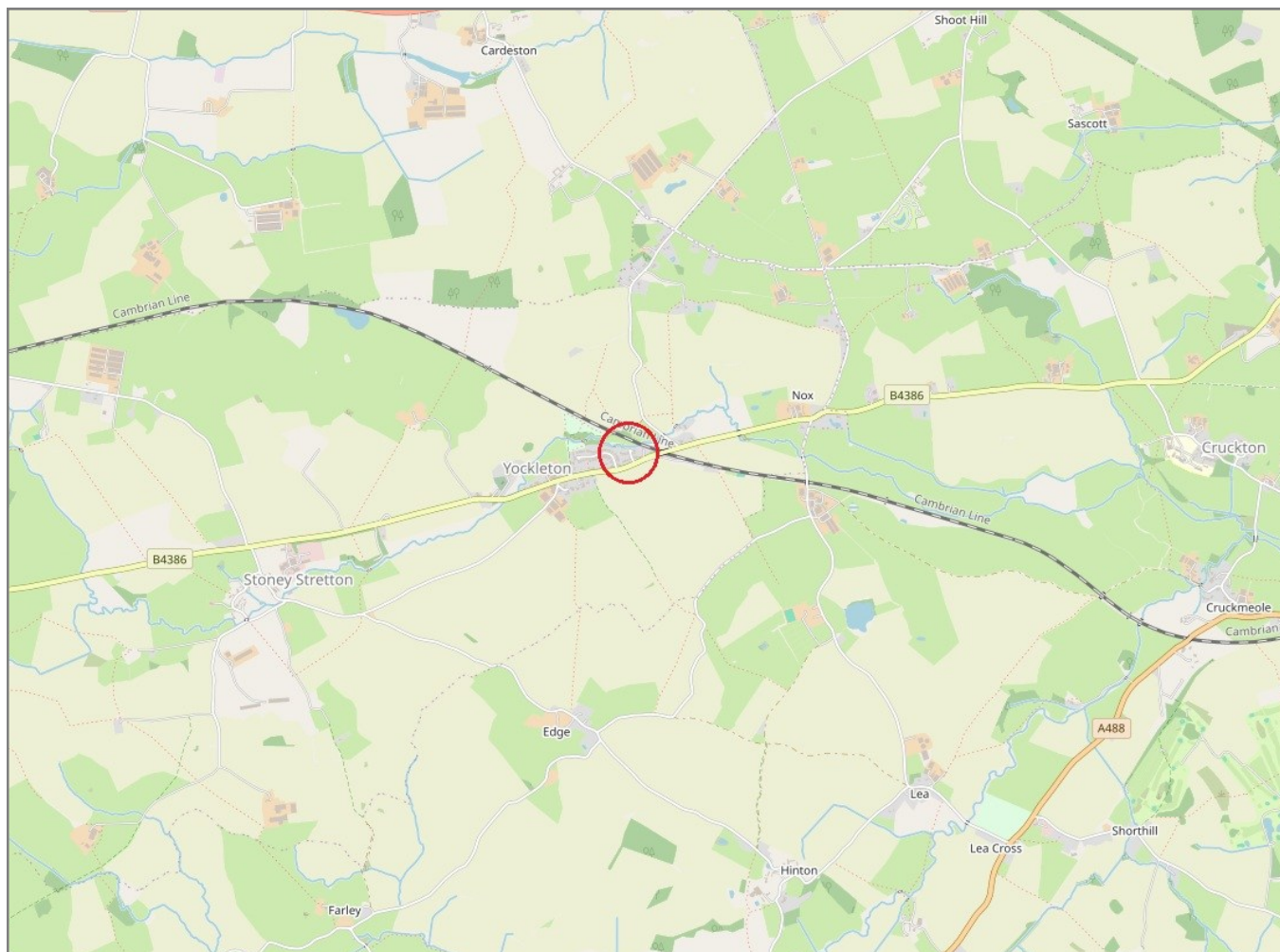


## 9 Meadow View, Yockleton, Shrewsbury, SY5 9PA

Coopergreenpooks.co.uk

Offers in the region of £392,000 Freehold—4 bedroom detached house

[sales@cgpooks.co.uk](mailto:sales@cgpooks.co.uk)



**IMPORTANT NOTICE:** Cooper Green Pooks for themselves and for the lessors or vendors of this property whose agents they are give notice that: 1 No appliances, services or service installations have been tested and no warranty as to suitability or serviceability is implied. Any prospective purchaser or lessee is advised to obtain verification from their surveyor or solicitor. 2. The particulars are set out as a general outline only for the guidance of the intended purchasers or lessees and do not constitute, nor constitute part of, an offer or contract. 3. All descriptions, reference to condition and necessary permissions for use and occupation and other details are given in good faith and are believed to be correct but any intending purchasers or lessees should not rely on them as statements or representation of fact but satisfy themselves by inspection or otherwise as to the correctness of each of them. 4. No person in the employment of Cooper Green Pooks has any authority to make or give any representation or warranty whatsoever in relation to this property. 5. All rentals and prices are quoted exclusive of Stamp Duty, legal and surveyors fees and any other associated purchasers or lessees costs. 6. Floor plans are indicative only and should not be relied on. 7. The plan showing the boundary of the property is indicative only and has not been checked against the legal title so should not be relied on. 8. All dimensions, floor areas and site areas are only approximate and should not be relied on. Dimensions are generally maximum room dimension.