



12 Peace Cottages, Old Coleham, Shrewsbury SY3 7BT

2 bedroom end of terrace house—£210,000 Freehold

12 Peace Cottages, Old Coleham, Shrewsbury SY3 7BT

£210,000 Freehold—2 bedroom end of terrace house

sales@cgpooks.co.uk

Situated within a quiet and convenient location, just a short walk from the Quarry Park and Town Centre, this attractive end-terrace property of character offers well-proportioned and neatly presented accommodation over three floors, while benefitting from a private rear garden and potential for off street parking.

KEY FEATURES

- Living room with feature fireplace and window to front
- Fitted kitchen with integrated oven and hob, space for appliances, useful under stairs storage and part glazed door to the rear garden
- On the first floor are two bedrooms and a well-appointed family bathroom
- A staircase leads from bedroom two up to a good sized second floor master bedroom, which has built in cupboards and eaves storage
- Gas fired central heating via a Worcester Bosch combi boiler
- Private garden, paved and gravelled for easy maintenance, with a brick-built store and gated access to the rear
- Off street parking could easily be created by changing the position of the back fence, leaving plenty of garden and allowing vehicular access off the lane
- The property has recently been re-decorated throughout and re-carpeted across the first two floors, with potential for further modernisation or extension if required
- Sold vacant with no upward chain

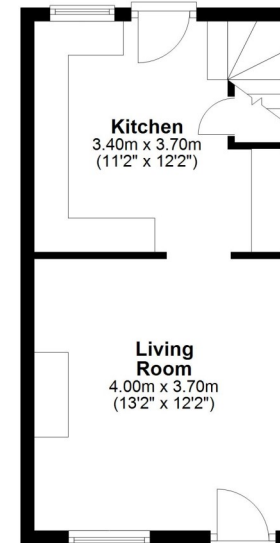
Cooper Green Pooks
3 Barker Street
Shrewsbury
SY1 1QF

www.cgpooks.co.uk
sales@cgpooks.co.uk
01743 276666

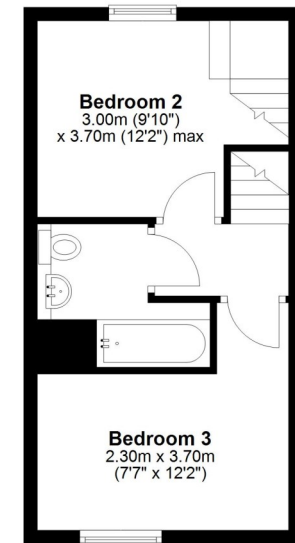


Coopergreenpooks.co.uk

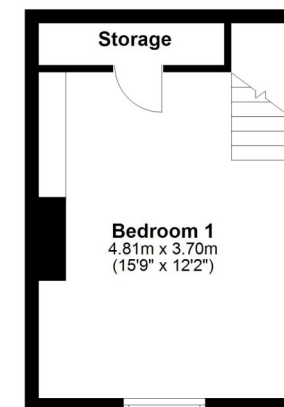
Ground Floor
Approx. 27.8 sq. metres (298.9 sq. feet)



First Floor
Approx. 27.8 sq. metres (298.9 sq. feet)



Second Floor
Approx. 20.4 sq. metres (220.1 sq. feet)



Total area: approx. 76.0 sq. metres (817.8 sq. feet)







12 Peace Cottages, Old Coleham, Shrewsbury SY3 7BT

£210,000 Freehold—2 bedroom end of terrace house

sales@cgpooks.co.uk

Coopergreenpooks.co.uk



Cooper Green Pooks
3 Barker Street
Shrewsbury
SY1 1QF

www.cgpooks.co.uk
sales@cgpooks.co.uk
01743 276666



rightmove

onTheMarket.com

RICS
Regulated by RICS

12 Peace Cottages, Old Coleham, Shrewsbury SY3 7BT

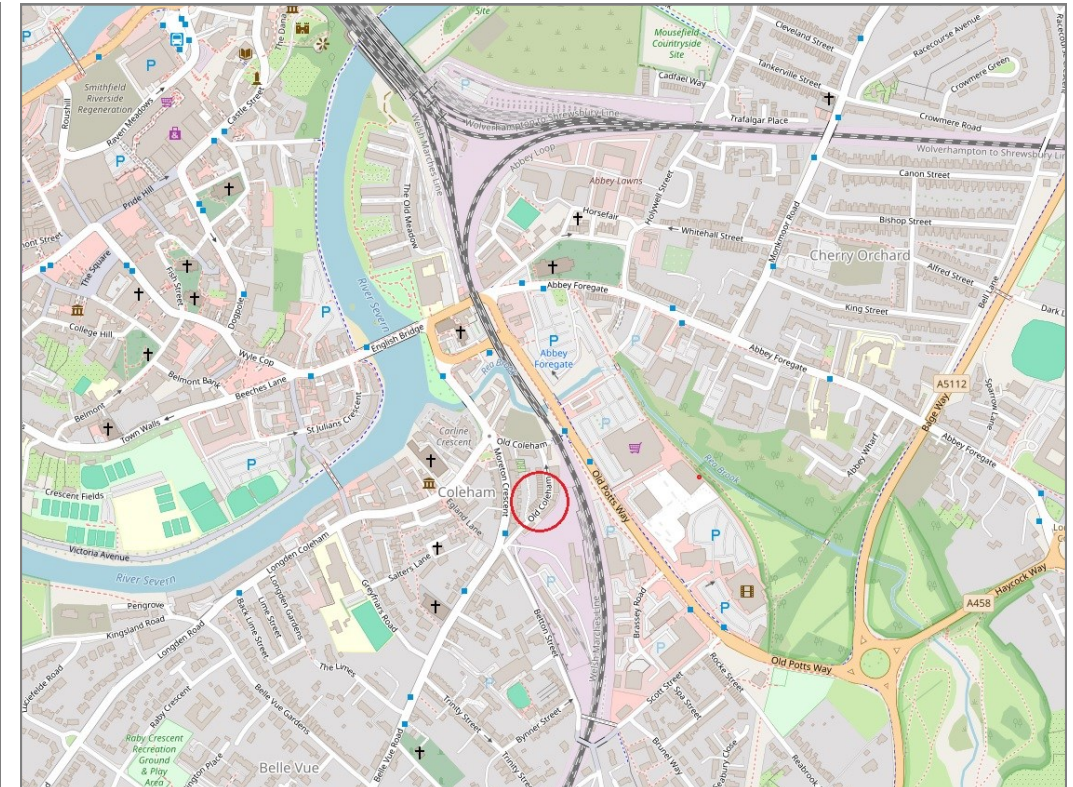
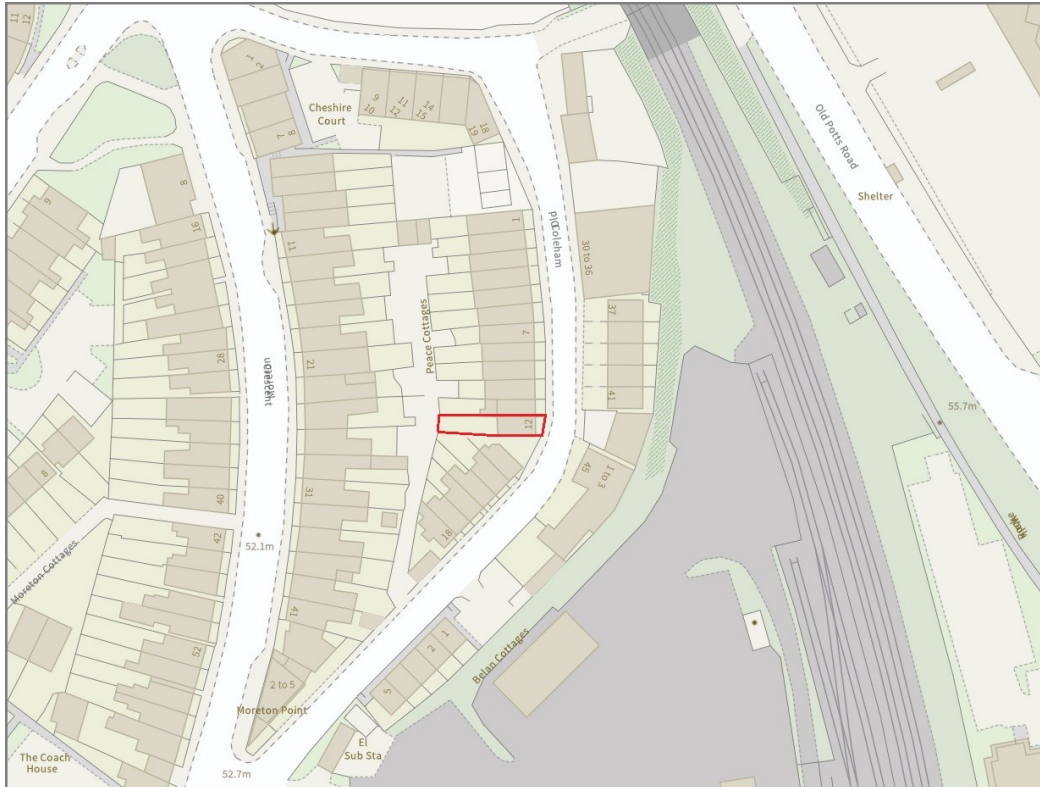
£210,000 Freehold—2 bedroom end of terrace house

sales@cgpooks.co.uk

rightmove

onTheMarket.com

RICS
Regulated by RICS



BOUNDARIES NOT CONFIRMED

Tenure	Freehold
Local Authority	Shropshire Council
Council Tax	Band B
EPC Band	TBC
Services	All mains services are connected

Expert mortgage advice available

3 Barker St, Shrewsbury SY1 1QF

Cooper Green Pooks
01743 276666



Your home may be repossessed if you do not keep up repayments on your mortgage.

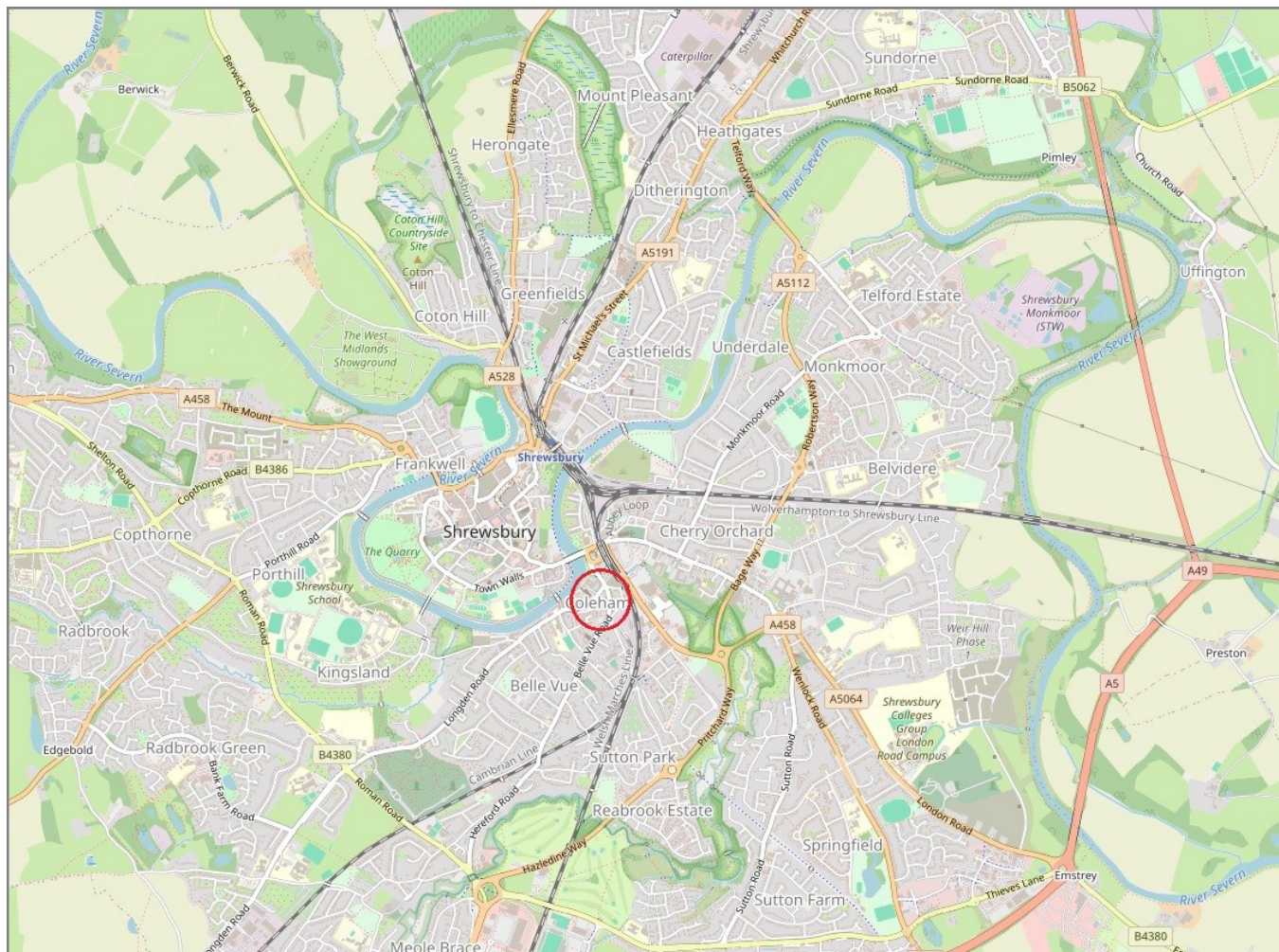
There may be a fee for mortgage advice. The actual amount you pay will depend upon your circumstances. The fee is up to 1% but a typical fee is 0.3% of the amount borrowed.

12 Peace Cottages, Old Coleham, Shrewsbury SY3 7BT

Coopergreenpooks.co.uk

£210,000 Freehold—2 bedroom end of terrace house

sales@cgpooks.co.uk



IMPORTANT NOTICE: Cooper Green Pooks for themselves and for the lessors or vendors of this property whose agents they are give notice that: 1 No appliances, services or service installations have been tested and no warranty as to suitability or serviceability is implied. Any prospective purchaser or lessee is advised to obtain verification from their surveyor or solicitor. 2. The particulars are set out as a general outline only for the guidance of the intended purchasers or lessees and do not constitute, nor constitute part of, an offer or contract. 3. All descriptions, reference to condition and necessary permissions for use and occupation and other details are given in good faith and are believed to be correct but any intending purchasers or lessees should not rely on them as statements or representation of fact but satisfy themselves by inspection or otherwise as to the correctness of each of them. 4. No person in the employment of Cooper Green Pooks has any authority to make or give any representation or warranty whatsoever in relation to this property. 5. All rentals and prices are quoted exclusive of Stamp Duty, legal and surveyors fees and any other associated purchasers or lessees costs. 6. Floor plans are indicative only and should not be relied on. 7. The plan showing the boundary of the property is indicative only and has not been checked against the legal title so should not be relied on. 8. All dimensions, floor areas and site areas are only approximate and should not be relied on. Dimensions are generally maximum room dimension.