

32 Millmead, Sutton Road, Shrewsbury, SY2 6DR  
£600 Per Month



32 Millmead, Sutton Road, Shrewsbury, SY2 6DR

**£600 Per Month**

VIRTUAL TOUR AVAILABLE - Refurbished one bedroom second floor flat in a converted Edwardian School building situated in a quiet residential area a short distance from Shrewsbury town centre. Includes allocated parking.

Available: 24/07/25

## Description

Comprising: Communal entrance hall, stairs to second floor, private entrance lobby, attractive open plan living room with modern kitchen area including built in oven & hob, Juliet balcony with extensive views and store cupboard, double bedroom including wardrobe, ensuite shower room. Use of communal laundry room and attractive professionally maintained gardens. Gas central heating, double glazing. Allocated parking space. EPC D

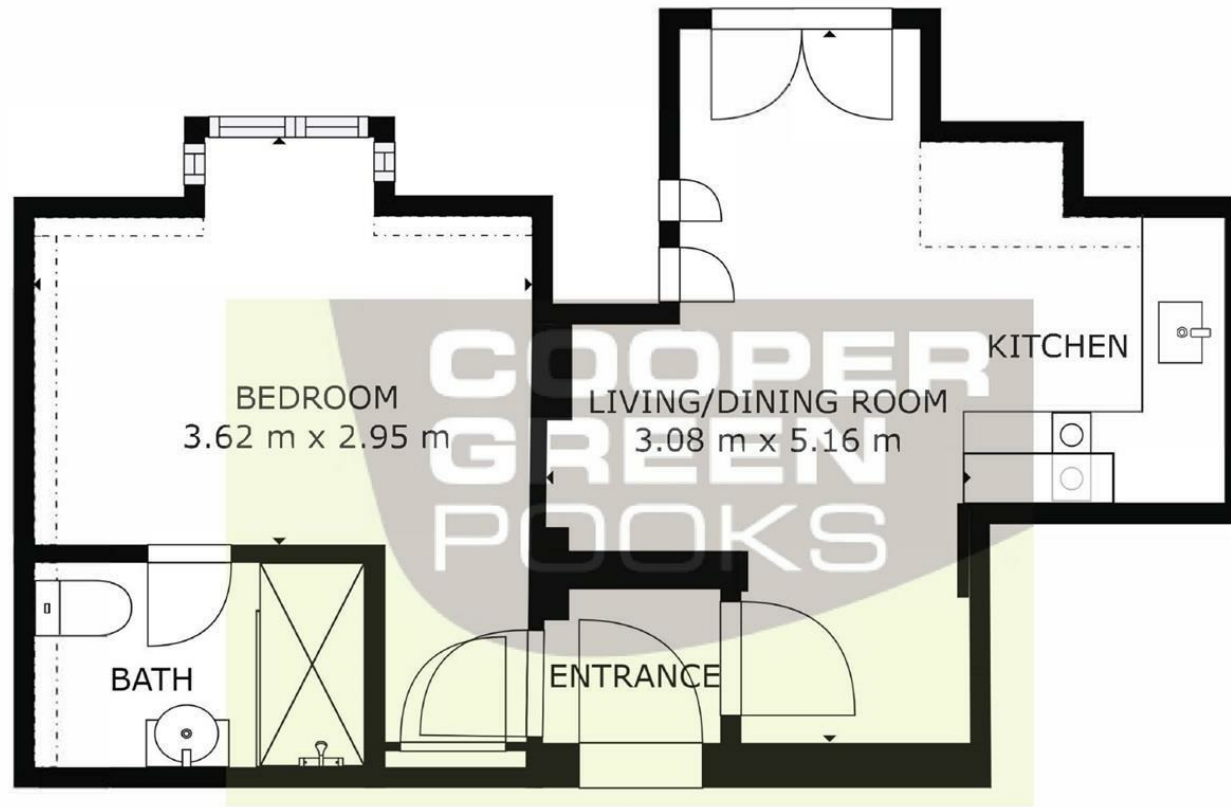
Unfurnished

Council Tax Band: A

Available: 24th July 2025

EPC: D

## Floor Plans



FLOOR 1

GROSS INTERNAL AREA  
FLOOR 1: 31 m<sup>2</sup>, EXCLUDED AREAS:  
REDUCED HEADROOM BELOW 1.5M: 2 m<sup>2</sup>  
TOTAL: 31 m<sup>2</sup>  
SIZES AND DIMENSIONS ARE APPROXIMATE, ACTUAL MAY VARY.



These particulars, whilst believed to be accurate are set out as a general outline only for guidance and do not constitute any part of an offer or contract. Intending purchasers should not rely on them as statements of representation of fact, but must satisfy themselves by inspection or otherwise as to their accuracy. No person in this firm's employment has the authority to make or give any representation or warranty in respect of the property.