

5, Watchcote, Herongate, Shrewsbury, SY1 3YX  
£850 Per Month





5, Watchcote, Herongate, Shrewsbury, SY1 3YX

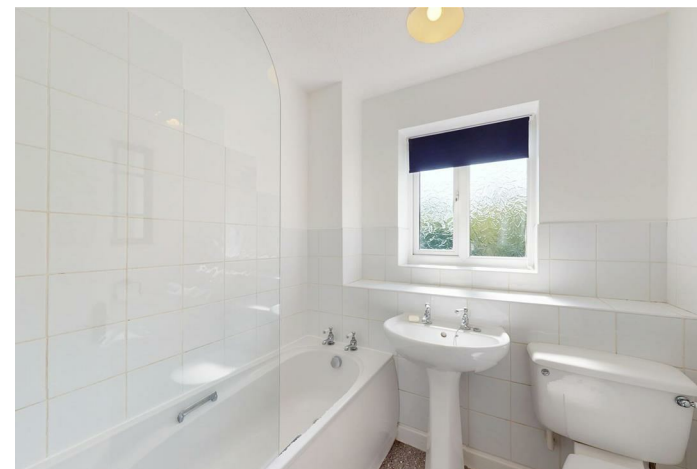
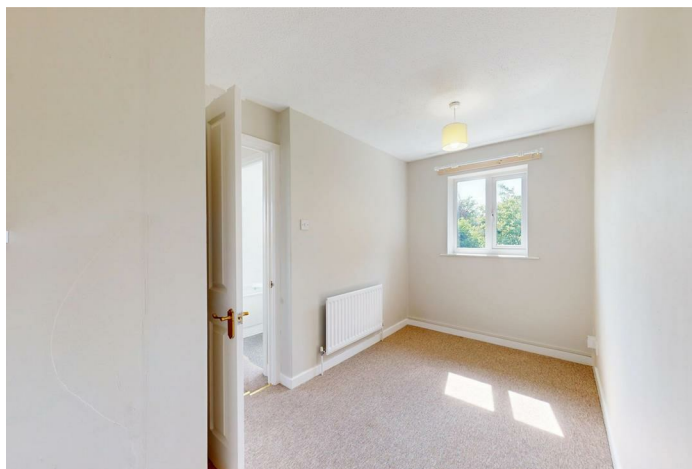
**£850 Per Month**

VIRTUAL TOUR AVAILABLE: Modern two bedroom semi-detached house situated within a quiet and popular cul-de-sac to the north of Shrewsbury town centre. Benefits from driveway parking for two cars and a south facing rear garden including large shed.

Available: Immediately

## Description

Comprising: Entrance lobby, living room, kitchen including ample storage and freestanding cooker, door to rear. Upstairs to first floor landing including airing cupboard, bathroom including shower, master bedroom, further bedroom. Gas central heating, double glazing. Front and rear garden, including shed. Driveway parking for two cars. EPC C



Unfurnished

Council Tax Band: B

Available: 16th June 2025

EPC: C

Floor Plans



These particulars, whilst believed to be accurate are set out as a general outline only for guidance and do not constitute any part of an offer or contract. Intending purchasers should not rely on them as statements of representation of fact, but must satisfy themselves by inspection or otherwise as to their accuracy. No person in this firms employment has the authority to make or give any representation or warranty in respect of the property.