



3, The Square, Pontesford, Shrewsbury, SY5 0UE
£1,350 Per Month



3, The Square, Pontesford, Shrewsbury, SY5 0UE

£1,350 Per Month

This very attractive three bedroom detached cottage has recently been extensively improved, thoughtfully re-designed and finished to an exceptionally high standard throughout, while retaining many characterful features. The property occupies a lovely quiet setting on the fringe of a poplar village, benefitting from an established private garden and driveway providing plenty of parking.

Available from: IMMEDIATELY

Description

Comprising: Entrance porch opening to both the living and dining areas, with a staircase to a light and spacious landing, impressive open plan kitchen/dining room with glazed double doors onto the rear garden, fitted units to the kitchen, complete with integrated appliances and island unit with induction hob and downdraft extractor, useful under stairs store/utility room connecting to the cloakroom, separate living room with views to front and built in cupboard, master bedroom and well-appointed en-suite shower room, a further two bedrooms, one large double and a single, and a family bathroom with shower. uPVC double glazed windows and gas fired central heating. Private landscaped rear garden, laid to lawn with paved terrace, planted borders and gated access to side. Driveway providing parking for multiple vehicles, as well as a fenced area with concrete base. A very quiet and convenient location, tucked away on the fringe of the village, a short distance from beautiful countryside walks, Pontesford Hill and less than a mile from Pontesbury's excellent range of amenities. Shrewsbury town centre is also less than a 15 minute drive



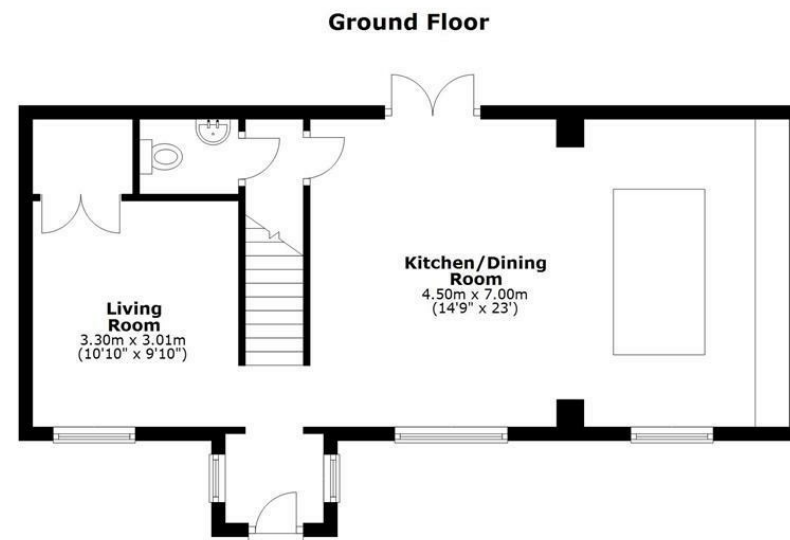
Unfurnished

Council Tax Band: D

Available: 13th June 2025

EPC: D

Floor Plans



We accept no responsibility for any mistake or inaccuracy contained within the floorplan. The floorplan is provided as a guide only and should be taken as an illustration only. The measurements, contents and positioning are approximations only and provided as a guidance tool and not an exact replication of the property.
Plan produced using PlanUp.

These particulars, whilst believed to be accurate are set out as a general outline only for guidance and do not constitute any part of an offer or contract. Intending purchasers should not rely on them as statements of representation of fact, but must satisfy themselves by inspection or otherwise as to their accuracy. No person in this firm's employment has the authority to make or give any representation or warranty in respect of the property.