



16 John Street, Castlefields, Shrewsbury SY1 2RZ

2 bedroom terraced house—£192,000 Freehold

16 John Street, Castlefields, Shrewsbury SY1 2RZ

£192,000 Freehold—2 bedroom terraced house

sales@cgpooks.co.uk

A well-presented mid terraced house with a south facing rear garden, located on a quiet street within the popular Castlefield's area, just a short walk from the town centre.

KEY FEATURES

- Recently redecorated throughout, along with replacement double glazed windows and gas fired central heating.
- Good sized open plan living and dining areas with feature chimney breasts.
- Seperate fitted kitchen which has tiled flooring and glazed sliding doors to the rear garden.
- Ground floor shower room with large walk-in shower and separate wc.
- Staircase from dining area to the first-floor landing where there are 2 bedrooms, both with built in storage.
- Private south facing rear garden which has been paved and gravelled for easy maintenance. There is also a garden store included in the sale.
- Well situated in a quiet residential area, a few minutes' walk from the local store, and no more than a 10-minute walk to the railway station and town centre.
- Ideal for a first-time buyer or investor.
- No onward chain.

Cooper Green Pooks
3 Barker Street
Shrewsbury
SY1 1QF

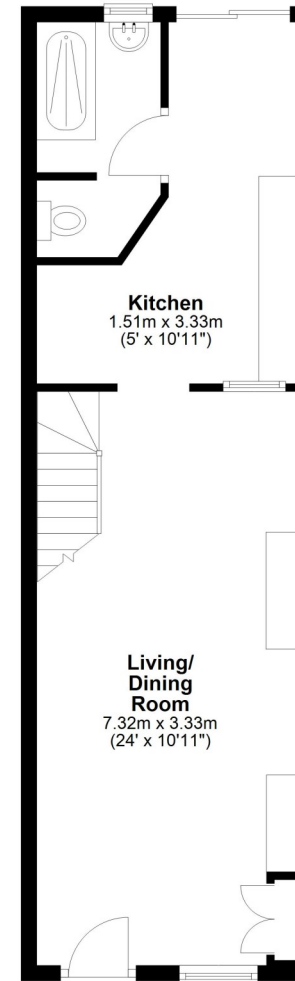
www.cgpooks.co.uk
sales@cgpooks.co.uk
01743 276666



Coopergreenpooks.co.uk

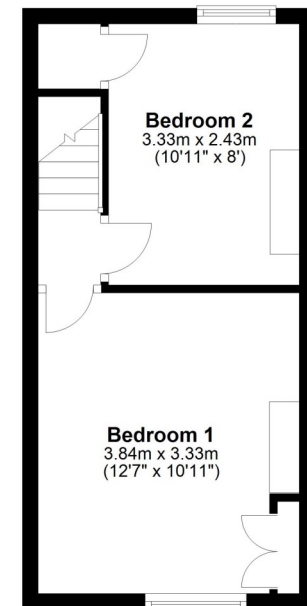
Ground Floor

Approx. 40.1 sq. metres (431.5 sq. feet)



First Floor

Approx. 24.2 sq. metres (260.6 sq. feet)



Total area: approx. 64.3 sq. metres (692.1 sq. feet)





16 John Street, Castlefields, Shrewsbury SY1 2RZ

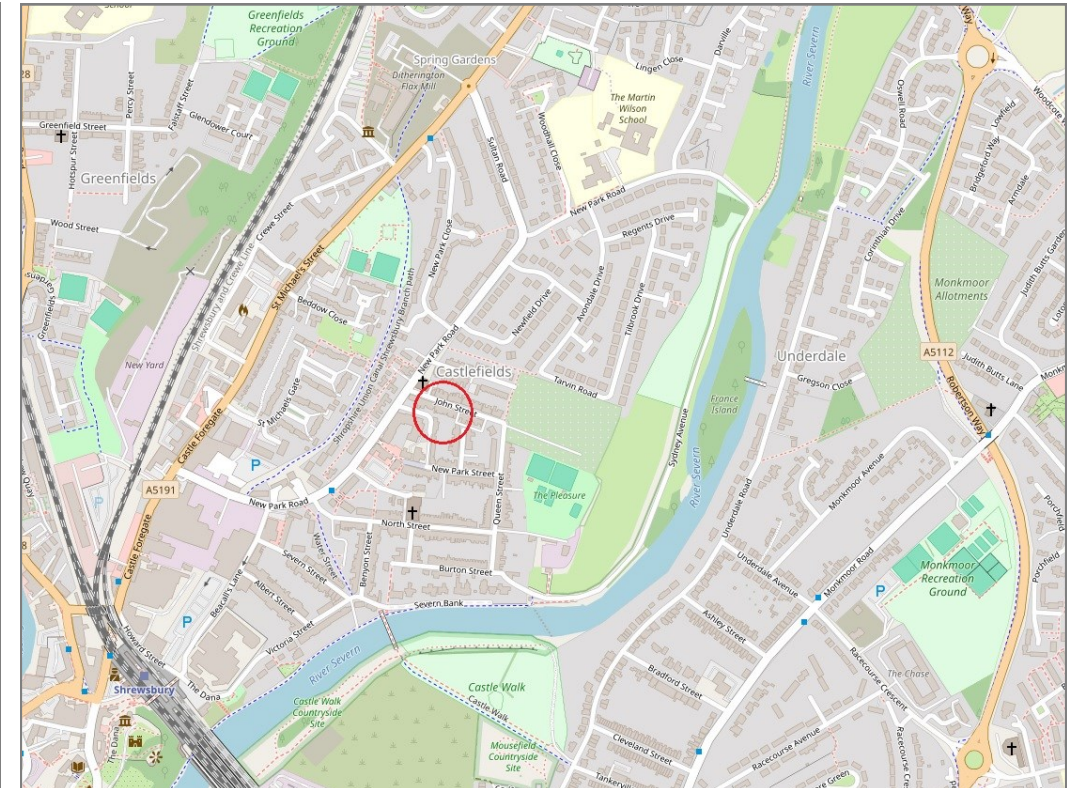
£192,000 Freehold—2 bedroom terraced house

sales@cgpooks.co.uk

rightmove

onTheMarket.com

RICS
Regulated by RICS



BOUNDARIES NOT CONFIRMED

Tenure	Freehold
Local Authority	Shropshire Council
Council Tax	Band B
EPC Band	Band C
Services	All mains services are connected

Expert mortgage advice available

3 Barker St, Shrewsbury SY1 1QF

Cooper Green Pooks
01743 276666



Your home may be repossessed if you do not keep up repayments on your mortgage.

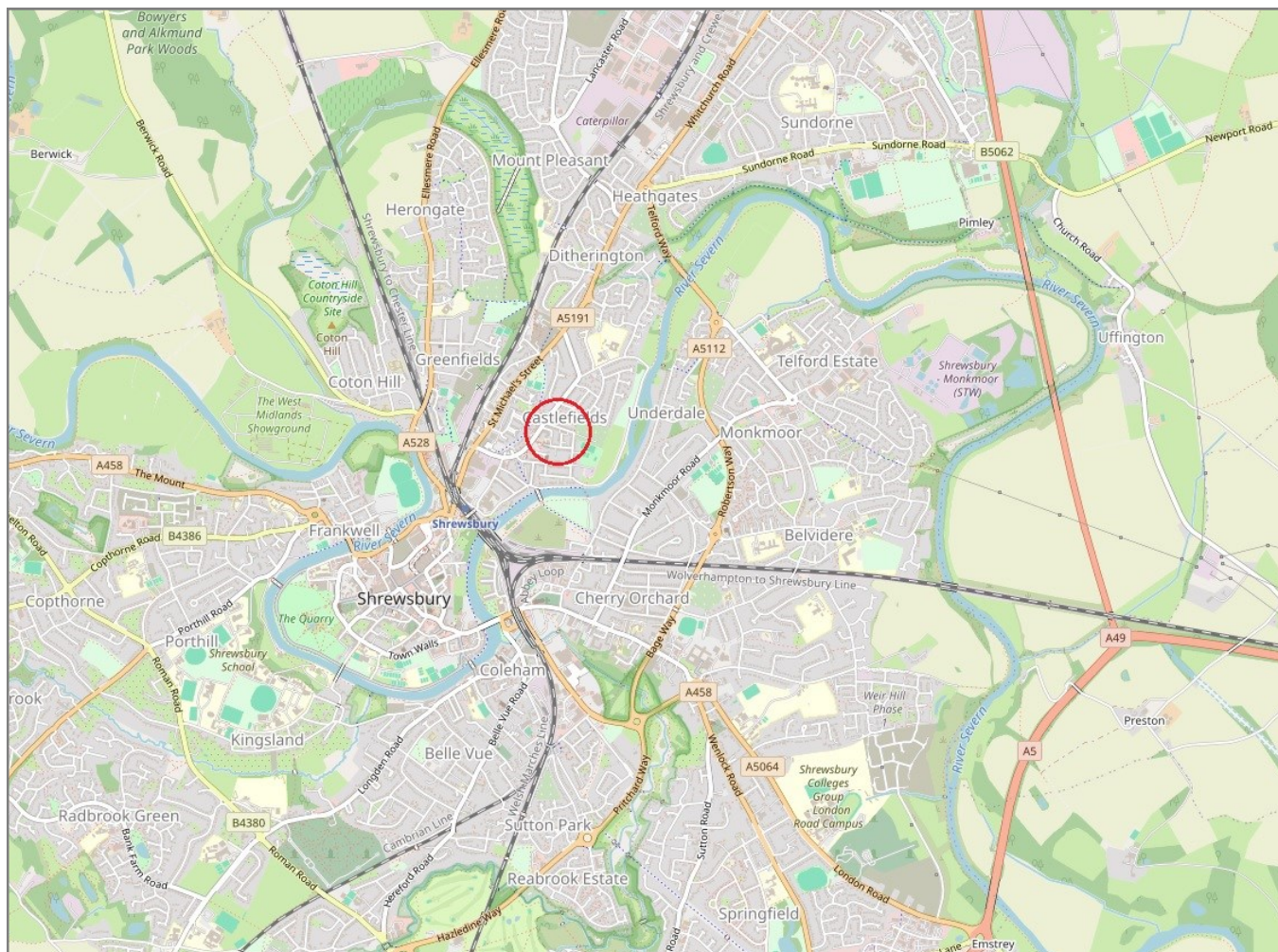
There may be a fee for mortgage advice. The actual amount you pay will depend upon your circumstances. The fee is up to 1% but a typical fee is 0.3% of the amount borrowed.

16 John Street, Castlefields, Shrewsbury SY1 2RZ

Coopergreenpooks.co.uk

£192,000 Freehold—2 bedroom terraced house

sales@cgpooks.co.uk



IMPORTANT NOTICE: Cooper Green Pools for themselves and for the lessors or vendors of this property whose agents they are give notice that: 1 No appliances, services or service installations have been tested and no warranty as to suitability or serviceability is implied. Any prospective purchaser or lessee is advised to obtain verification from their surveyor or solicitor. 2. The particulars are set out as a general outline only for the guidance of the intended purchasers or lessees and do not constitute, nor constitute part of, an offer or contract. 3. All descriptions, reference to condition and necessary permissions for use and occupation and other details are given in good faith and are believed to be correct but any intending purchasers or lessees should not rely on them as statements or representation of fact but satisfy themselves by inspection or otherwise as to the correctness of each of them. 4. No person in the employment of Cooper Green Pools has any authority to make or give any representation or warranty whatsoever in relation to this property. 5. All rentals and prices are quoted exclusive of Stamp Duty, legal and surveyors fees and any other associated purchasers or lessees costs. 6. Floor plans are indicative only and should not be relied on. 7. The plan showing the boundary of the property is indicative only and has not been checked against the legal title so should not be relied on. 8. All dimensions, floor areas and site areas are only approximate and should not be relied on. Dimensions are generally maximum room dimension.