



105, Gardeners Place, Sutton Grange, Shrewsbury, SY2 6FH
£900 Per Month



105, Gardeners Place, Sutton Grange, Shrewsbury, SY2 6FH

£900 Per Month

VIRTUAL TOUR AVAILABLE: This two bedroom end-terrace house is well maintained and quietly positioned. The property is situated within this popular modern development on Oteley Road, a short distance from excellent amenities, road links and less than three miles from Shrewsbury town centre.

Available: 25/07/25

Description

Comprising: Entrance hall with WC, kitchen with integrated appliances including oven and gas hob, fridge freezer, washer dryer and slimline dishwasher, living dining room with under stairs cupboard and glazed double doors to rear. Stairs to landing, two double bedrooms and bathroom with shower over head. Rear garden with artificial grass, patio and side access to front of property. Double Glazing. Gas Central Heating. Two allocated parking spaces at the front of property. EPC B.



Unfurnished

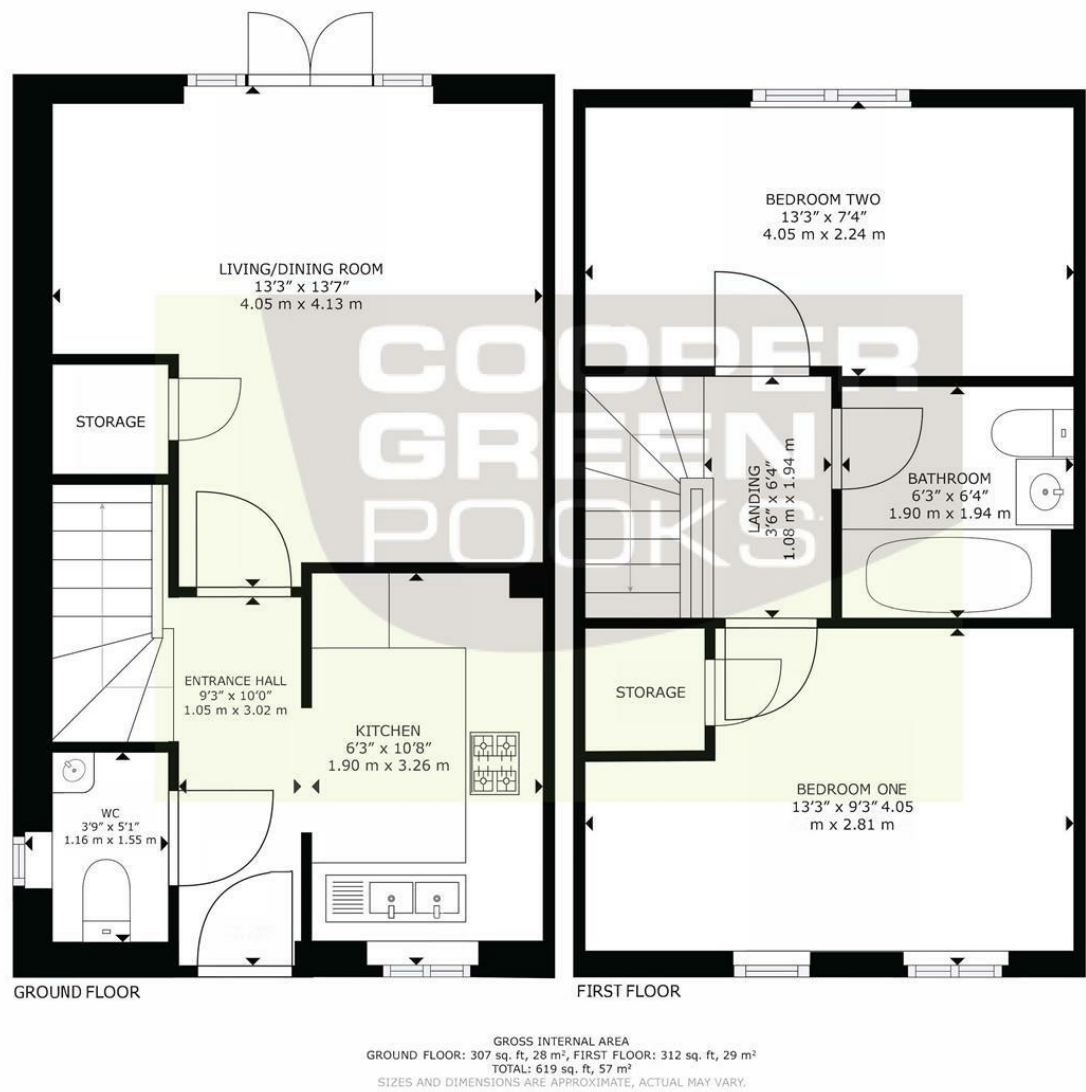
Council Tax Band: B

Available: 25th July 2025

EPC: B



Floor Plans



These particulars, whilst believed to be accurate are set out as a general outline only for guidance and do not constitute any part of an offer or contract. Intending purchasers should not rely on them as statements of representation of fact, but must satisfy themselves by inspection or otherwise as to their accuracy. No person in this firms employment has the authority to make or give any representation or warranty in respect of the property.