



85 Bishop Street, Cherry Orchard, Shrewsbury SY2 5EZ

5 bedroom terraced house—£395,000 Freehold

85 Bishop Street, Cherry Orchard, Shrewsbury SY2 5EZ

£395,000 Freehold—5 bedroom terraced house

sales@cgpooks.co.uk

Situated within a sought-after residential area, walking distance from the town centre, this very attractive terraced house of character offers substantial, well-proportioned, and versatile accommodation over four floors, while benefitting from a lovely south facing private rear garden.

KEY FEATURES

- Covered entrance opening to an inner hallway with original quarry tiled flooring and turning staircase to a spacious landing
- Two good sized reception rooms with feature fireplaces, the dining room also has a bay window to front
- Kitchen with a range of fitted units and door to the separate utility, which has access to the garden. These rooms could be knocked into one, creating a fantastic open plan space
- A very useful cellar is accessed from the living room and provides excellent storage
- On the first floor are three bedrooms, two doubles and a generous single, and a well-appointed family bathroom
- A second staircase leads to the converted loft where there are two further bedrooms, currently used as a hobbies room and additional storage
- Lovely part-walled south facing garden, laid to lawn with paved sun terrace
- To the front of the property is a gated pathway and adjoining courtyard garden
- Quietly situated within a superb location, a short walk from some excellent amenities, primary and secondary schools, as well as being less than a mile from the town centre

Cooper Green Pooks
3 Barker Street
Shrewsbury
SY1 1QF
www.cgpooks.co.uk
sales@cgpooks.co.uk
01743 276666

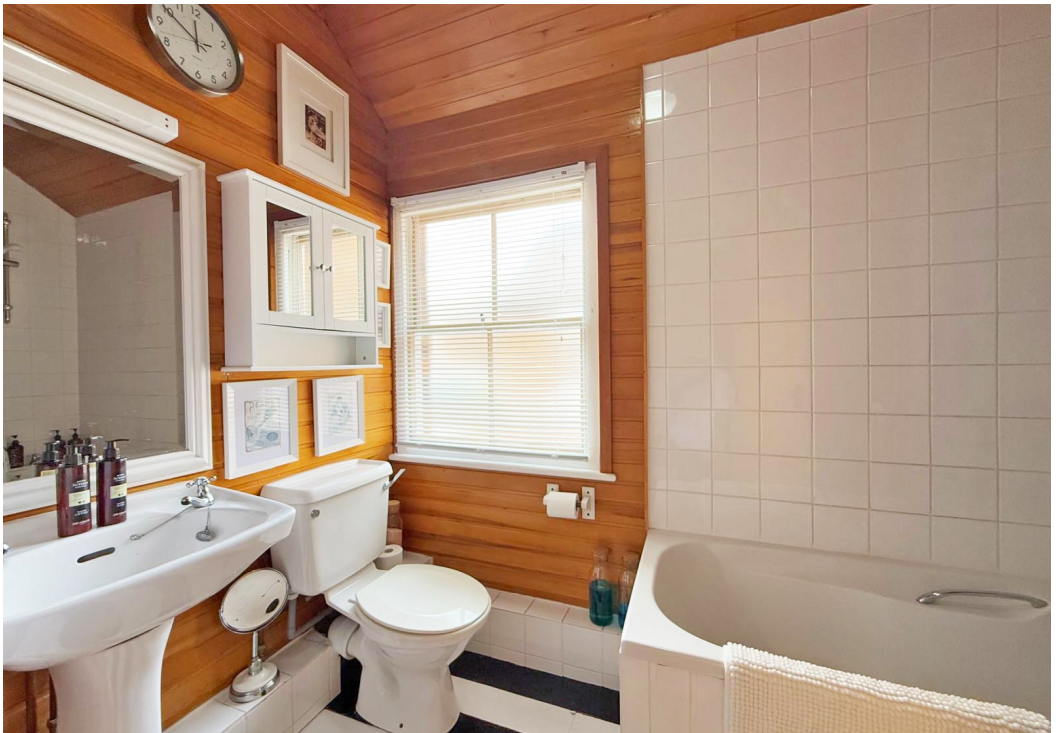


Coopergreenpooks.co.uk









85 Bishop Street, Cherry Orchard, Shrewsbury SY2 5EZ

Coopergreenpooks.co.uk

£395,000 Freehold—5 bedroom terraced house

sales@cgpooks.co.uk



Cooper Green Pooks
3 Barker Street
Shrewsbury
SY1 1QF

www.cgpooks.co.uk
sales@cgpooks.co.uk
01743 276666



rightmove

onTheMarket.com

RICS
Regulated by RICS

85 Bishop Street, Cherry Orchard, Shrewsbury SY2 5EZ

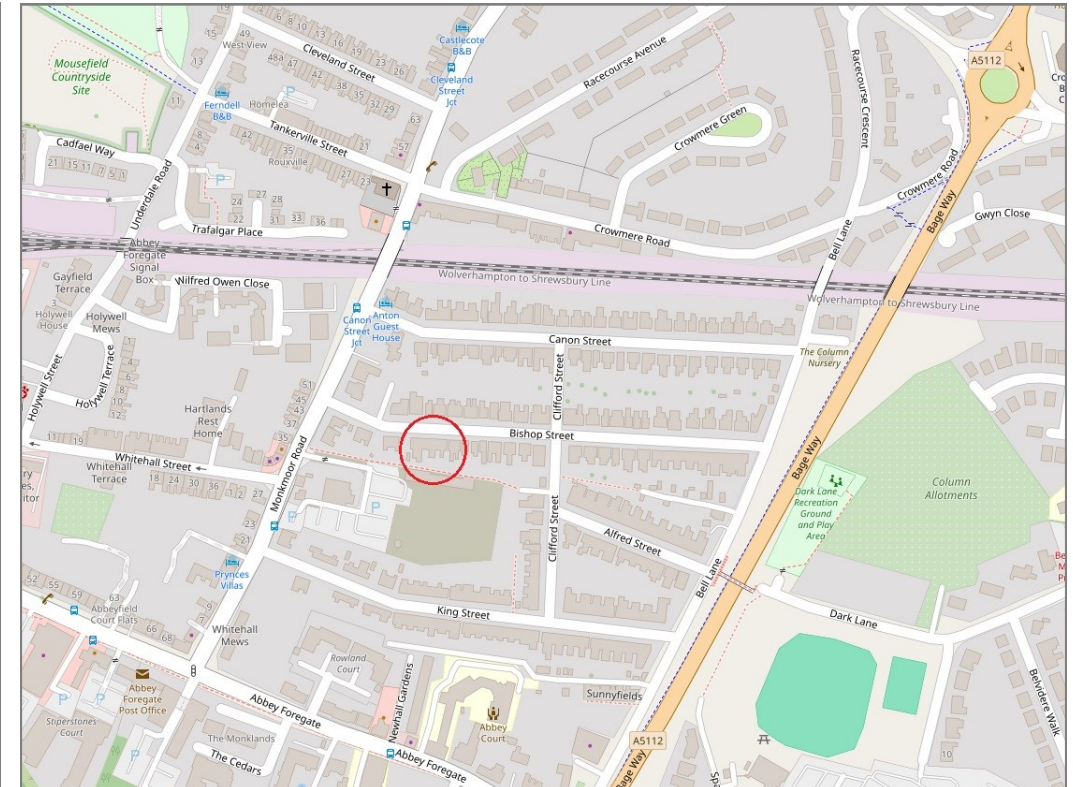
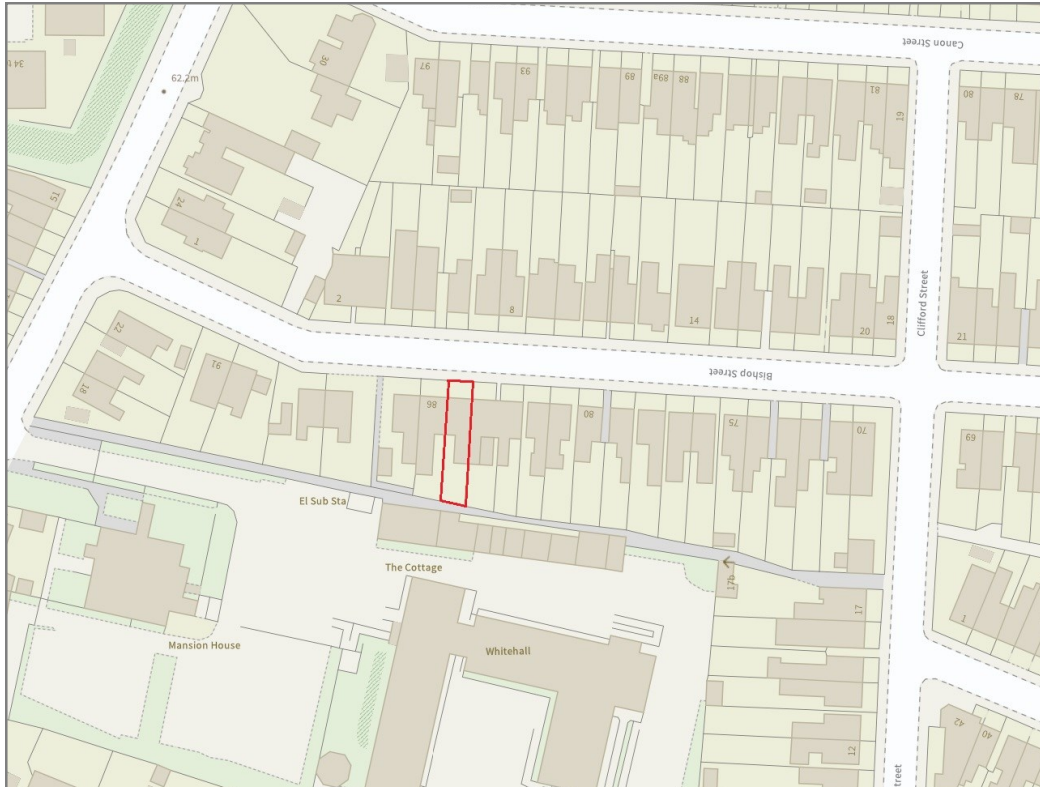
£395,000 Freehold—5 bedroom terraced house

sales@cgpooks.co.uk

rightmove

onTheMarket.com

RICS®
Regulated by RICS



BOUNDARIES NOT CONFIRMED

Tenure	Freehold
Local Authority	Shropshire Council
Council Tax	Band C
EPC Band	TBC
Services	All mains services are connected

Expert mortgage advice available

3 Barker St, Shrewsbury SY1 1QF

Cooper Green Pooks
01743 276666



Your home may be repossessed if you do not keep up repayments on your mortgage.

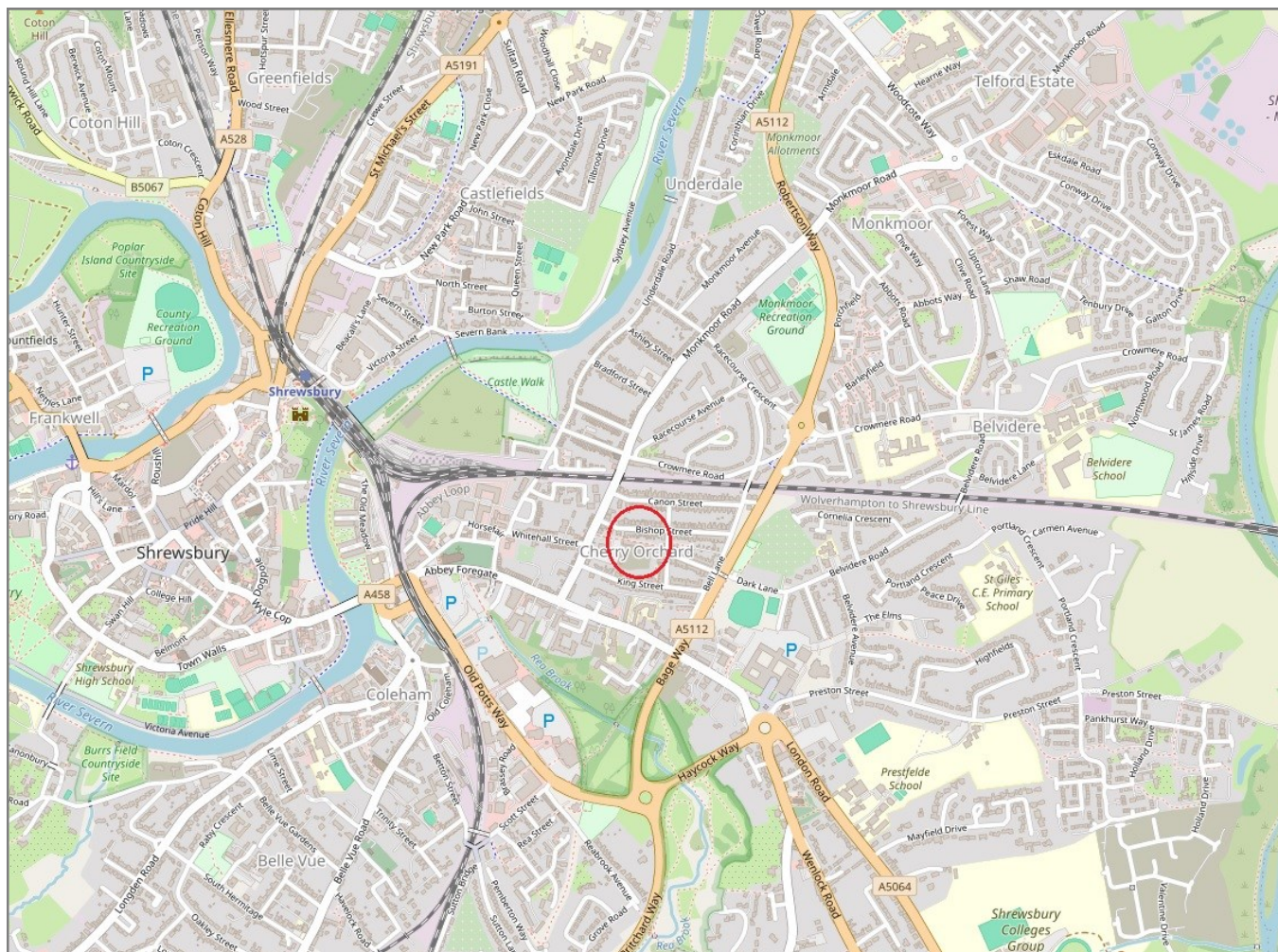
There may be a fee for mortgage advice. The actual amount you pay will depend upon your circumstances. The fee is up to 1% but a typical fee is 0.3% of the amount borrowed.

85 Bishop Street, Cherry Orchard, Shrewsbury SY2 5EZ

Coopergreenpooks.co.uk

£395,000 Freehold—5 bedroom terraced house

sales@cgpooks.co.uk



IMPORTANT NOTICE: Cooper Green Pooks for themselves and for the lessors or vendors of this property whose agents they are give notice that: 1 No appliances, services or service installations have been tested and no warranty as to suitability or serviceability is implied. Any prospective purchaser or lessee is advised to obtain verification from their surveyor or solicitor. 2. The particulars are set out as a general outline only for the guidance of the intended purchasers or lessees and do not constitute, nor constitute part of, an offer or contract. 3. All descriptions, reference to condition and necessary permissions for use and occupation and other details are given in good faith and are believed to be correct but any intending purchasers or lessees should not rely on them as statements or representation of fact but satisfy themselves by inspection or otherwise as to the correctness of each of them. 4. No person in the employment of Cooper Green Pooks has any authority to make or give any representation or warranty whatsoever in relation to this property. 5. All rentals and prices are quoted exclusive of Stamp Duty, legal and surveyors fees and any other associated purchasers or lessees costs. 6. Floor plans are indicative only and should not be relied on. 7. The plan showing the boundary of the property is indicative only and has not been checked against the legal title so should not be relied on. 8. All dimensions, floor areas and site areas are only approximate and should not be relied on. Dimensions are generally maximum room dimension.