



**6 Bromley Court, Copthorne Road, Shrewsbury, SY3 8NY**

1 bedroom apartment—£135,000 Leasehold



## 6 Bromley Court, Copthorne Road, Shrewsbury, SY3 8NY

Coopergreenpooks.co.uk

£135,000 Leasehold—1 bedroom apartment

sales@cgpooks.co.uk

Situated within a modern purpose built development, this neatly presented and well-designed ground floor apartment is conveniently located just a short walk from the town centre, while benefitting from private access to the lovely communal gardens, as well as secure underground parking.

### KEY FEATURES

- Good sized entrance hall with useful storage
- Open plan living/dining room with feature bay window to front
- Fitted kitchen with integrated oven/hob and space for appliances
- Large double bedroom with glazed door providing access to the communal gardens
- Separate well-appointed bathroom with shower
- uPVC double glazed windows and electric heating
- Residents laundry room with Miele washing machine and tumble dryers
- Landscaped communal grounds which are mainly lawned with paved seating areas
- Secure underground car park providing allocated parking and storage area
- A superb location, just a 10 minute walk from the Quarry Park and heart of the town centre
- Sold with no upward chain

Cooper Green Pooks

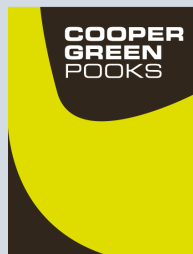
3 Barker Street

Shrewsbury

SY1 1QF

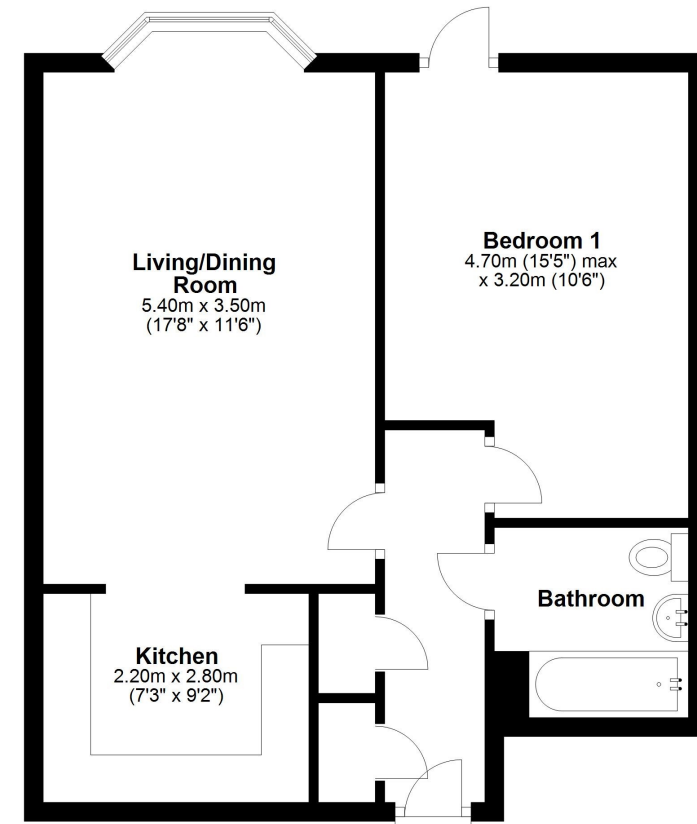
www.cgpooks.co.uk

sales@cgpooks.co.uk



### Ground Floor

Approx. 50.7 sq. metres (545.4 sq. feet)



Total area: approx. 50.7 sq. metres (545.4 sq. feet)

We accept no responsibility for any mistake or inaccuracy contained within the floorplan. The floorplan is provided as a guide only and should be taken as an illustration only. The measurements, contents and positioning are approximations only and provided as a guidance tool and not an exact replication of the property.

Plan produced using PlanUp.











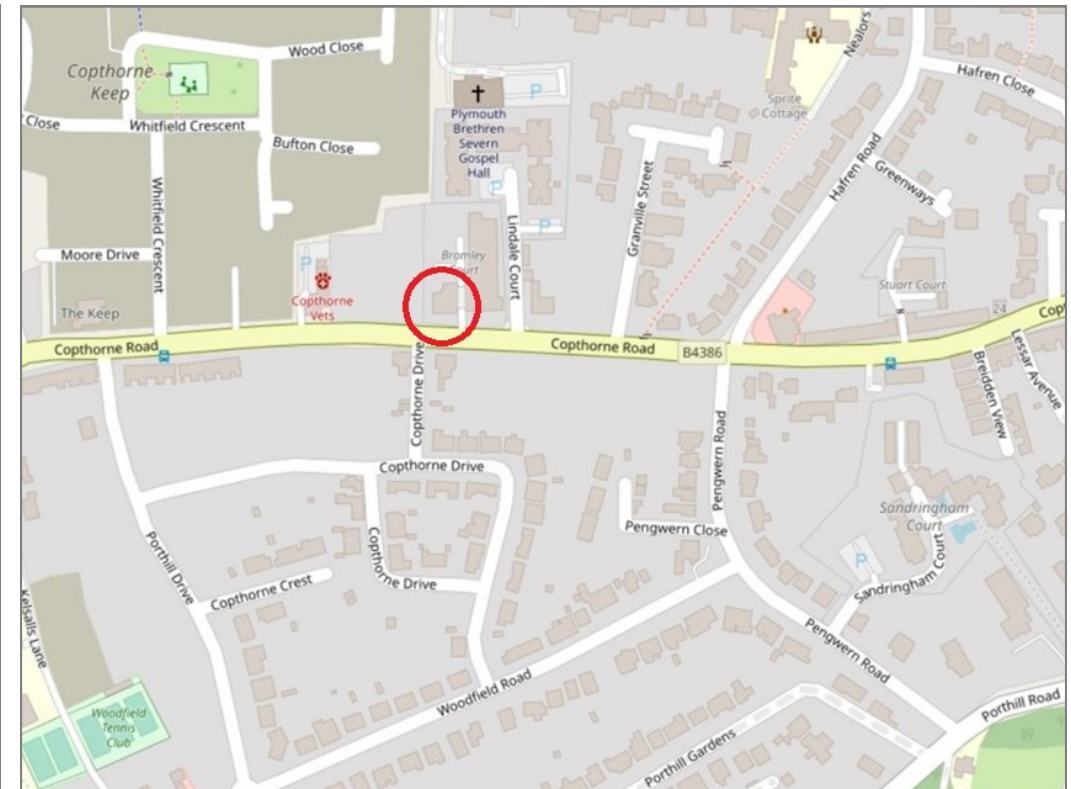




## 6 Bromley Court, Copthorne Road, Shrewsbury, SY3 8NY

£135,000 Leasehold—1 bedroom apartment

sales@cgpooks.co.uk



Tenure	Leasehold
Local Authority	Shropshire Council
Council Tax	Band A
EPC Band	Band C
Services	Mains electricity, drainage and water are connected
Lease Length	199 years from 2010
Service Charge	Approx. £2,274.50 PA

**Expert mortgage advice available**  
3 Barker St, Shrewsbury SY1 1QF  
**Cooper Green Pooks**  
**01743 276666**



Your home may be repossessed if you do not keep up repayments on your mortgage.  
There may be a fee for mortgage advice. The actual amount you pay will depend upon your circumstances. The fee is up to 1% but a typical fee is 0.3% of the amount borrowed.

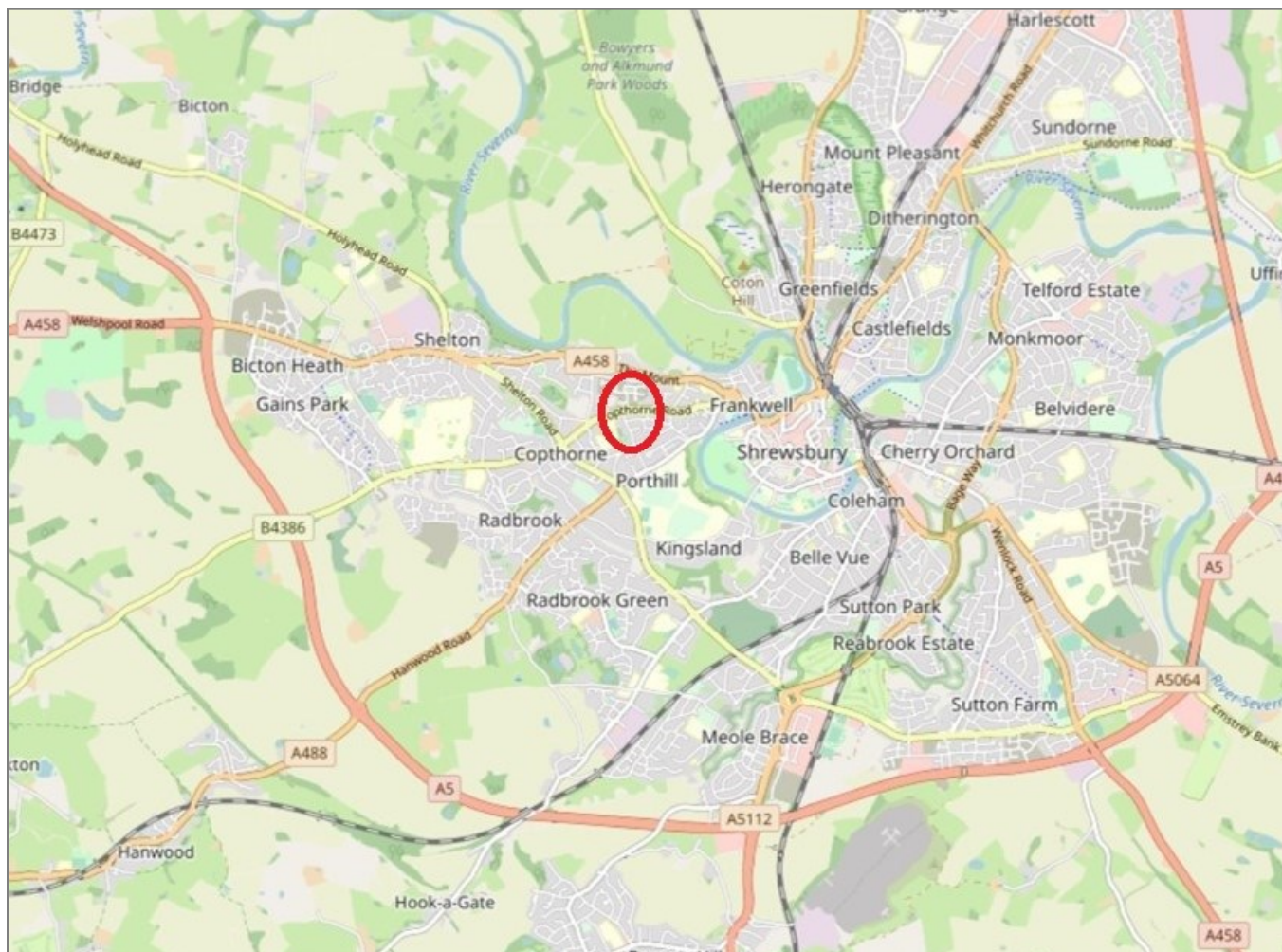


## 6 Bromley Court, Copthorne Road, Shrewsbury, SY3 8NY

Coopergreenpooks.co.uk

£135,000 Leasehold—1 bedroom apartment

sales@cgpooks.co.uk



**IMPORTANT NOTICE:** Cooper Green Pooks for themselves and for the lessors or vendors of this property whose agents they are give notice that: 1 No appliances, services or service installations have been tested and no warranty as to suitability or serviceability is implied. Any prospective purchaser or lessee is advised to obtain verification from their surveyor or solicitor. 2. The particulars are set out as a general outline only for the guidance of the intended purchasers or lessees and do not constitute, nor constitute part of, an offer or contract. 3. All descriptions, reference to condition and necessary permissions for use and occupation and other details are given in good faith and are believed to be correct but any intending purchasers or lessees should not rely on them as statements or representation of fact but satisfy themselves by inspection or otherwise as to the correctness of each of them. 4. No person in the employment of Cooper Green Pooks has any authority to make or give any representation or warranty whatsoever in relation to this property. 5. All rentals and prices are quoted exclusive of Stamp Duty, legal and surveyors fees and any other associated purchasers or lessees costs. 6. Floor plans are indicative only and should not be relied on. 7. The plan showing the boundary of the property is indicative only and has not been checked against the legal title so should not be relied on. 8. All dimensions, floor areas and site areas are only approximate and should not be relied on. Dimensions are generally maximum room dimension.