



Flat 4, 5/6, Fish Street, Shrewsbury, SY1 1UR
£450 Per Month



Flat 4, 5/6, Fish Street, Shrewsbury, SY1 1UR

£450 Per Month

VIRTUAL TOUR AVAILABLE - One bedroom second floor flat in the heart of Shrewsbury town centre on an historic side street.

Available: 04/07/25

Description

Comprising: Communal hallway with stairs to first floor entrance, further staircase to living area with views over St Alkmunds Church, small kitchen, bedroom with ensuite shower room.
EPC E



Unfurnished

Council Tax Band: A

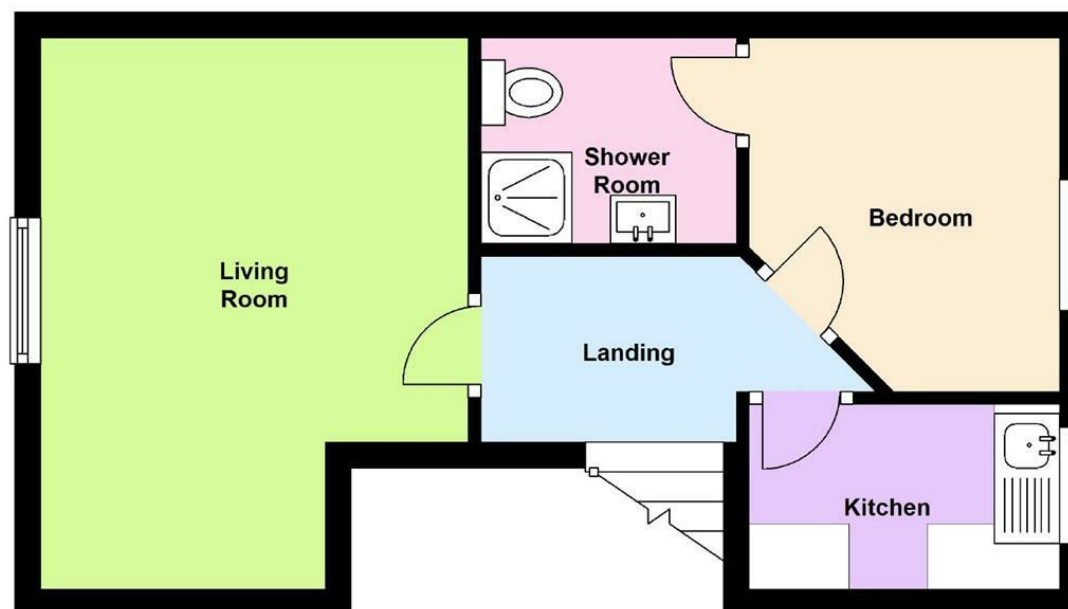
Available: 4th July 2025

EPC: E

Floor Plans

Second Floor

Approx. 29.4 sq. metres (316.3 sq. feet)



Total area: approx. 29.4 sq. metres (316.3 sq. feet)

We accept no responsibility for any mistake or inaccuracy contained within the floorplan. The floorplan is provided as a guide only and should be taken as an illustration only. The measurements, contents and positioning are approximations only and provided as a guidance tool and not an exact replication of the property.

Plan produced using PlanUp.

These particulars, whilst believed to be accurate are set out as a general outline only for guidance and do not constitute any part of an offer or contract. Intending purchasers should not rely on them as statements of representation of fact, but must satisfy themselves by inspection or otherwise as to their accuracy. No person in this firm's employment has the authority to make or give any representation or warranty in respect of the property.