



2 Clive Green, Monkmoor, Shrewsbury SY2 5QL

4 bedroom terraced house—£260,000 Freehold

2 Clive Green, Monkmoor, Shrewsbury SY2 5QL

Coopergreenpooks.co.uk

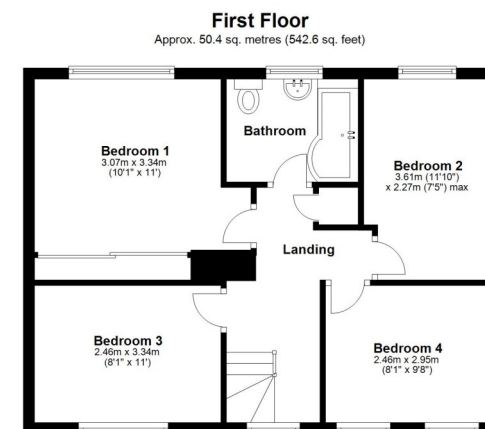
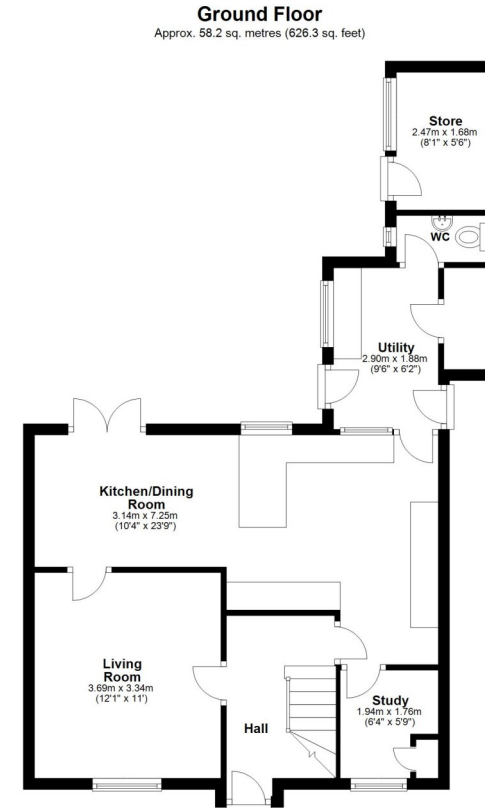
£260,000 Freehold—4 bedroom terraced house

sales@cgpooks.co.uk

Quietly situated within a popular residential area with a lovely outlook over the green, this substantial terraced house offers very practical and versatile accommodation, having been recently re-decorated and re-carpeted throughout, while benefitting from a fantastic private garden and driveway providing plenty of parking.

KEY FEATURES

- Good sized entrance hall with a turning staircase to a light and spacious landing
- Impressive open plan kitchen/dining room, complete with a range of well-fitted units and breakfast bar, as well as glazed doors onto the rear
- Separate utility with access to a useful store, cloakroom and the garden
- There is also an additional versatile room on the ground floor, previously used as a study
- On the first floor are four generous bedrooms, with the master having built in wardrobes, and a family bathroom with shower
- uPVC double glazed windows and gas fired central heating via a modern combi boiler
- Large private rear garden, laid to lawn with paved sun terrace, brick-built store, timber sheds and gated access to side
- Driveway to front providing parking for at least three cars
- A very quiet and convenient location in a popular area of the town, within walking distance of a wide range of amenities, primary and secondary schools, and less than two miles from the town centre
- The property has been recently re-decorated and re-carpeted throughout and is sold with no upward chain



Total area: approx. 108.6 sq. metres (1169.0 sq. feet)











2 Clive Green, Monkmoor, Shrewsbury SY2 5QL

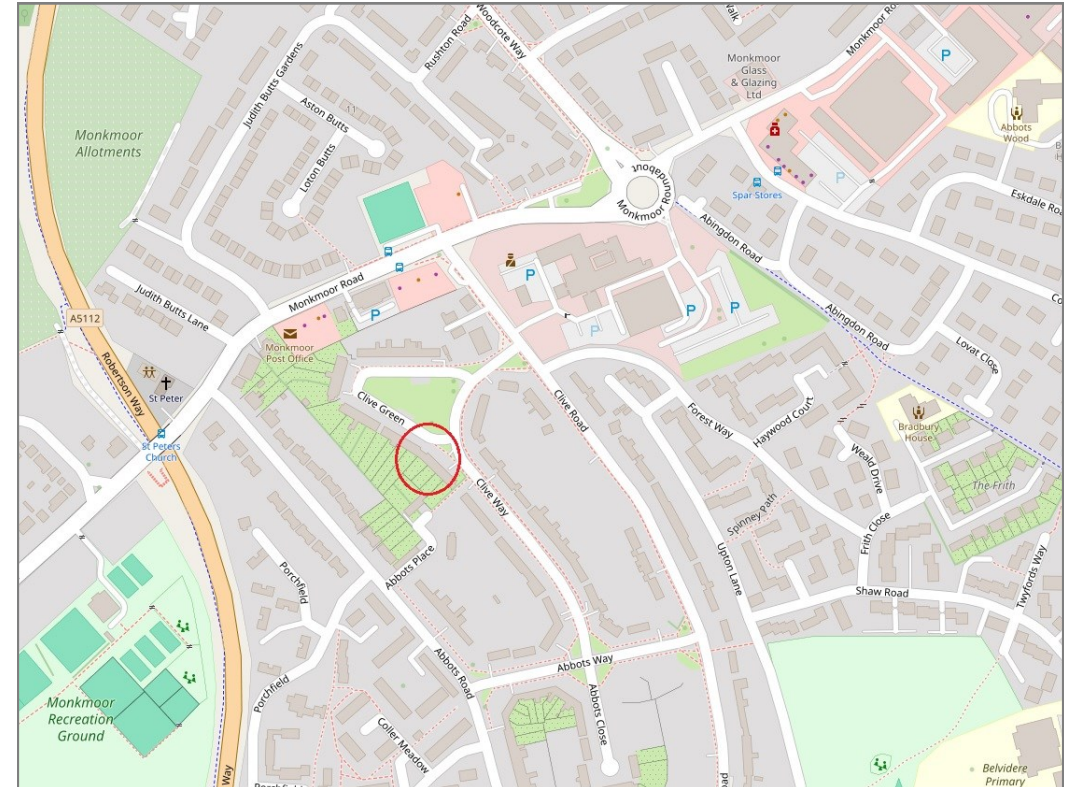
£260,000 Freehold—4 bedroom terraced house

sales@cgpooks.co.uk

rightmove

onTheMarket.com

RICS
Regulated by RICS



BOUNDARIES NOT CONFIRMED

Tenure	Freehold
Local Authority	Shropshire Council
Council Tax	Band B
EPC Band	TBC
Services	All mains services are connected

Expert mortgage advice available

3 Barker St, Shrewsbury SY1 1QF

Cooper Green Pooks
01743 276666



Your home may be repossessed if you do not keep up repayments on your mortgage.

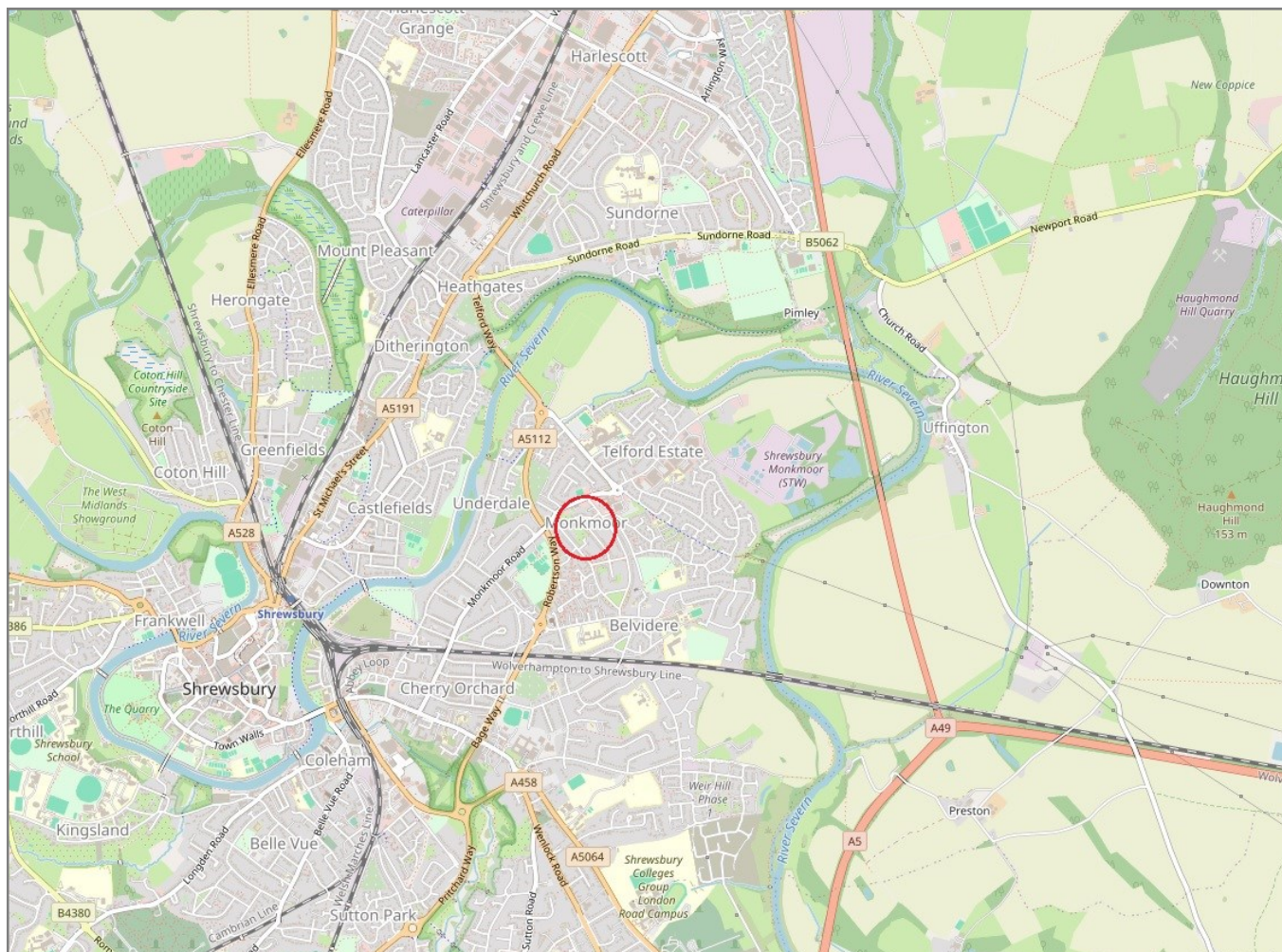
There may be a fee for mortgage advice. The actual amount you pay will depend upon your circumstances. The fee is up to 1% but a typical fee is 0.3% of the amount borrowed.

2 Clive Green, Monkmoor, Shrewsbury SY2 5QL

Coopergreenpooks.co.uk

£260,000 Freehold—4 bedroom terraced house

sales@cgpooks.co.uk



IMPORTANT NOTICE: Cooper Green Pooks for themselves and for the lessors or vendors of this property whose agents they are give notice that: 1 No appliances, services or service installations have been tested and no warranty as to suitability or serviceability is implied. Any prospective purchaser or lessee is advised to obtain verification from their surveyor or solicitor. 2. The particulars are set out as a general outline only for the guidance of the intended purchasers or lessees and do not constitute, nor constitute part of, an offer or contract. 3. All descriptions, reference to condition and necessary permissions for use and occupation and other details are given in good faith and are believed to be correct but any intending purchasers or lessees should not rely on them as statements or representation of fact but satisfy themselves by inspection or otherwise as to the correctness of each of them. 4. No person in the employment of Cooper Green Pooks has any authority to make or give any representation or warranty whatsoever in relation to this property. 5. All rentals and prices are quoted exclusive of Stamp Duty, legal and surveyors fees and any other associated purchasers or lessees costs. 6. Floor plans are indicative only and should not be relied on. 7. The plan showing the boundary of the property is indicative only and has not been checked against the legal title so should not be relied on. 8. All dimensions, floor areas and site areas are only approximate and should not be relied on. Dimensions are generally maximum room dimension.