



10, Tilbrook Drive, Severn Meadows, Shrewsbury, SY1 2TR
£900 Per Month



10, Tilbrook Drive, Severn Meadows, Shrewsbury, SY1 2TR

£900 Per Month

VIRTUAL TOUR AVAILABLE: Attractive fully modernised two double bedroom semi-detached bungalow in a quiet residential area. Includes driveway parking.

Available: Immediately

Description

Comprising: Entrance hall, master bedroom, further double bedroom, modern shower room, good sized living room, new kitchen including oven & electric hob, dining area, conservatory. Front and rear gardens. Driveway parking for two cars. Double glazing, gas central heating. EPC D



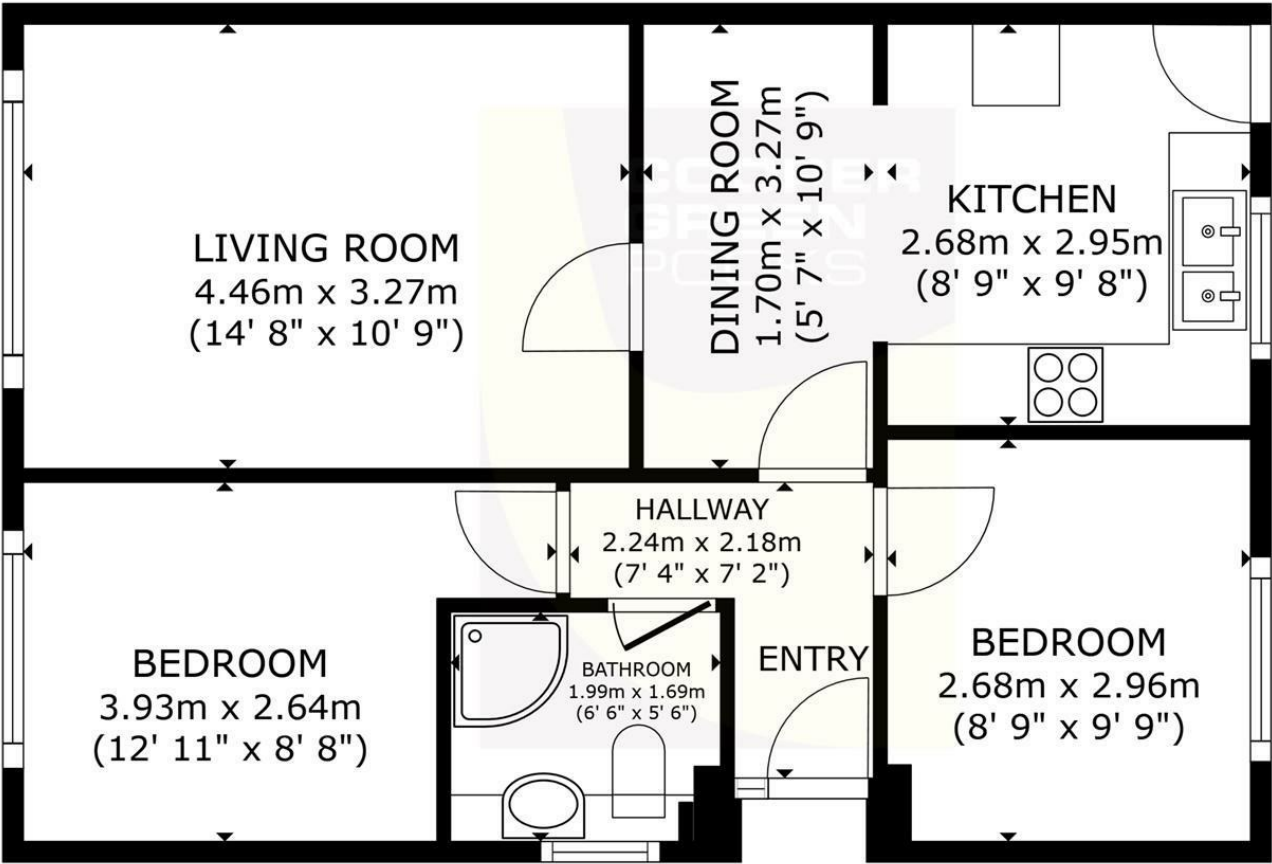
Unfurnished

Council Tax Band: B

Available: 27th May 2025

EPC: D

Floor Plans



FLOOR PLAN

GROSS INTERNAL AREA
FLOOR PLAN 53.8 m² (579 sq.ft.)
TOTAL : 53.8 m² (579 sq.ft.)
SIZES AND DIMENSIONS ARE APPROXIMATE, ACTUAL MAY VARY.

These particulars, whilst believed to be accurate are set out as a general outline only for guidance and do not constitute any part of an offer or contract. Intending purchasers should not rely on them as statements of representation of fact, but must satisfy themselves by inspection or otherwise as to their accuracy. No person in this firms employment has the authority to make or give any representation or warranty in respect of the property.