



120 The Old Meadow, Abbey Foregate, Shrewsbury SY2 6GA

2 bedroom second floor apartment—£199,950 Leasehold

120 The Old Meadow, Abbey Foregate, Shrewsbury SY2 6GA

Coopergreenpooks.co.uk

£199,950 Leasehold—2 bedroom second floor apartment

sales@cgpooks.co.uk

Occupying a lovely, elevated position within a secure gated development, this thoughtfully designed second floor apartment offers well-proportioned and practical accommodation, benefitting from a lovely outlook and private parking. The property is located just a short walk from the town centre, as well as having beautifully landscaped communal gardens and fantastic riverside walks.

KEY FEATURES

- Neatly presented communal entrance
- Private inner hallway with useful storage
- Impressive open plan living/kitchen/dining room with three windows to front allowing plenty of natural light
- Fitted kitchen, complete with integrated appliances
- Master bedroom with built in wardrobes and en-suite shower room
- A further double bedroom, also having built in wardrobes, and a separate family bathroom
- Double glazed windows and gas fired central heating
- Private allocated parking, conveniently located to the rear of the building
- Landscaped communal gardens with direct access to riverside walks for residents to enjoy

Cooper Green Pooks

3 Barker Street

Shrewsbury

SY1 1QF

www.cgpooks.co.uk

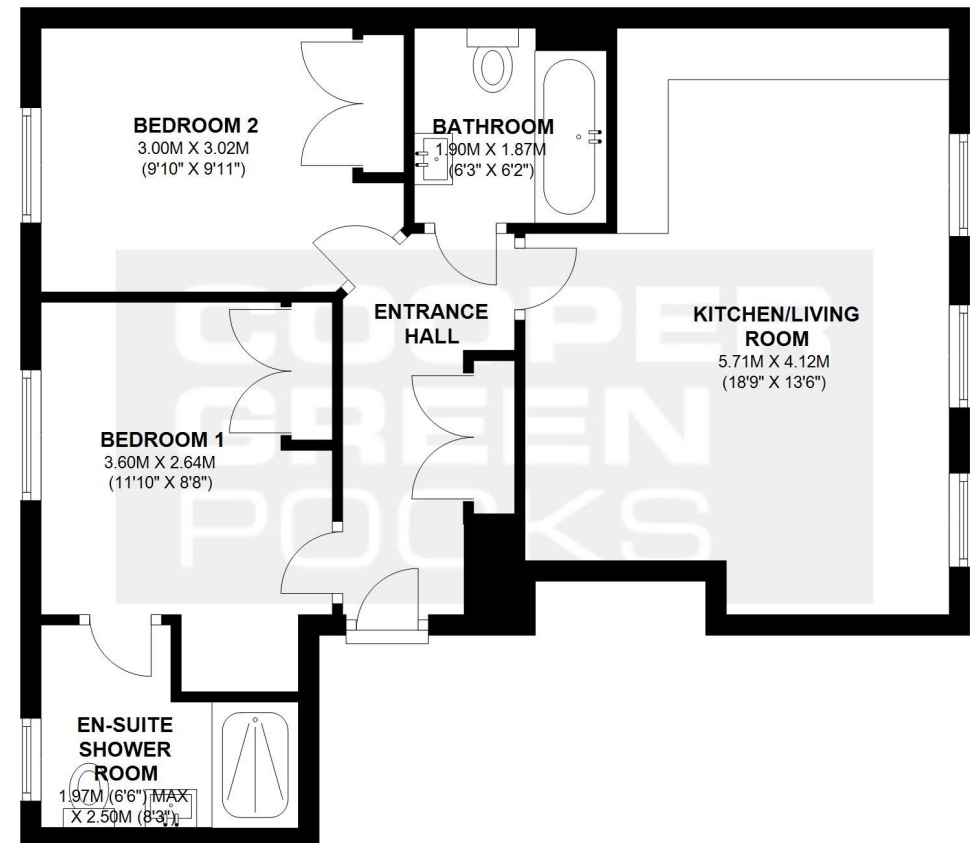
sales@cgpooks.co.uk

01743 276666



SECOND FLOOR

APPROX. 54.5 SQ. METRES (586.3 SQ. FEET)



TOTAL AREA: APPROX. 54.5 SQ. METRES (586.3 SQ. FEET)

We accept no responsibility for any mistake or inaccuracy contained within the floorplan. The floorplan is provided as a guide only and should be taken as an illustration only. The measurements, contents and positioning are approximations only and provided as a guidance tool and not an exact replication of the property.

Plan produced using PlanUp.







120 The Old Meadow, Abbey Foregate, Shrewsbury SY2 6GA

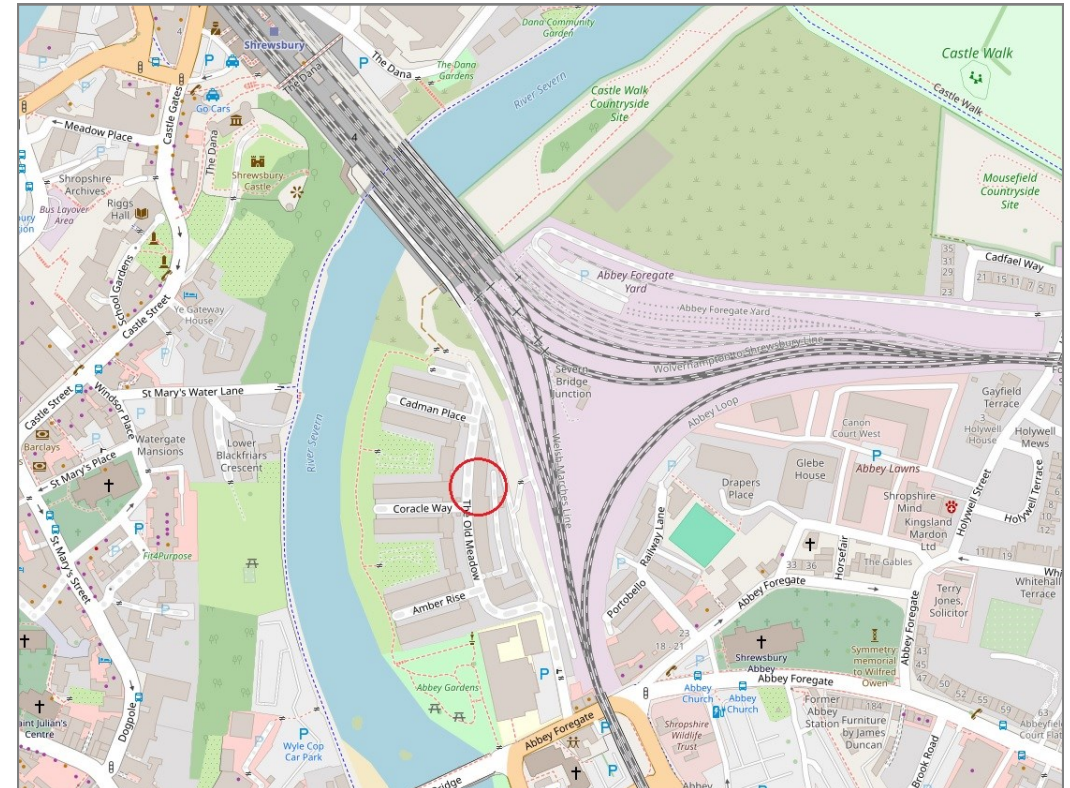
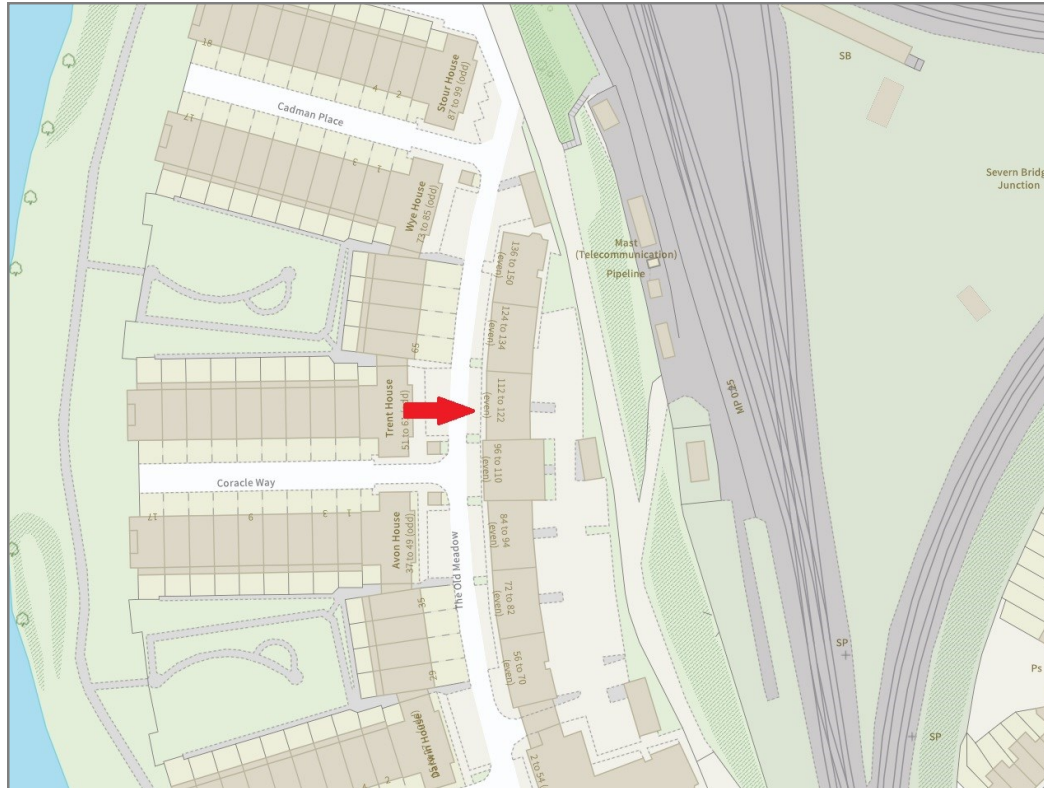
£199,950 Leasehold—2 bedroom second floor apartment

sales@cgpooks.co.uk

rightmove

onTheMarket.com

RICS
Regulated by RICS



BOUNDARIES NOT CONFIRMED

Tenure	Leasehold
Lease Length	199 years from 2015
Service Charge	£1700 PA
Ground Rent	£300 PA

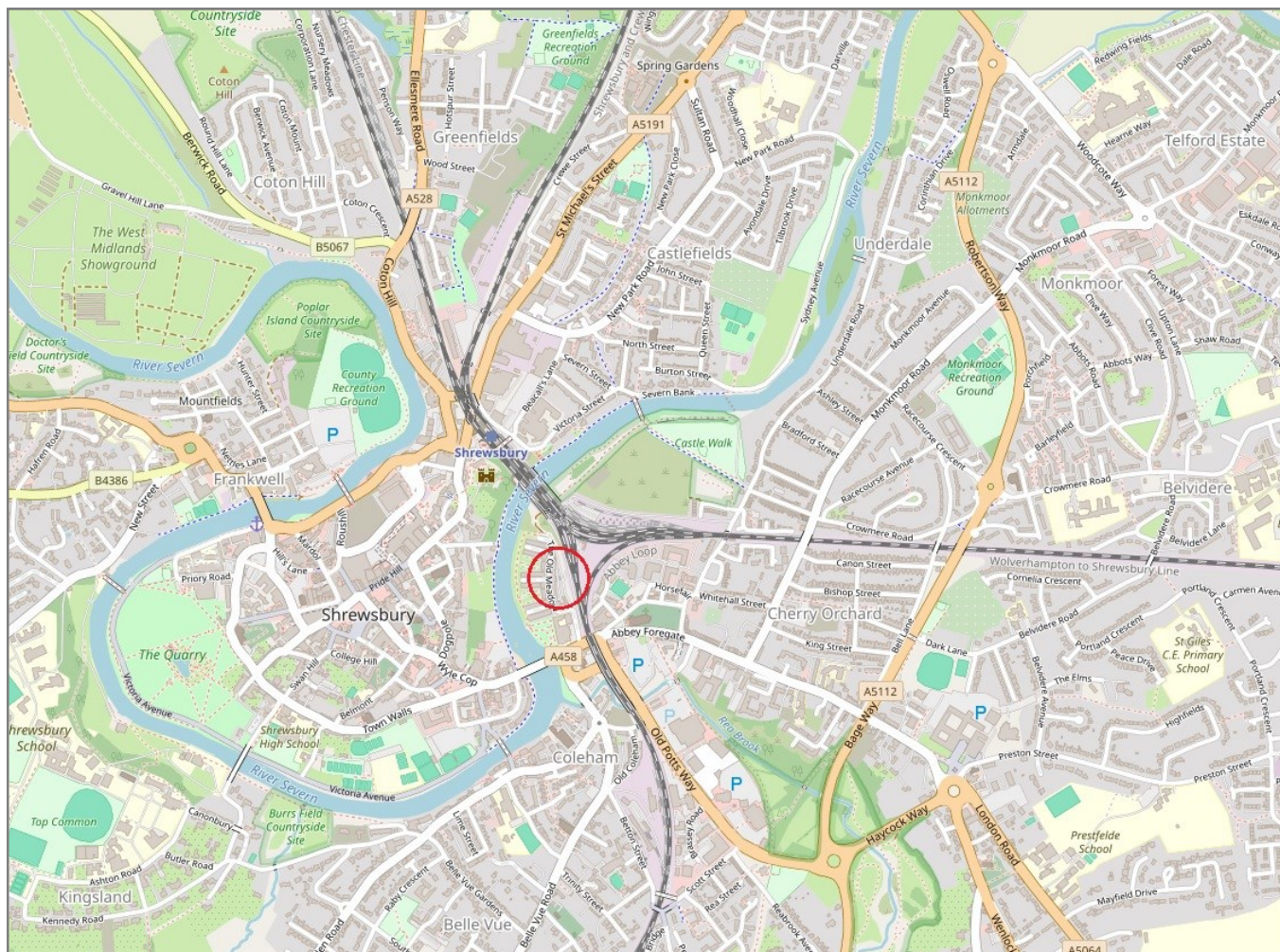
Local Authority	Shropshire Council
Council Tax	Band B
EPC Band	Band B
Services	All mains services are connected

120 The Old Meadow, Abbey Foregate, Shrewsbury SY2 6GA

Coopergreenpooks.co.uk

£199,950 Leasehold—2 bedroom second floor apartment

sales@cgpooks.co.uk



IMPORTANT NOTICE: Cooper Green Pooks for themselves and for the lessors or vendors of this property whose agents they are give notice that: 1 No appliances, services or service installations have been tested and no warranty as to suitability or serviceability is implied. Any prospective purchaser or lessee is advised to obtain verification from their surveyor or solicitor. 2. The particulars are set out as a general outline only for the guidance of the intended purchasers or lessees and do not constitute, nor constitute part of, an offer or contract. 3. All descriptions, reference to condition and necessary permissions for use and occupation and other details are given in good faith and are believed to be correct but any intending purchasers or lessees should not rely on them as statements or representation of fact but satisfy themselves by inspection or otherwise as to the correctness of each of them. 4. No person in the employment of Cooper Green Pooks has any authority to make or give any representation or warranty whatsoever in relation to this property. 5. All rentals and prices are quoted exclusive of Stamp Duty, legal and surveyors fees and any other associated purchasers or lessees costs. 6. Floor plans are indicative only and should not be relied on. 7. The plan showing the boundary of the property is indicative only and has not been checked against the legal title so should not be relied on. 8. All dimensions, floor areas and site areas are only approximate and should not be relied on. Dimensions are generally maximum room dimension.