



3, King Edwards Fields, Condover, Shrewsbury, SY5 7EZ
£2,600 Per Month



3, King Edwards Fields, Condover, Shrewsbury, SY5 7EZ

£2,600 Per Month

VIRTUAL TOUR AVAILABLE - Newly built contemporary five bedroom detached house forming part of a new development in the village of Condover, offering spacious open plan living accommodation downstairs and five bedrooms upstairs off a gallery landing. This property comes with driveway parking and a single garage with electric door, views towards the Wrekin, walking distance to local amenities and a short drive to Shrewsbury town centre, the A49, A5 and M54.

Available: 24/06/2025

Description

Comprising: Entrance hall with large storage cupboard, cloakroom with WC, spacious open plan dining area and kitchen with dual aspect windows providing views over the rear garden and towards The Wrekin, American fridge freezer with water dispenser, integrated dishwasher, microwave, wine fridge, double range oven with gas hob, breakfast bar, utility room with washing machine and tumble dryer, ample storage and Belfast sink and door to side of property. Living room with views towards The Wrekin, built in TV unit and floor to ceiling bi-folding doors to rear patio, study/dining room. Stairs to landing with balcony overlooking entrance hall creating an airy and light space, large airing cupboard, master bedroom with large walk in dressing room, Juliette balcony overlooking rear garden, en-suite shower room with walk-in shower and heated towel rail, further double bedroom with en-suite shower room, three further double bedrooms, bathroom with separate shower and bath. Rear Garden with patio and side access to front of property. Driveway parking, single garage with side access, electric up and over door and power. Double glazed windows, gas central heating. EPC B.



Unfurnished

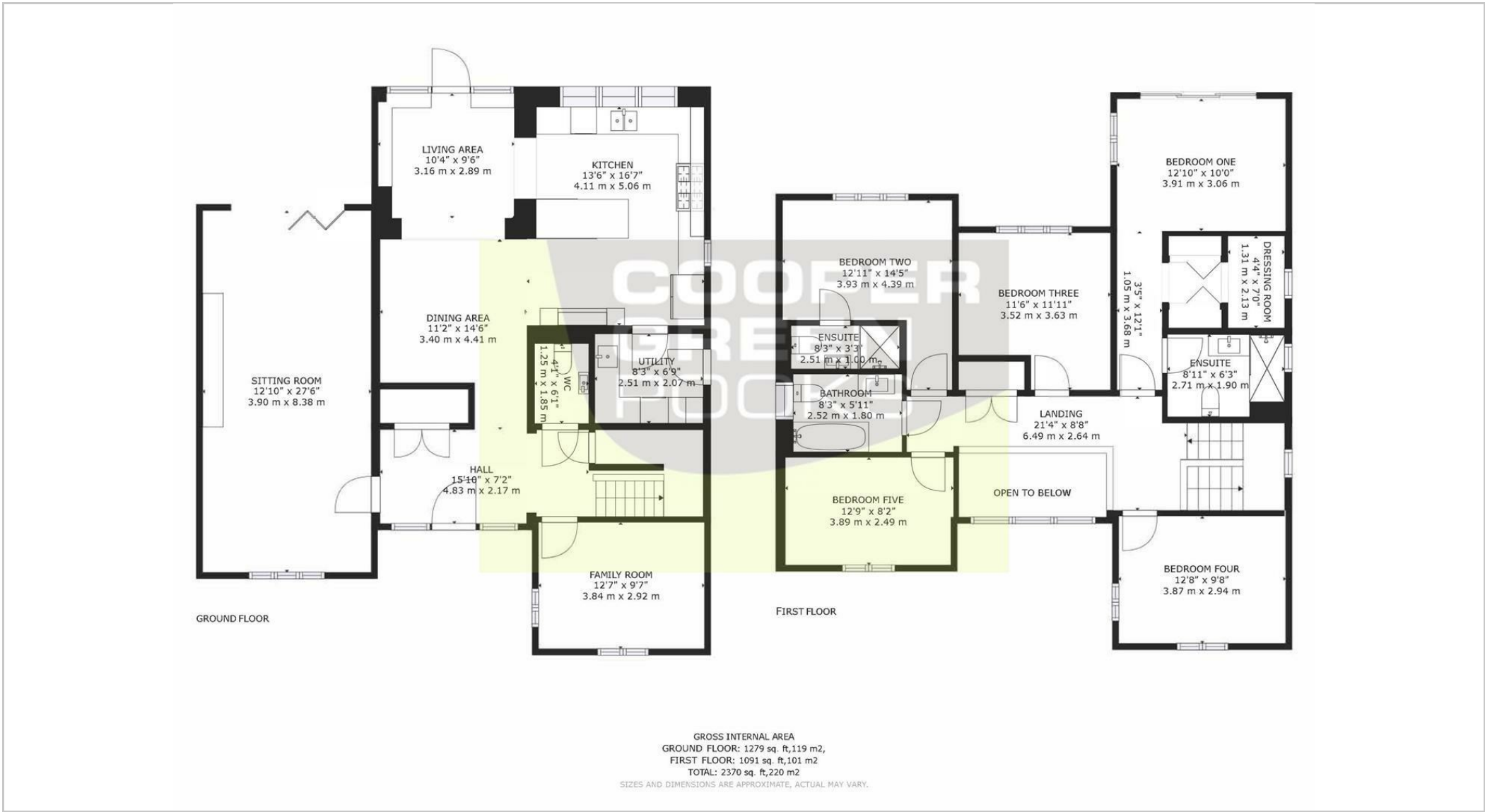
Council Tax Band: G

Available: 24th June 2025

EPC: B



Floor Plans



These particulars, whilst believed to be accurate are set out as a general outline only for guidance and do not constitute any part of an offer or contract. Intending purchasers should not rely on them as statements of representation of fact, but must satisfy themselves by inspection or otherwise as to their accuracy. No person in this firms employment has the authority to make or give any representation or warranty in respect of the property.