



29, Bromley Road, Bicton Heath, Shrewsbury, SY3 5AZ
£950 Per Month



29, Bromley Road, Bicton Heath, Shrewsbury, SY3 5AZ

£950 Per Month

VIRTUAL TOUR AVAILABLE: Quietly positioned and recently renovated two bedroom semi-detached bungalow in this popular residential area with excellent road links and easy access to a host of local amenities. Driveway parking and a garage.

Available from: 21/05/25

Description

Comprising: Entrance hall, kitchen with freestanding double oven and electric hob, under counter space for washing machine and fridge, living dining room, study/spare bedroom with built in cupboard, conservatory, bedroom with built in wardrobes, shower room. Double Glazing. Gas Central Heating. Garage with side access to garden. Tandem parking. EPC C.



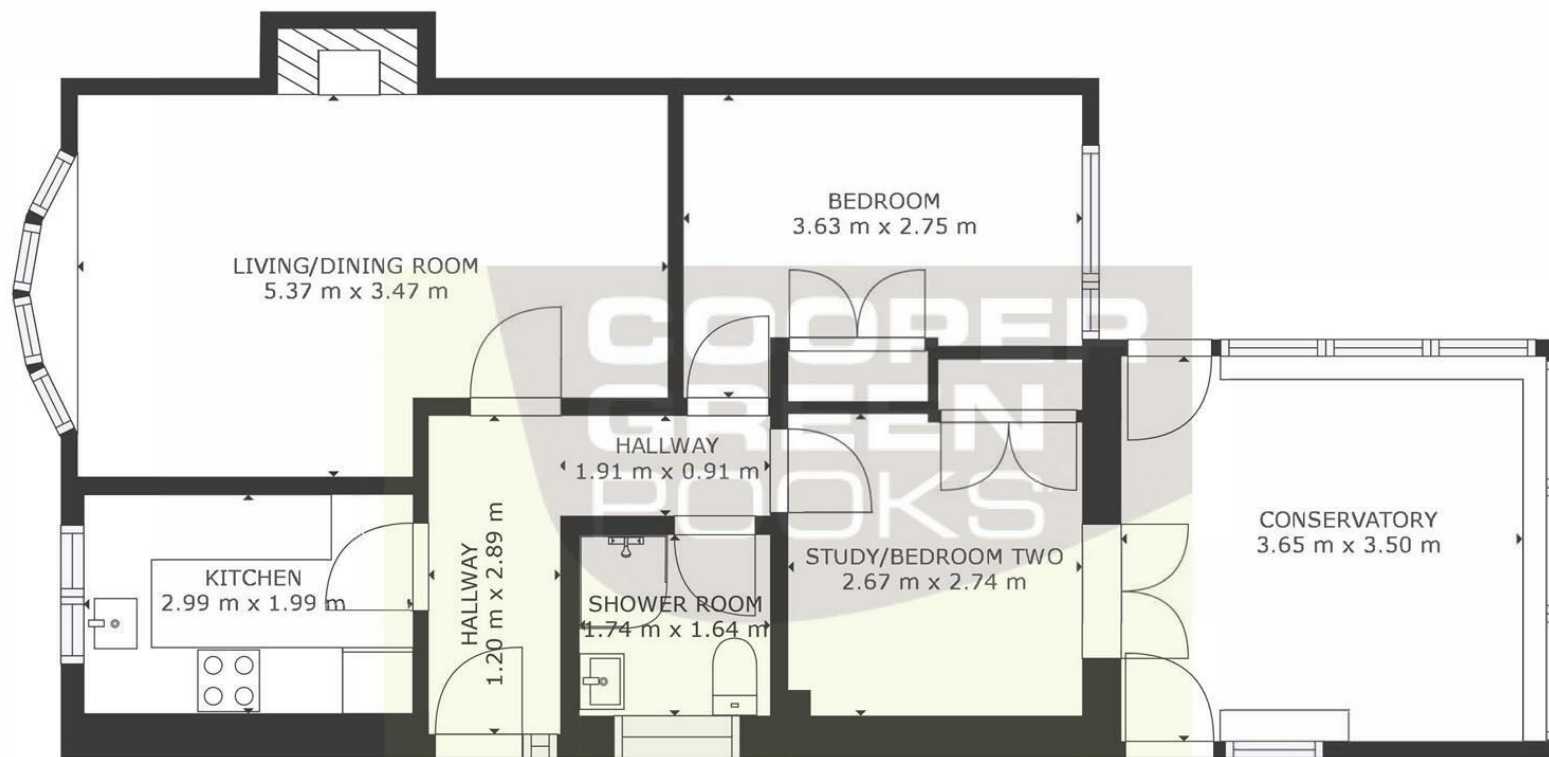
Unfurnished

Council Tax Band: B

Available: 21st May 2025

EPC: C

Floor Plans



GROUND FLOOR

TOTAL: 66 m²
GROUND FLOOR: 66 m²
EXCLUDED AREAS: FIREPLACE: 1 m²
SIZES AND DIMENSIONS ARE APPROXIMATE, ACTUAL MAY VARY.

These particulars, whilst believed to be accurate are set out as a general outline only for guidance and do not constitute any part of an offer or contract. Intending purchasers should not rely on them as statements of representation of fact, but must satisfy themselves by inspection or otherwise as to their accuracy. No person in this firm's employment has the authority to make or give any representation or warranty in respect of the property.