

**Apartment 1, 14/15, High Street, Shrewsbury, SY1 1SP**  
£850 Per Month



Apartment 1, 14/15, High Street, Shrewsbury, SY1 1SP

**£850 Per Month**

VIRTUAL TOUR AVAILABLE: An individually designed ground floor apartment of character occupying a fantastic courtyard position within the town centre, just off Shrewsbury High Street. The property is part of a recently converted small development finished to a high standard while retaining many original features.

Available: 27/06/25



## Description

Comprising: Secure access to communal courtyard, private entrance, spacious living room, double bedroom, fitted kitchen including oven, hob, washing machine and fridge/freezer, contemporary shower room, modern central heating system. Bike store. EPC E



Unfurnished

Council Tax Band: A

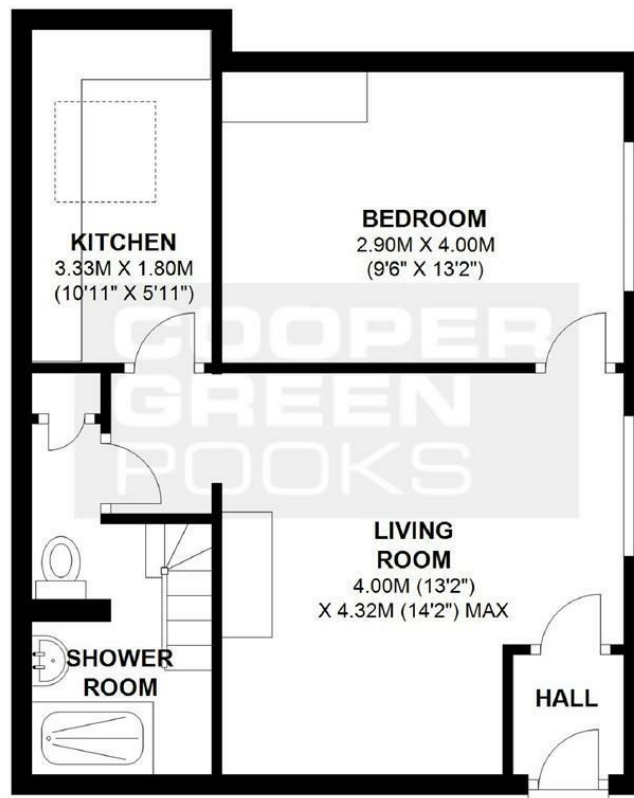
Available: 27th June 2025

EPC: E



## Floor Plans

### GROUND FLOOR APPROX. 41.9 SQ. METRES (450.6 SQ. FEET)



**TOTAL AREA: APPROX. 41.9 SQ. METRES (450.6 SQ. FEET)**

We accept no responsibility for any mistake or inaccuracy contained within the floorplan. The floorplan is provided as a guide only and should be taken as an illustration only. The measurements, contents and positioning are approximations only and provided as a guidance tool and not an exact replication of the property.

Plan produced using PlanUp.

These particulars, whilst believed to be accurate are set out as a general outline only for guidance and do not constitute any part of an offer or contract. Intending purchasers should not rely on them as statements of representation of fact, but must satisfy themselves by inspection or otherwise as to their accuracy. No person in this firm's employment has the authority to make or give any representation or warranty in respect of the property.