



14 Drawwell Street, Belle Vue, Shrewsbury SY3 7RF

3 bedroom terraced house—£350,000 Freehold

14 Drawwell Street, Belle Vue, Shrewsbury SY3 7RF

£350,000 Freehold—3 bedroom terraced house

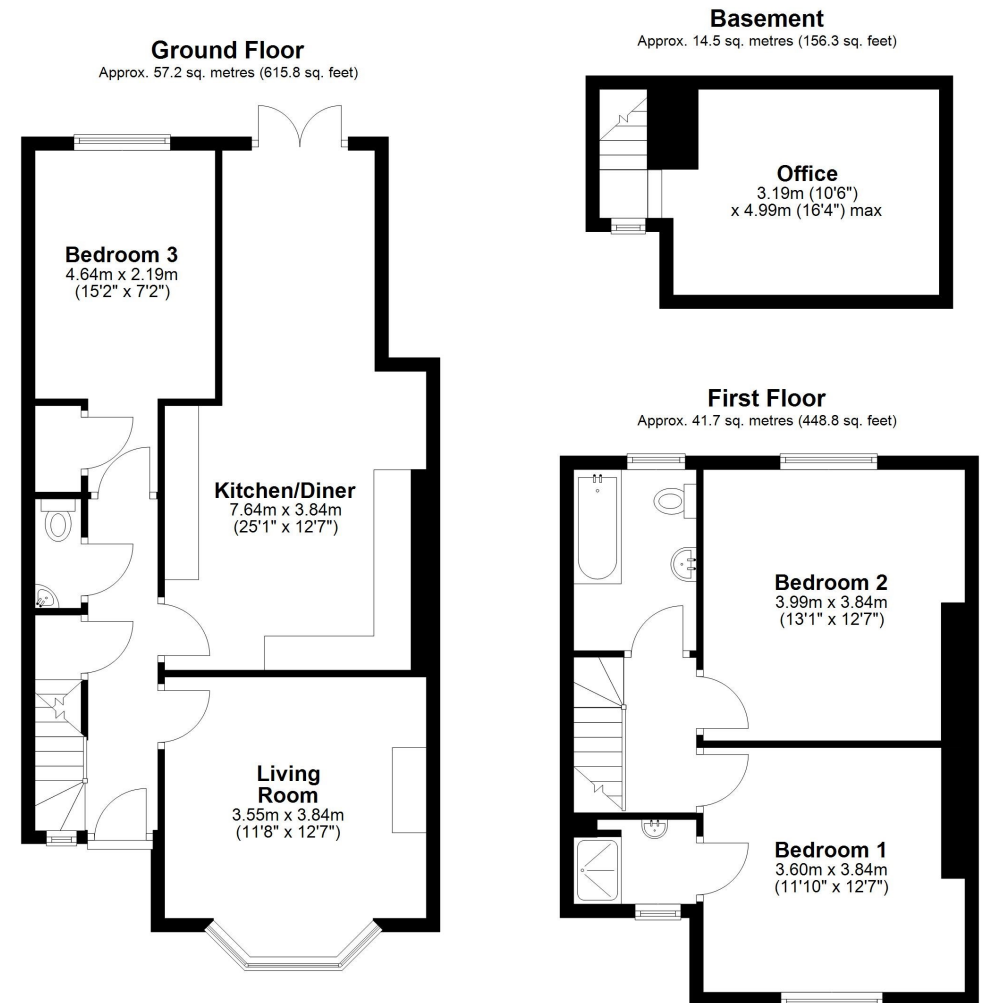
sales@cgpooks.co.uk

A very attractive and extensively improved Victorian house, offering spacious and versatile accommodation with a large rear garden, in the popular Belle Vue area of town.

KEY FEATURES

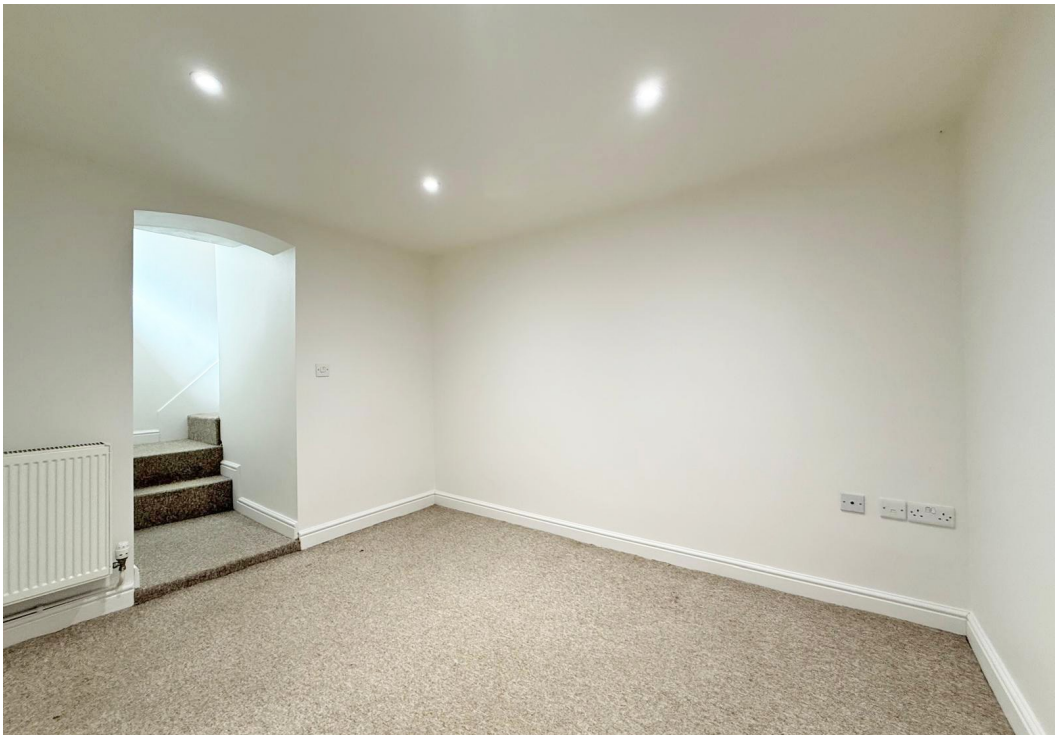
- Covered entrance area to hall with cloakroom.
- Good size living room with bay window to front.
- Large open plan kitchen/dining room with wood effect flooring and glazed double doors to rear garden.
- The kitchen has been newly fitted to a high standard, comprising a stylish range of units with integrated appliances.
- There is a ground floor 3rd double bedroom and an enclosed staircase to a useful lower ground floor converted cellar, which has natural light and provides an excellent space for a home office or playroom.
- From the hall there is a staircase to the first-floor landing, where there are 2 further double bedrooms and a family bathroom. In addition to which the main bedroom also has an en suite shower room.
- Double glazed windows and gas fired central heating.
- Large private lawned rear garden with a paved sun terrace.
- Well situate don a quiet and pretty street, in the sough after Belle Vue area of town, just a short walk from Coleham with its fantastic amenities and outstanding primary school.
- No onward chain.

Coopergreenpooks.co.uk



Total area: approx. 113.4 sq. metres (1220.8 sq. feet)







14 Drawwell Street, Belle Vue, Shrewsbury SY3 7RF

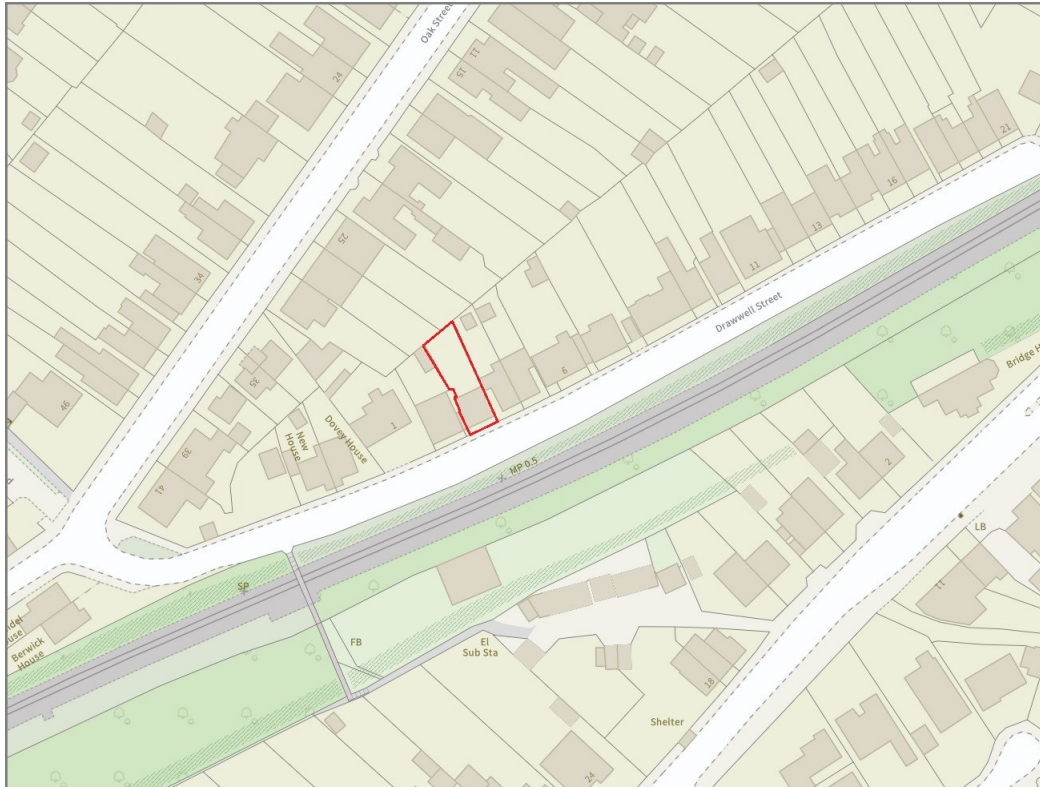
£350,000 Freehold—3 bedroom terraced house

sales@cgpooks.co.uk

rightmove

onTheMarket.com

RICS
Regulated by RICS



BOUNDARIES NOT CONFIRMED

Tenure	Freehold
Local Authority	Shropshire Council
Council Tax	Band C
EPC Band	Band C
Services	All mains services are connected

Expert mortgage advice available

3 Barker St, Shrewsbury SY1 1QF

Cooper Green Pooks
01743 276666



Your home may be repossessed if you do not keep up repayments on your mortgage.

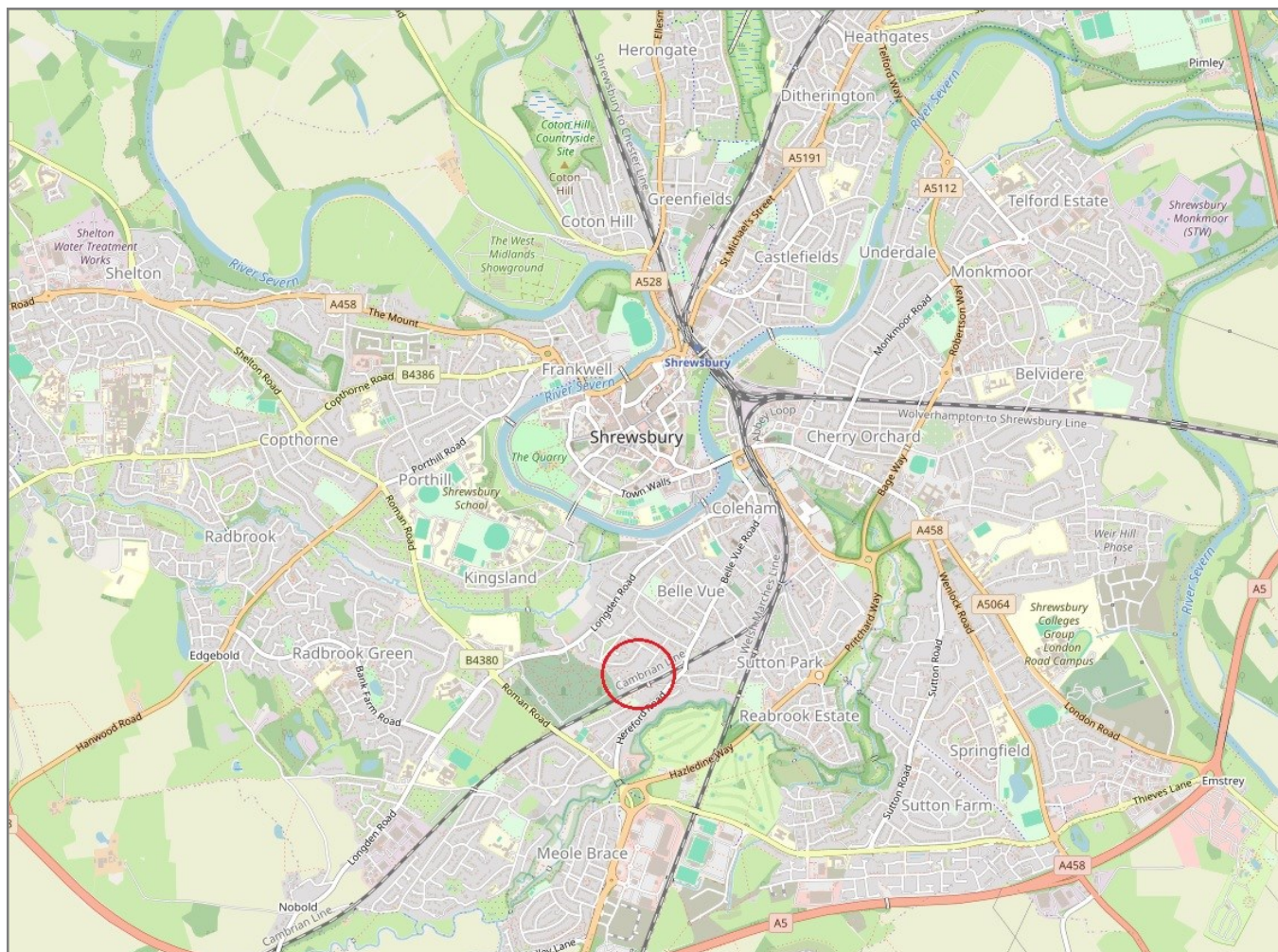
There may be a fee for mortgage advice. The actual amount you pay will depend upon your circumstances. The fee is up to 1% but a typical fee is 0.3% of the amount borrowed.

14 Drawwell Street, Belle Vue, Shrewsbury SY3 7RF

Coopergreenpooks.co.uk

£350,000 Freehold—3 bedroom terraced house

sales@cgpooks.co.uk



IMPORTANT NOTICE: Cooper Green Pooks for themselves and for the lessors or vendors of this property whose agents they are give notice that: 1 No appliances, services or service installations have been tested and no warranty as to suitability or serviceability is implied. Any prospective purchaser or lessee is advised to obtain verification from their surveyor or solicitor. 2. The particulars are set out as a general outline only for the guidance of the intended purchasers or lessees and do not constitute, nor constitute part of, an offer or contract. 3. All descriptions, reference to condition and necessary permissions for use and occupation and other details are given in good faith and are believed to be correct but any intending purchasers or lessees should not rely on them as statements or representation of fact but satisfy themselves by inspection or otherwise as to the correctness of each of them. 4. No person in the employment of Cooper Green Pooks has any authority to make or give any representation or warranty whatsoever in relation to this property. 5. All rentals and prices are quoted exclusive of Stamp Duty, legal and surveyors fees and any other associated purchasers or lessees costs. 6. Floor plans are indicative only and should not be relied on. 7. The plan showing the boundary of the property is indicative only and has not been checked against the legal title so should not be relied on. 8. All dimensions, floor areas and site areas are only approximate and should not be relied on. Dimensions are generally maximum room dimension.