



22 Greenfields Gardens, Ellesmere Grange, Greenfields, Shrewsbury, SY1 2RN
£900 Per Month



22 Greenfields Gardens, Ellesmere Grange, Greenfields, Shrewsbury, SY1 2RN

£900 Per Month

VIRTUAL TOUR AVAILABLE: Well maintained third floor FURNISHED two bedroom apartment in a modern development a short from Shrewsbury town centre and railway station. Includes allocated parking.

Available: 04/06/25

Description

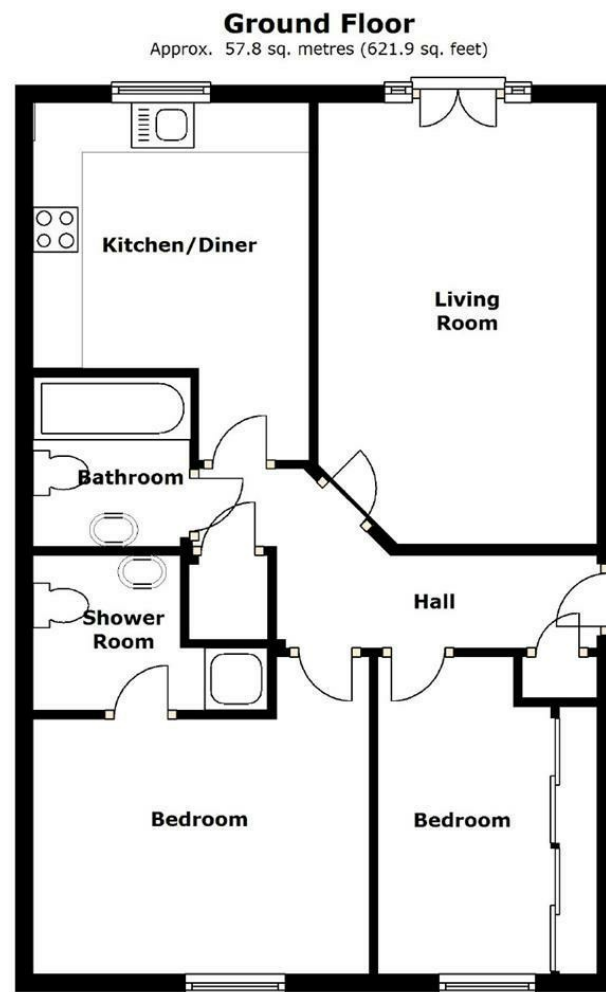
Comprising: Communal entrance hall, stairs to third floor, private entrance hall, living room including Juliet Balcony, kitchen including white goods, master bedroom including en-suite shower room, further double bedroom, bathroom including shower, storage cupboard. Electric heating, double glazing. Allocated parking space. EPC D



Furnished
Council Tax Band: B
Available: 4th June 2025
EPC: D



Floor Plans



These particulars, whilst believed to be accurate are set out as a general outline only for guidance and do not constitute any part of an offer or contract. Intending purchasers should not rely on them as statements of representation of fact, but must satisfy themselves by inspection or otherwise as to their accuracy. No person in this firm's employment has the authority to make or give any representation or warranty in respect of the property.