

28, St Julians Mews, Williams Way, Shrewsbury, SY1 1AD
£800 Per Month



28, St Julians Mews, Williams Way, Shrewsbury, SY1 1AD

£800 Per Month

Modern one bedroom first floor apartment in a select, gated development at the foot of Shrewsbury's historic Wyle Cop and on the edge of the beautiful Quarry Park. Includes allocated gated parking for one car.

Description

Comprising: Communal Entrance Hall, Stairs to Apartment, Hall with Two Storage Cupboards, Living Room with Contemporary Kitchen including oven, gas hob and fridge/freezer, Double Bedroom, Bathroom with Shower, Gas Central Heating, Gated Parking. EPC C

Unfurnished

Council Tax Band: A

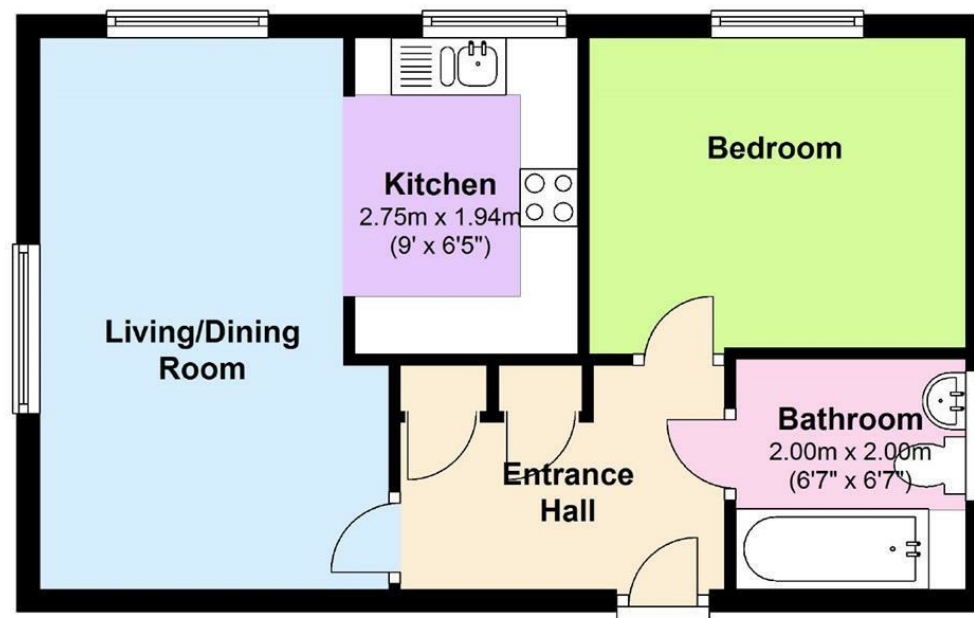
Available: 28th April 2025

EPC: C

Floor Plans

First Floor

Approx. 38.7 sq. metres (416.4 sq. feet)



Total area: approx. 38.7 sq. metres (416.4 sq. feet)

We accept no responsibility for any mistake or inaccuracy contained within the floorplan. The floorplan is provided as a guide only and should be taken as an illustration only. The measurements, contents and positioning are approximations only and provided as a guidance tool and not an exact replication of the property.

Plan produced using PlanUp.

These particulars, whilst believed to be accurate are set out as a general outline only for guidance and do not constitute any part of an offer or contract. Intending purchasers should not rely on them as statements of representation of fact, but must satisfy themselves by inspection or otherwise as to their accuracy. No person in this firm's employment has the authority to make or give any representation or warranty in respect of the property.