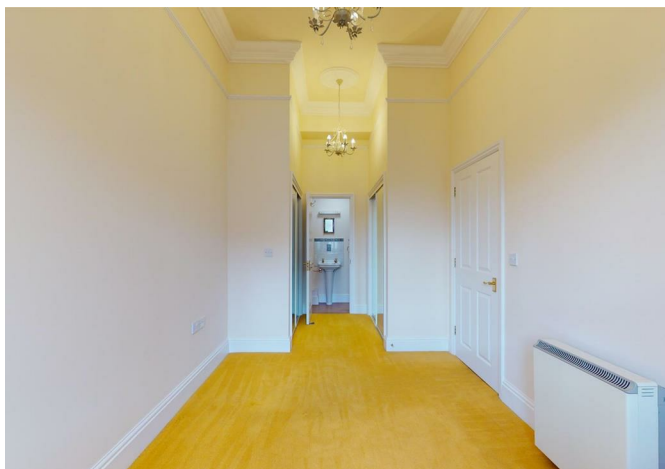


**8, Kingsland Bridge Mansions, Murivance, Shrewsbury, SY1 1JF**  
£1,050 Per Month





8, Kingsland Bridge Mansions, Murivance, Shrewsbury, SY1 1JF

**£1,050 Per Month**

VIRTUAL TOUR AVAILABLE: Conveniently located two double bedroom apartment in a sought after residential development on the edge of Quarry Park, a very short distance from Shrewsbury town centre. The apartment benefits from allocated parking.

Available: 03/06/25

## Description

Comprising: Entrance hall, kitchen with dishwasher, fridge/freezer, washing machine, double oven and hob, two double bedrooms, main shower room, en-suite shower room. Electric heating. Secondary Glazing. Allocated parking. EPC B.



Unfurnished

Council Tax Band: D

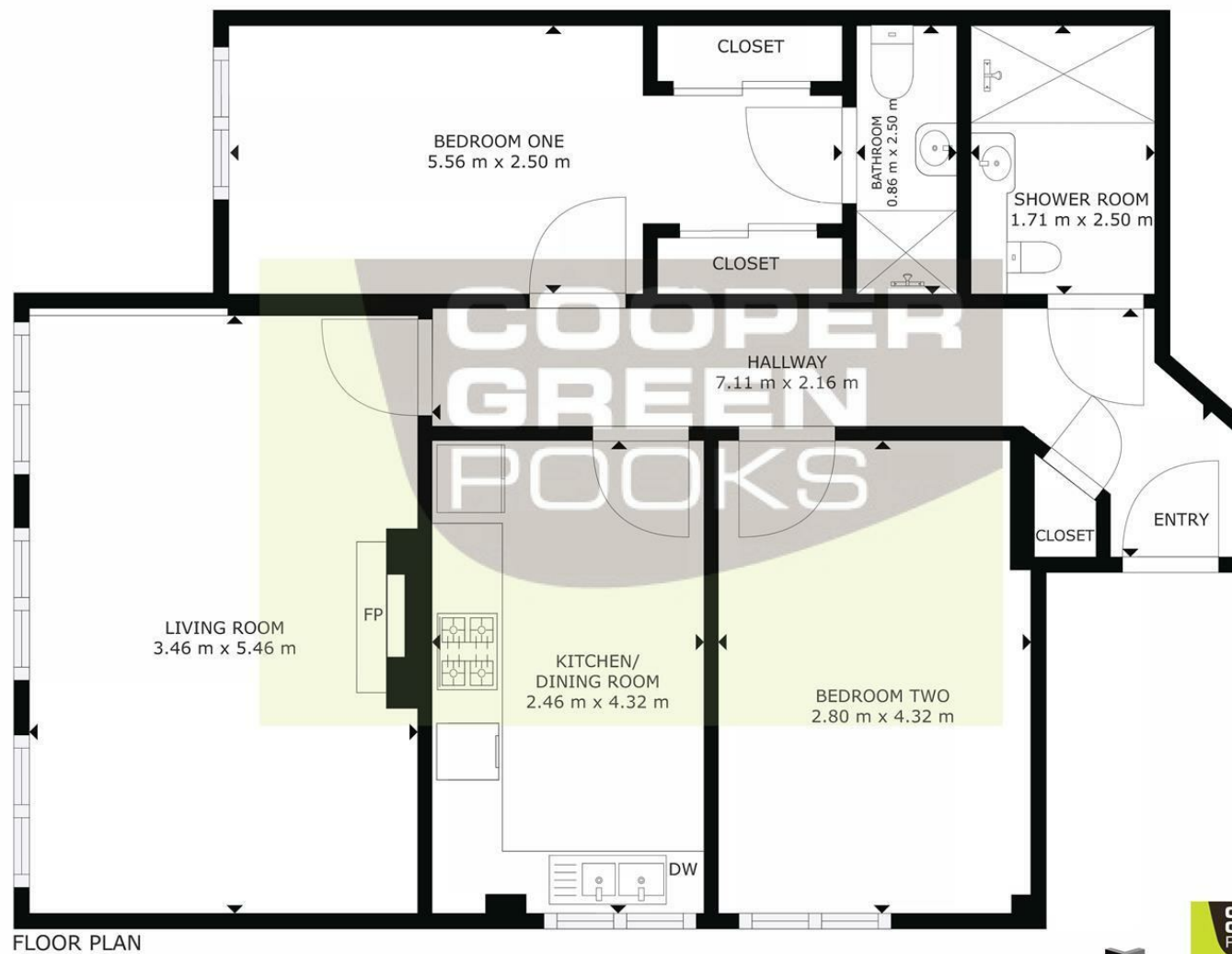
Available: 3rd June 2025

EPC: B





## Floor Plans



FLOOR PLAN

GROSS INTERNAL AREA  
FLOOR PLAN: 74 m<sup>2</sup>  
SIZES AND DIMENSIONS ARE APPROXIMATE, ACTUAL MAY VARY.



These particulars, whilst believed to be accurate are set out as a general outline only for guidance and do not constitute any part of an offer or contract. Intending purchasers should not rely on them as statements of representation of fact, but must satisfy themselves by inspection or otherwise as to their accuracy. No person in this firm's employment has the authority to make or give any representation or warranty in respect of the property.