



6 St Thomas Close, Hanwood, Shrewsbury, SY5 8JJ

3 bedroom end of terrace house—£285,000 Freehold

6 St Thomas Close, Hanwood, Shrewsbury, SY5 8JJ

£285,000 Freehold—3 bedroom end of terrace house

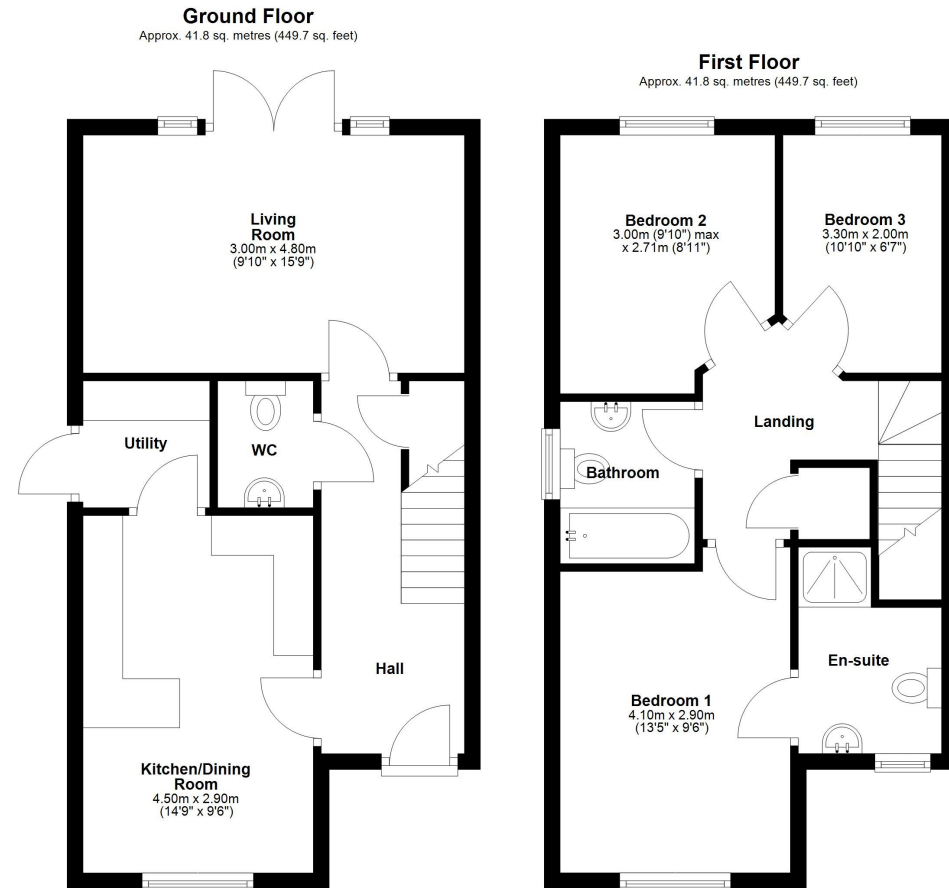
sales@cgpooks.co.uk

This beautifully presented end of terrace house offers thoughtfully designed and well-proportioned accommodation, finished to a high standard throughout, while being situated within a popular modern development on the fringe of the village, and benefitting from a private rear garden, lovely outlook and allocated parking for two cars.

KEY FEATURES

- Good sized entrance hall with cloakroom, useful storage and turning staircase to landing
- Open plan kitchen/dining room, complete with a range of well-fitted units and access to the separate utility
- Living room with glazed double doors opening onto the rear garden
- Master bedroom with views to front and en-suite shower room
- Two further bedrooms and a family bathroom with shower
- uPVC double glazed windows and gas fired central heating
- Landscaped rear garden, laid to lawn with paved terrace, planted borders and access to both the side and rear
- Private allocated parking for two cars
- A great location in a lovely setting, just a short walk from the local primary school, park, village pub and shop, as well as being just a few minutes from the A5 and only ten minutes from the centre of Shrewsbury

Coopergreenpooks.co.uk



Total area: approx. 83.6 sq. metres (899.4 sq. feet)









6 St Thomas Close, Hanwood, Shrewsbury, SY5 8JJ

£285,000 Freehold—3 bedroom end of terrace house

sales@cgpooks.co.uk

Coopergreenpooks.co.uk



Cooper Green Pooks
3 Barker Street
Shrewsbury
SY1 1QF

www.cgpooks.co.uk
sales@cgpooks.co.uk



6 St Thomas Close, Hanwood, Shrewsbury, SY5 8JJ

£285,000 Freehold—3 bedroom end of terrace house

sales@cgpooks.co.uk

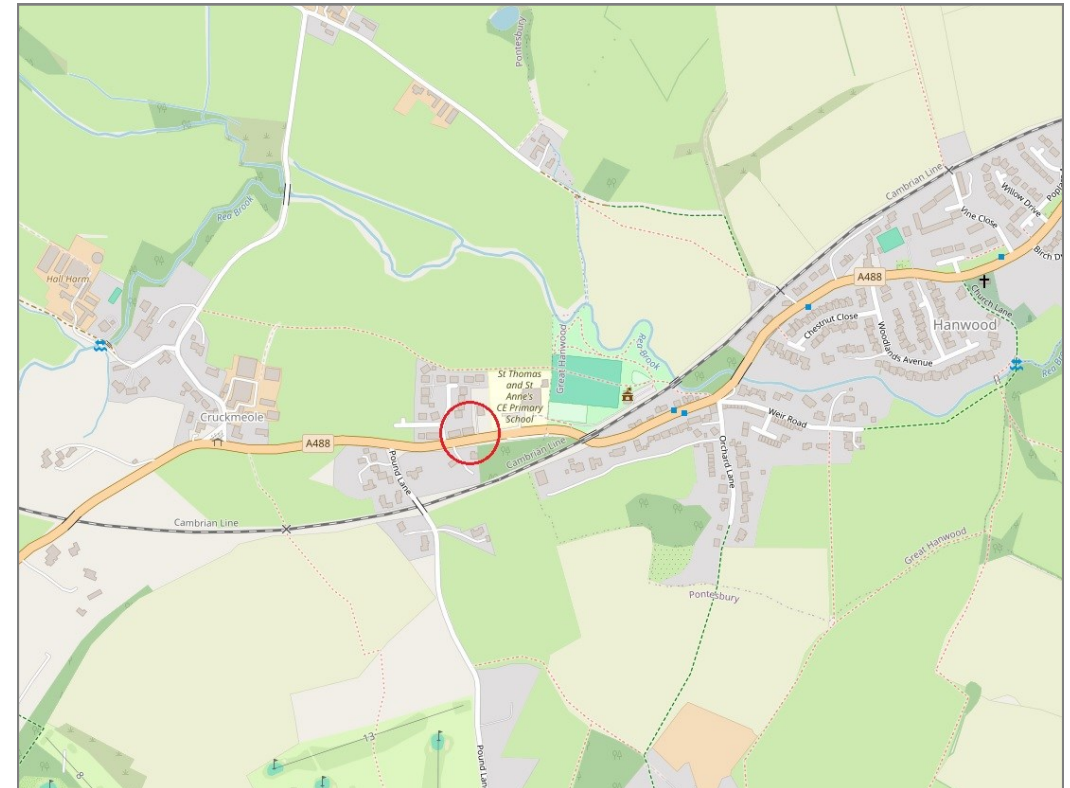
rightmove 

 OnTheMarket.com

 **RICS**
Regulated by RICS



BOUNDARIES NOT CONFIRMED



Tenure	Freehold
Local Authority	Shropshire Council
Council Tax	Band C
EPC Band	Band B
Services	All mains services are connected

 **Expert mortgage advice available**

3 Barker St, Shrewsbury SY1 1QF

Cooper Green Pooks
01743 276666



Your home may be repossessed if you do not keep up repayments on your mortgage.

There may be a fee for mortgage advice. The actual amount you pay will depend upon your circumstances. The fee is up to 1% but a typical fee is 0.3% of the amount borrowed.

6 St Thomas Close, Hanwood, Shrewsbury, SY5 8JJ

Coopergreenpooks.co.uk

£285,000 Freehold—3 bedroom end of terrace house

sales@cgpooks.co.uk



IMPORTANT NOTICE: Cooper Green Pooks for themselves and for the lessors or vendors of this property whose agents they are give notice that: 1 No appliances, services or service installations have been tested and no warranty as to suitability or serviceability is implied. Any prospective purchaser or lessee is advised to obtain verification from their surveyor or solicitor. 2. The particulars are set out as a general outline only for the guidance of the intended purchasers or lessees and do not constitute, nor constitute part of, an offer or contract. 3. All descriptions, reference to condition and necessary permissions for use and occupation and other details are given in good faith and are believed to be correct but any intending purchasers or lessees should not rely on them as statements or representation of fact but satisfy themselves by inspection or otherwise as to the correctness of each of them. 4. No person in the employment of Cooper Green Pooks has any authority to make or give any representation or warranty whatsoever in relation to this property. 5. All rentals and prices are quoted exclusive of Stamp Duty, legal and surveyors fees and any other associated purchasers or lessees costs. 6. Floor plans are indicative only and should not be relied on. 7. The plan showing the boundary of the property is indicative only and has not been checked against the legal title so should not be relied on. 8. All dimensions, floor areas and site areas are only approximate and should not be relied on. Dimensions are generally maximum room dimension.