



4, Undercastle Close, Ruyton XI Towns, Shrewsbury, SY4 1NH
£1,600 Per Month



4, Undercastle Close, Ruyton XI Towns, Shrewsbury, SY4 1NH

£1,600 Per Month

VIRTUAL TOUR AVAILABLE - Recently built development of 5 detached dwellings, each finished to a high standard throughout. This four bedroom detached house offers spacious and well-thought through living accommodation, positioned in the heart of the popular village Ruyton XI Towns offering excellent access to Oswestry and Cheshire whilst being located just 13 miles from Shrewsbury.

Available: 03/05/25

Description

Comprising: Entrance hall, cloakroom, under-stairs storage, living room, open plan day room including kitchen with integrated Bosch 5-ring hob, dishwasher, double oven and fridge/freezer, solid kitchen worktops, cloaks cupboard, utility with space for washing machine and dryer. Stairs to first floor landing, four double bedrooms with built-in wardrobes to master, en-suite shower room, family bathroom. Front and rear gardens. Gas central heating. Double glazing. Driveway parking. EPC B



Unfurnished

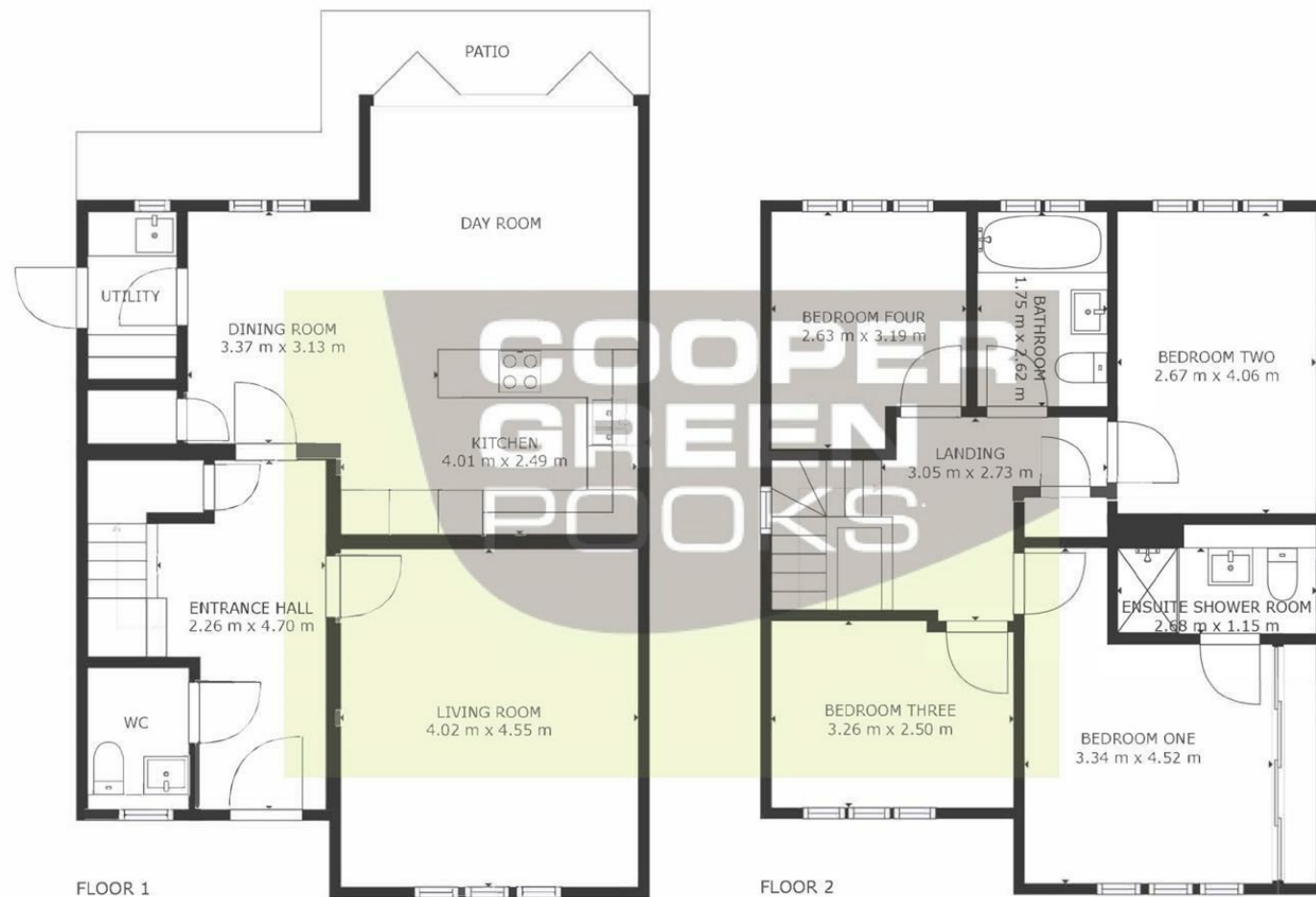
Council Tax Band: D

Available: 3rd May 2025

EPC: B



Floor Plans



GROSS INTERNAL AREA
FLOOR 1: 57 m², FLOOR 2: 62 m²
TOTAL: 120 m²
SIZES AND DIMENSIONS ARE APPROXIMATE, ACTUAL MAY VARY.



These particulars, whilst believed to be accurate are set out as a general outline only for guidance and do not constitute any part of an offer or contract. Intending purchasers should not rely on them as statements of representation of fact, but must satisfy themselves by inspection or otherwise as to their accuracy. No person in this firm's employment has the authority to make or give any representation or warranty in respect of the property.