

The Meadows, Little Stretton, Ludlow Road, Shrewsbury, SY6 6RE  
£1,600 Per Month





The Meadows, Little Stretton, Ludlow Road, Shrewsbury, SY6 6RE

**£1,600 Per Month**

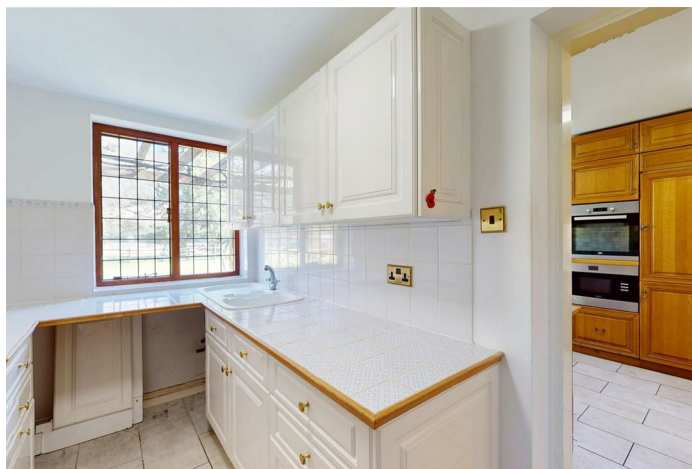
VIRTUAL TOUR AVAILABLE - A beautifully situated, very spacious and private three bedroom detached family house with double garage and a wealth of outside space, nestled within the popular village of Little Stretton at the foot of the Shropshire Hills with views of Ragleth from the rear and the Long Mynd to the front.

Available from: 03/05/25



## Description

Comprising: Spacious entrance hall, WC, front to back living room with patio doors to veranda, dining area, kitchen with dishwasher and built-in oven, hob, microwave and fridge/freezer, utility with appliance space, utility room with oil boiler and dryer. Stairs to first floor landing, three spacious bedrooms, bathroom, store cupboard off bathroom. Front and rear gardens. Double garage with driveway. Oil central heating. EPC E



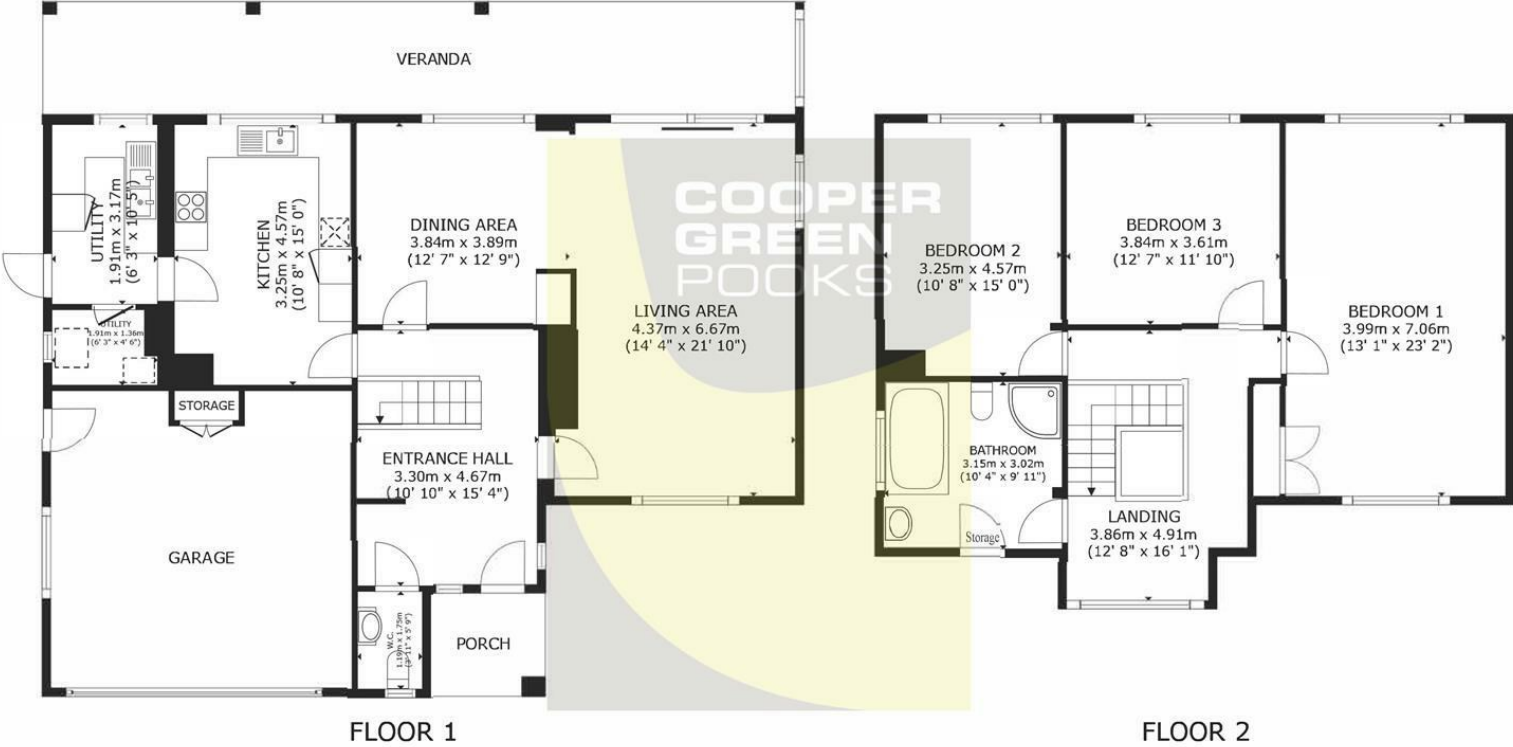
Unfurnished

Council Tax Band: F

Available: 3rd May 2025

EPC: E

Floor Plans



GROSS INTERNAL AREA  
FLOOR 1 89.1 m<sup>2</sup> (959 sq.ft.) FLOOR 2 84.6 m<sup>2</sup> (910 sq.ft.)  
EXCLUDED AREAS : VERANDA 28.1 m<sup>2</sup> (302 sq.ft.) PORCH 3.9 m<sup>2</sup> (42 sq.ft.) GARAGE 28.4 m<sup>2</sup> (306 sq.ft.)  
TOTAL : 173.7 m<sup>2</sup> (1,870 sq.ft.)  
SIZES AND DIMENSIONS ARE APPROXIMATE, ACTUAL MAY VARY.



These particulars, whilst believed to be accurate are set out as a general outline only for guidance and do not constitute any part of an offer or contract. Intending purchasers should not rely on them as statements of representation of fact, but must satisfy themselves by inspection or otherwise as to their accuracy. No person in this firms employment has the authority to make or give any representation or warranty in respect of the property.