



**Fyrish, the Common, Bomere Heath, Shrewsbury, SY4 3LY**

3 bedroom detached house—£400,000 Freehold



# Fyrish, The Common, Bomere Heath, Shrewsbury, SY4 3LY

Coopergreenpooks.co.uk

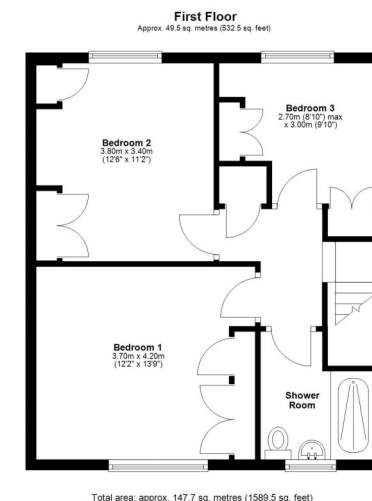
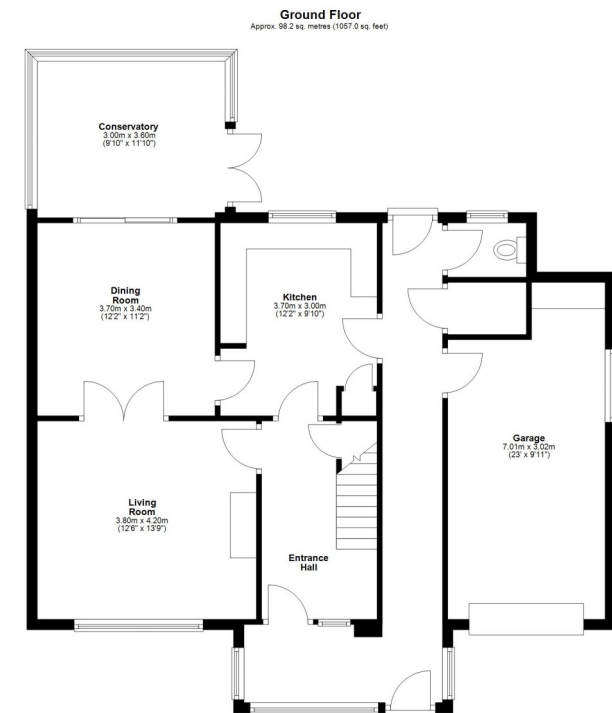
£400,000 Freehold—3 bedroom detached house

sales@cgpooks.co.uk

Occupying a fantastic position with stunning views over open fields and surrounding countryside, this traditional detached family house offers well-proportioned accommodation with plenty of potential, benefitting from a good-sized plot, driveway parking and garage.

## KEY FEATURES

- Entrance porch with access to both the rear garden and inner hallway, which has useful storage and a turning staircase to landing
- Living room with feature fireplace and large window to front
- Separate dining room opening onto the conservatory
- Kitchen with a range of fitted units, storage and space for appliances
- The very practical side hall connects to the garden, WC, cloakroom, kitchen and integral garage, as well as the front porch
- On the first floor are three bedrooms with built in wardrobes and a family shower room
- uPVC double glazed windows and gas fired central heating
- Beautiful private rear garden adjoining open fields, laid to lawn with paved terraces, timber store and greenhouse
- Gated driveway to front providing parking and access to the large attached garage
- This property has been well-maintained over the years, while offering plenty of potential for modernisation and extension
- Quietly and conveniently located in a lovely setting, just a few minutes' walk from excellent village amenities such as a local store, pub, primary school, tennis and cricket clubs. The property is also within the catchment of the Corbet secondary school and just a 10-minute drive from Shrewsbury
- Sold with no upward chain



Total area: approx. 147.7 sq. metres (1589.5 sq. feet)



















## Fyrish, The Common, Bomere Heath, Shrewsbury, SY4 3LY

Coopergreenpooks.co.uk

£400,000 Freehold—3 bedroom detached house

[sales@cgpooks.co.uk](mailto:sales@cgpooks.co.uk)



Cooper Green Pooks  
3 Barker Street  
Shrewsbury  
SY1 1QF

[www.cgpooks.co.uk](http://www.cgpooks.co.uk)  
[sales@cgpooks.co.uk](mailto:sales@cgpooks.co.uk)

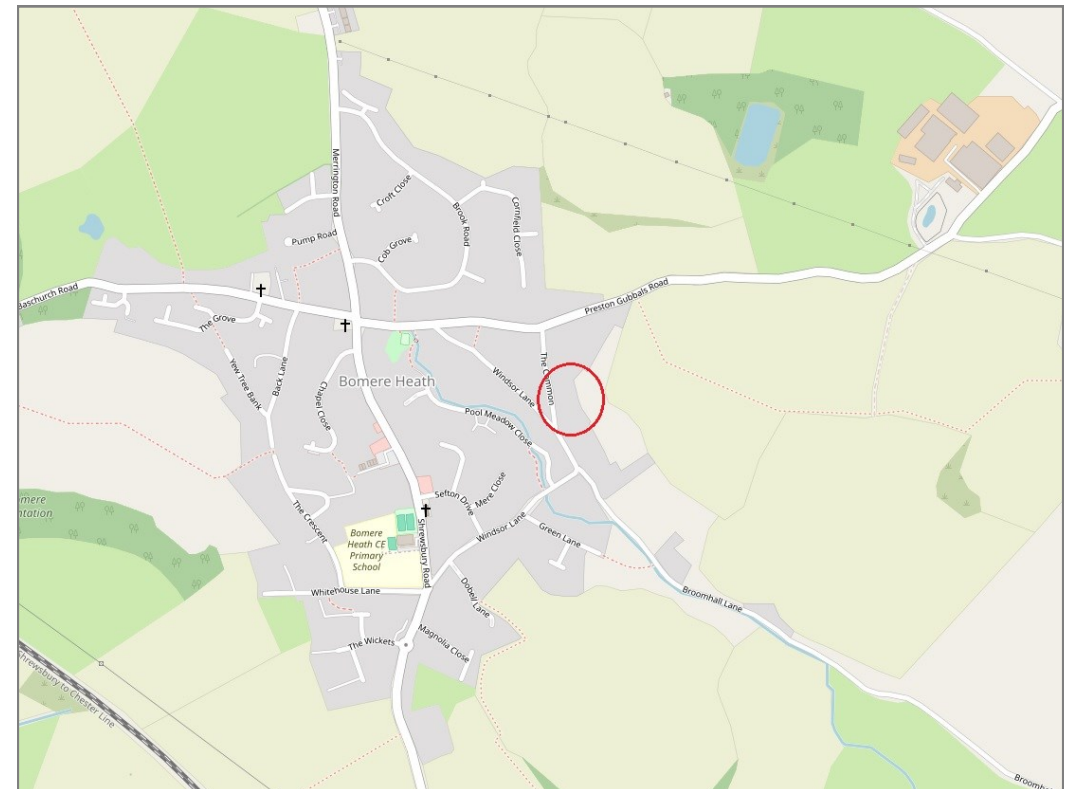




# Fyrish, The Common, Bomere Heath, Shrewsbury SY4 3LY

£400,000 Freehold—3 bedroom detached house

sales@cgpooks.co.uk



**BOUNDARIES NOT CONFIRMED**

Tenure	Freehold
Local Authority	Shropshire Council
Council Tax	Band C
EPC Band	TBC
Services	All mains services are connected

**Expert mortgage advice available**  
3 Barker St, Shrewsbury SY1 1QF  
**Cooper Green Pooks**  
**01743 276666**



Your home may be repossessed if you do not keep up repayments on your mortgage.  
There may be a fee for mortgage advice. The actual amount you pay will depend upon your circumstances. The fee is up to 1% but a typical fee is 0.3% of the amount borrowed.

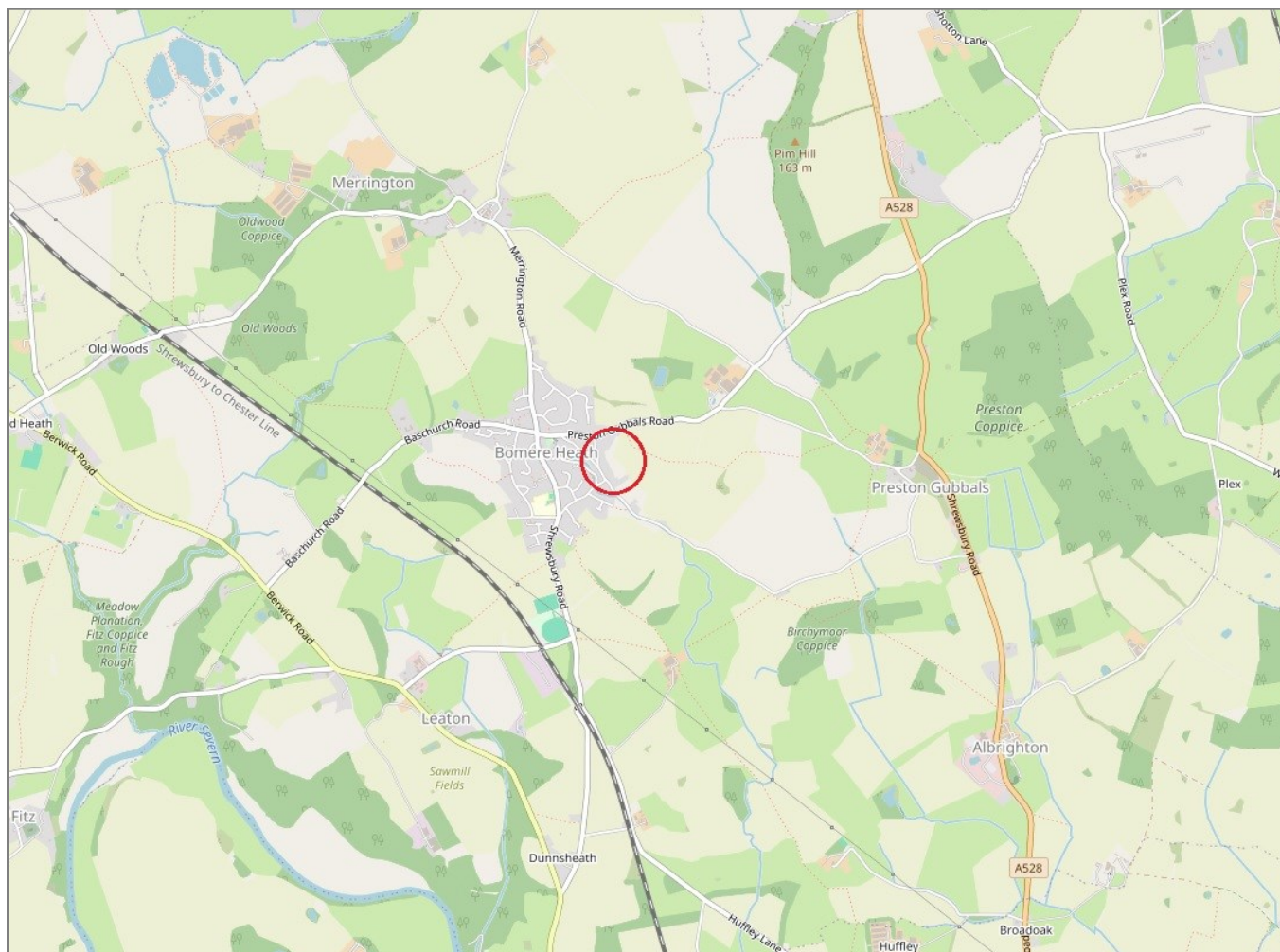


# Fyrish, The Common, Bomere Heath, Shrewsbury, SY4 3LY

Coopergreenpooks.co.uk

£400,000 Freehold—3 bedroom detached house

sales@cgpooks.co.uk



**IMPORTANT NOTICE:** Cooper Green Pooks for themselves and for the lessors or vendors of this property whose agents they are give notice that: 1 No appliances, services or service installations have been tested and no warranty as to suitability or serviceability is implied. Any prospective purchaser or lessee is advised to obtain verification from their surveyor or solicitor. 2. The particulars are set out as a general outline only for the guidance of the intended purchasers or lessees and do not constitute, nor constitute part of, an offer or contract. 3. All descriptions, reference to condition and necessary permissions for use and occupation and other details are given in good faith and are believed to be correct but any intending purchasers or lessees should not rely on them as statements or representation of fact but satisfy themselves by inspection or otherwise as to the correctness of each of them. 4. No person in the employment of Cooper Green Pooks has any authority to make or give any representation or warranty whatsoever in relation to this property. 5. All rentals and prices are quoted exclusive of Stamp Duty, legal and surveyors fees and any other associated purchasers or lessees costs. 6. Floor plans are indicative only and should not be relied on. 7. The plan showing the boundary of the property is indicative only and has not been checked against the legal title so should not be relied on. 8. All dimensions, floor areas and site areas are only approximate and should not be relied on. Dimensions are generally maximum room dimension.