



12, Everley Close, Redwood Park, Shrewsbury, SY3 5PN
£825 Per Month



12, Everley Close, Redwood Park, Shrewsbury, SY3 5PN

£825 Per Month

VIRTUAL TOUR AVAILABLE: Well presented and extended two bedroom modern mid terraced house, well situated at the end of a quiet and private cul de sac, in this popular area of Shrewsbury next to Royal Shrewsbury Hospital. Includes parking for two cars.

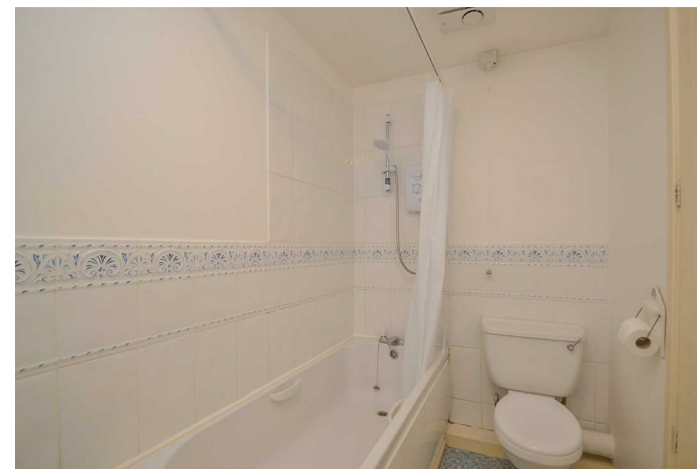
Available: 23/04/25

Description

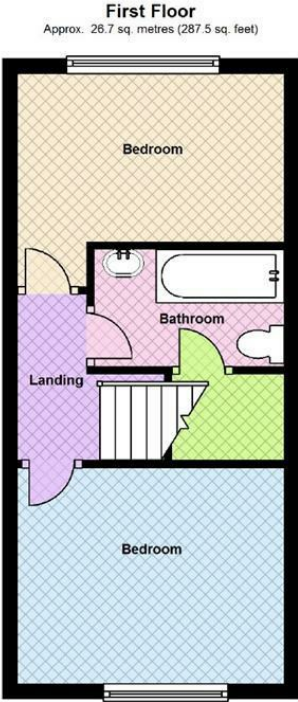
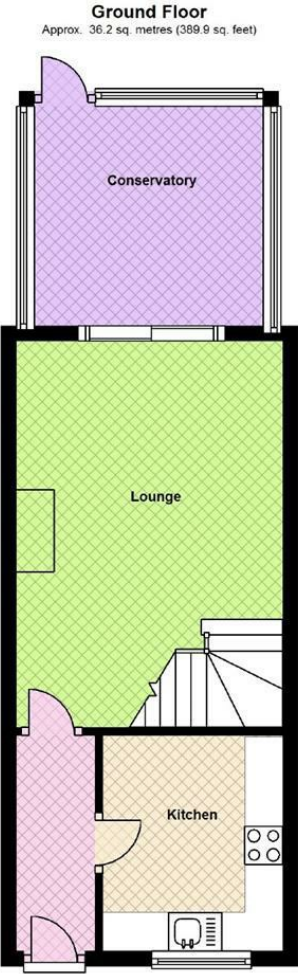
Entrance hall, good sized living room, conservatory, kitchen including oven & gas hob, two double bedrooms, bathroom including shower, private parking for two cars, low maintenance rear garden, double glazed windows, gas fired central heating. EPC C



Unfurnished
Council Tax Band: B
Available: 23rd April 2025
EPC: C



Floor Plans



Total area: approx. 62.9 sq. metres (677.4 sq. feet)

We accept no responsibility for any mistake or inaccuracy contained within the floorplan. The floorplan is provided as a guide only and should be taken as an illustration only. The measurements, contents and positioning are approximations only and provided as a guidance tool and not an exact replication of the property.
Plan produced using The Mobile Agent.

These particulars, whilst believed to be accurate are set out as a general outline only for guidance and do not constitute any part of an offer or contract. Intending purchasers should not rely on them as statements of representation of fact, but must satisfy themselves by inspection or otherwise as to their accuracy. No person in this firms employment has the authority to make or give any representation or warranty in respect of the property.