

17 Sandringham Court, Porthill, Shrewsbury, SY3 8LL
2 bedroom second floor apartment — £350,000 Leasehold with a share of the freehold

17 Sandringham Court, Porthill, Shrewsbury, SY3 8LL

Coopergreenpooks.co.uk

£350,000 Leasehold with a share of the freehold — 2 bedroom second floor apartment
sales@cgpooks.co.uk

An impressive, well-presented, and improved second floor apartment with lift access, occupying a fantastic position overlooking the beautiful communal grounds of this highly sought after development, a stone's throw from the Quarry Park and town centre.

KEY FEATURES

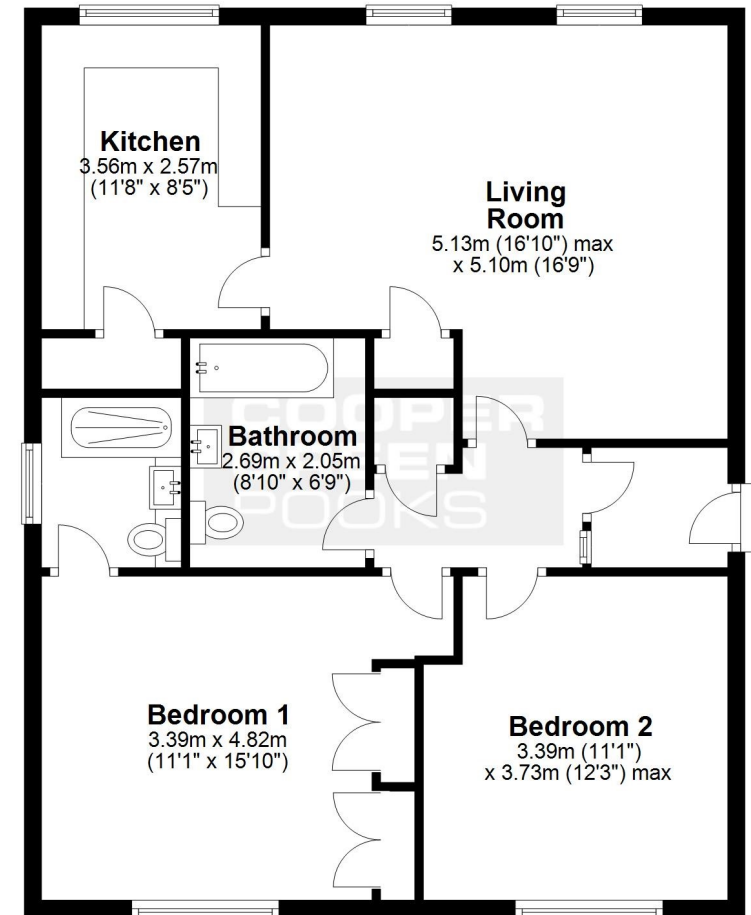
- Immaculately presented and spacious interior with lovely views to both the front and rear
- Open plan living/dining room with adjoining kitchen which has been fitted to a high standard, complete with integrated appliances and large useful store
- Two good sized double bedrooms with lovely views over communal gardens
- Modern and tastefully fitted bathroom and en-suite shower room to bedroom one
- Lift access to landing (shared with 1 other property) and private inner entrance hall
- Residents and guest parking
- Set in superb landscaped grounds, with water features and multiple seating areas
- Private pathway leading directly to Porthill footbridge, the River Severn, Quarry Park and town centre
- Sold with no upward chain

Cooper Green Pooks
3 Barker Street
Shrewsbury
SY1 1QF

www.cgpooks.co.uk
sales@cgpooks.co.uk
01743 276666



Second Floor



We accept no responsibility for any mistake or inaccuracy contained within the floorplan. The floorplan is provided as a guide only and should be taken as an illustration only. The measurements, contents and positioning are approximations only and provided as a guidance tool and not an exact replication of the property.

Plan produced using PlanUp.

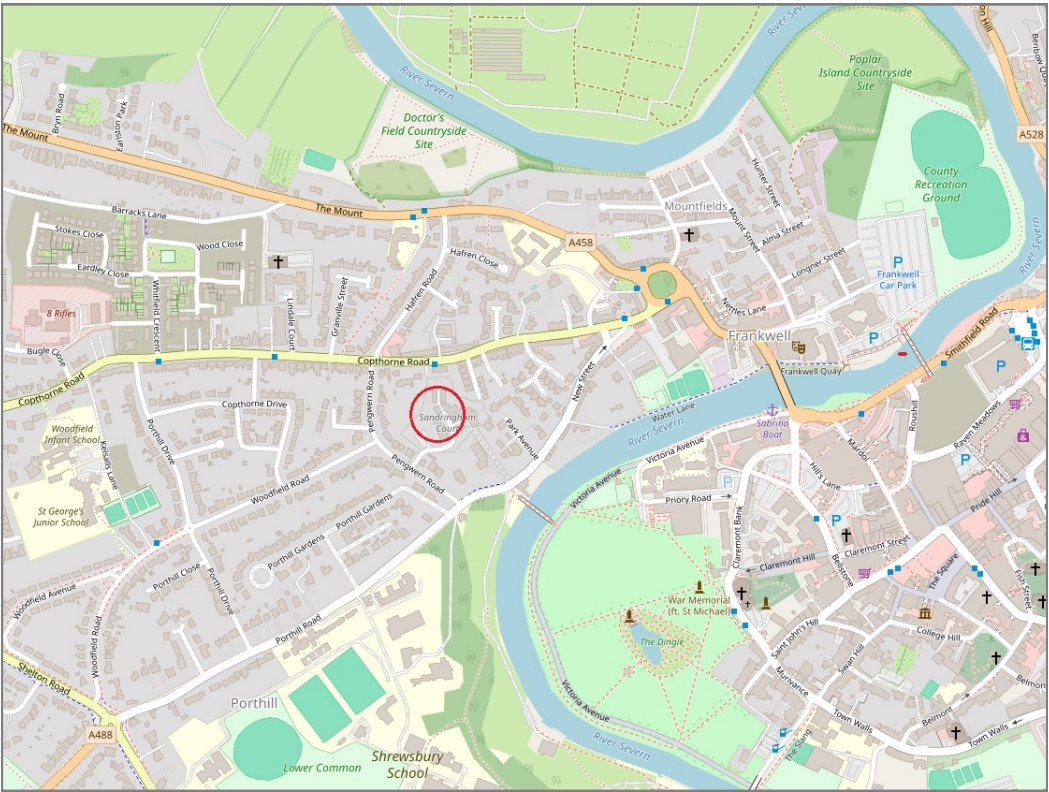






17 Sandringham Court, Porthill, Shrewsbury, SY3 8LL

£350,000 Leasehold with a share of the freehold —2 bedroom second floor apartment



BOUNDARIES NOT CONFIRMED

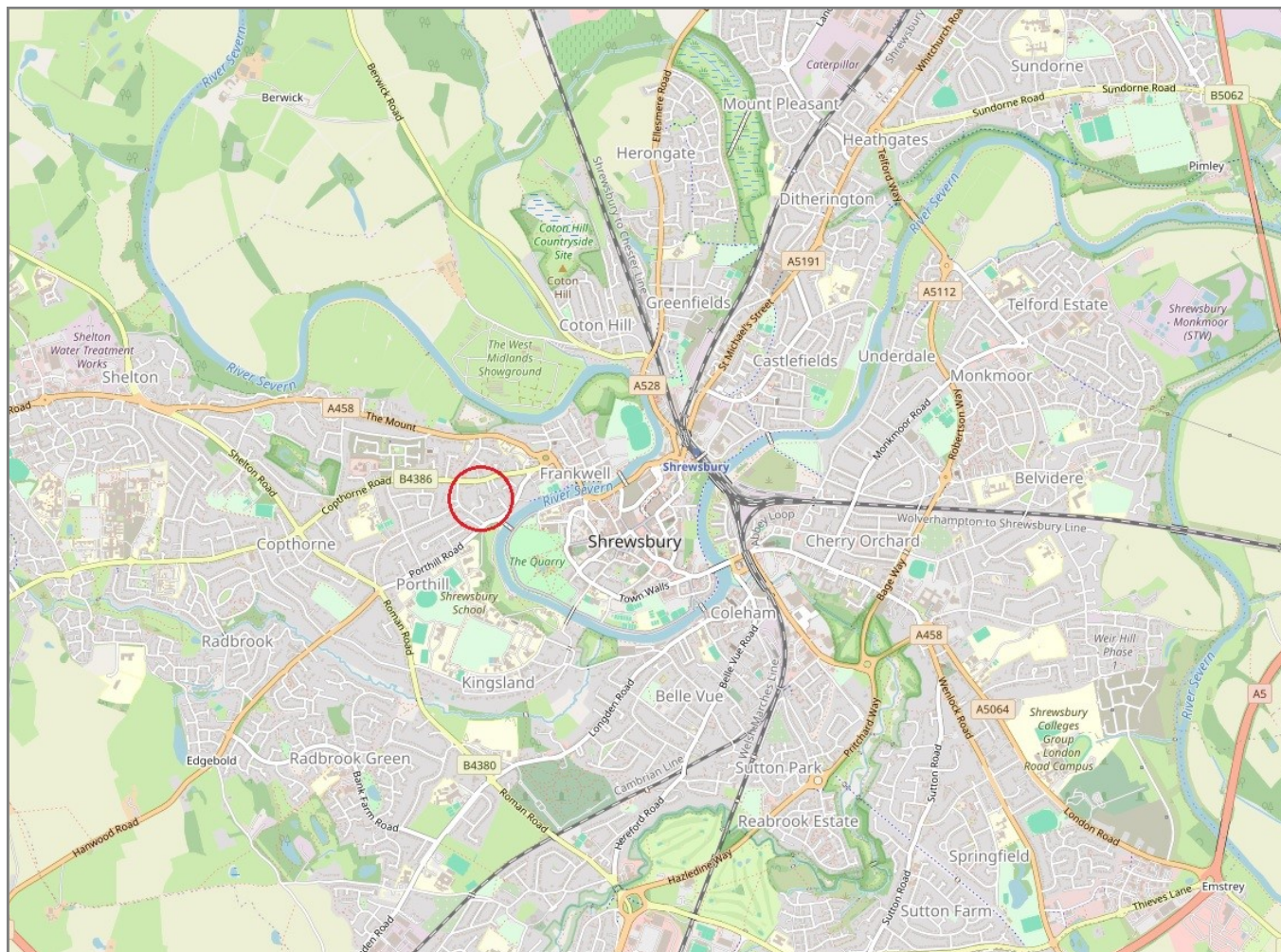
Tenure	Leasehold with a share of the freehold
Lease Length	199 years from 1990
Service Charge	£3,637.96 PA

Local Authority	Shropshire Council
Council Tax	Band E
EPC Band	Band D
Services	Mains electricity, water and drainage are connected
	Heating is electric

17 Sandringham Court, Porthill, Shrewsbury, SY3 8LL

Coopergreenpooks.co.uk

£350,000 Leasehold with a share of the freehold —2 bedroom second floor apartment



IMPORTANT NOTICE: Cooper Green Pooks for themselves and for the lessors or vendors of this property whose agents they are give notice that: 1 No appliances, services or service installations have been tested and no warranty as to suitability or serviceability is implied. Any prospective purchaser or lessee is advised to obtain verification from their surveyor or solicitor. 2. The particulars are set out as a general outline only for the guidance of the intended purchasers or lessees and do not constitute, nor constitute part of, an offer or contract. 3. All descriptions, reference to condition and necessary permissions for use and occupation and other details are given in good faith and are believed to be correct but any intending purchasers or lessees should not rely on them as statements or representation of fact but satisfy themselves by inspection or otherwise as to the correctness of each of them. 4. No person in the employment of Cooper Green Pooks has any authority to make or give any representation or warranty whatsoever in relation to this property. 5. All rentals and prices are quoted exclusive of Stamp Duty, legal and surveyors fees and any other associated purchasers or lessees costs. 6. Floor plans are indicative only and should not be relied on. 7. The plan showing the boundary of the property is indicative only and has not been checked against the legal title so should not be relied on. 8. All dimensions, floor areas and site areas are only approximate and should not be relied on. Dimensions are generally maximum room dimension.